

CITATAH

2022
CATALOG

GLASS
MOSAIC



BISAZZA

© Copyright 2021 Citatah

All rights reserved. No part of this publication may be reproduced, distributed or transmitted in any form or by any means, including photocopying, scanning or other electronic or mechanical methods, without the prior written permission of the publisher, except where noted.

Published January 2021, color of glass mosaic in this publication may vary slightly due to the printing process, desktop, and mobile preview. Final color selection should be made from stone samples.

The detailed information in this publication may be modified or updated without prior notice.

BISAZZA

MOSAICO

CONTENTS

06 - 07
BISAZZA

08 - 09
WHY BISAZZA

10 - 37
QUALITY

38 - 43
INNOVATION & COLLABORATIONS

44 - 63
PROJECTS

64 - 85
COLLECTIONS

86 - 87
CONTACT US

BISAZZA

One of the top Italian luxury brand in the design sector and the industry's leading producer of glass mosaic for interior and exterior decoration.

As Bisazza's exclusive distributor in Indonesia, since 2011, Citatah offers the whole range of Bisazza's mosaics, including the wide collections of signature decorative patterns and mosaic tiles series, from Vetricolor to Le Gemme, from Gloss to Oro. A glistening, glitzy range of mosaic tiles, perfect for bathrooms, pools and spas - or anywhere in need of flair.

The best of Italy's Glass Mosaics is available for all in Indonesia.



Menara Prima, Citatah Showroom, Jakarta

WHY BISAZZA

Originally founded in 1956, making Bisazza the oldest and most experienced industrial manufacturer of glass mosaic tiles in Europe (reputation).

Bisazza is one of the top luxury brands in the design sector and the industry's leading producer of glass mosaics for interior and exterior decoration. The company's distribution network currently includes 4 flagship stores in London, Milan, New York and Paris and 2,800 local retailers around the world.

For more than twenty-five years the company has been working with internationally renowned designers, becoming a reference point in the world of design.

LUXURY

Since 2005 Bisazza has been part of Altagamma, an association of Italian companies operating at the highest end of the market, whether in the fields of design, fashion, cuisine, jewelry, catering and hospitality, like BVLGARI, Ferrari, Emilio Pucci, Salvatore Ferragamo, Versace among many others.



QUALITY

Natural pigments are blended ensuring homogenous colouring of the tile, with colour and shading present through 100% of the tile. All Bisazza Glass Mosaic tiles are tempered increasing strength, and splinter-free emphasizing priority of customer safety.

Bisazza's patented manufacturing process and relentless appetite for perfection ensures only the highest quality tiles are created.

Colour palette of Bisazza's collections are conceived, designed, and developed together with world renowned artists and designer. Crystal Clear transparent white glass eliminates any traces which affect purity of the tile's colour, while enhancing brightness. The perfect balance of strength and elegance which will brighten any space,

WHY BISAZZA



Pebbles by Marcel Wanders

WHY BISAZZA

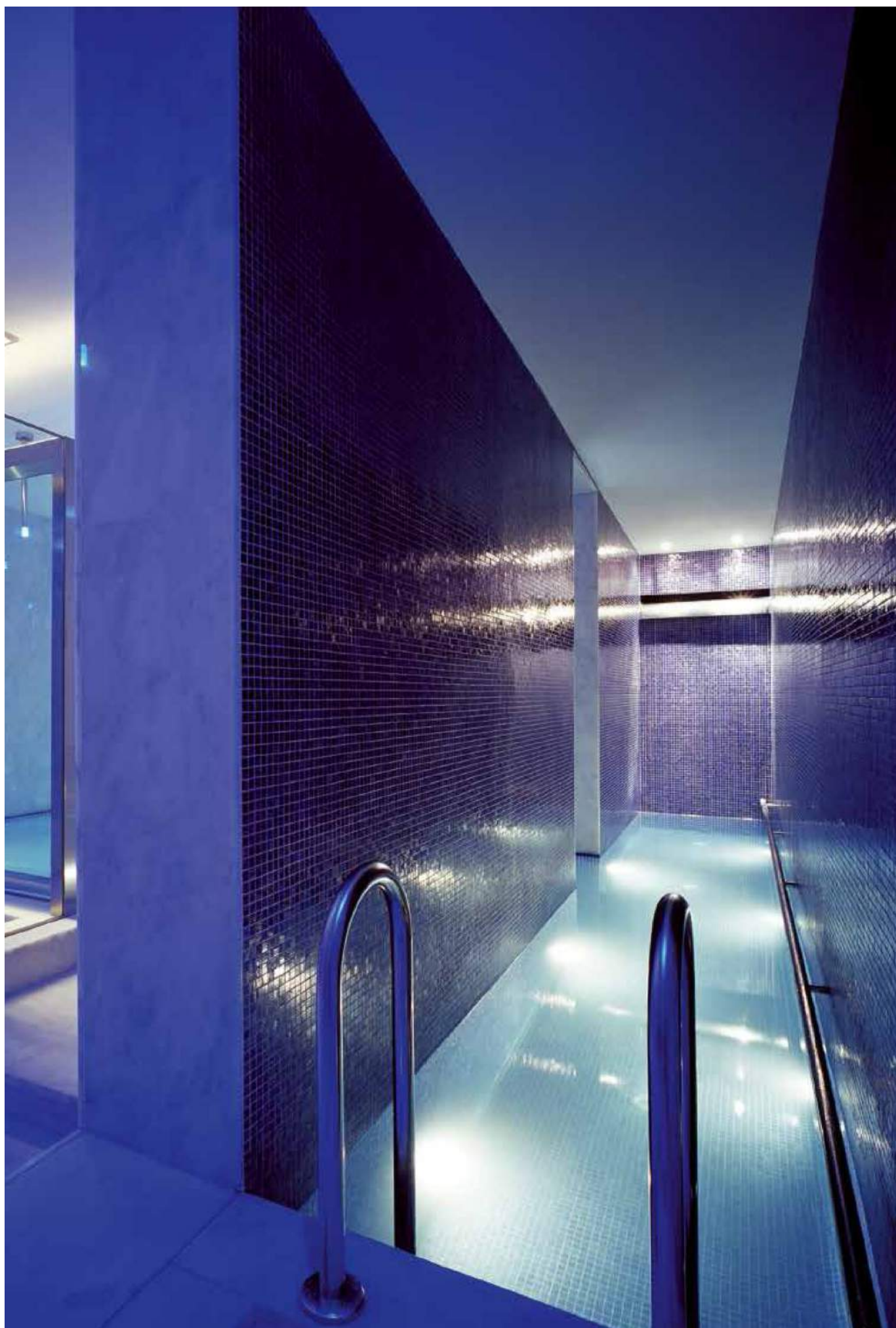
QUALITY

SMALTO

The smalto (SM) collection is made by adding coloured enamel grit to the molten glass.

Glass mosaic, consisting of 20x20mm. (3/4"x3/4") and 10x10 mm. (3/8"x3/8") bevelled square tiles, mounted on paper or on a mesh, according to the item and format (10x10 mm only on paper).





Hotel Aleph, Roma, design Adam Tihany

WHY BISAZZA

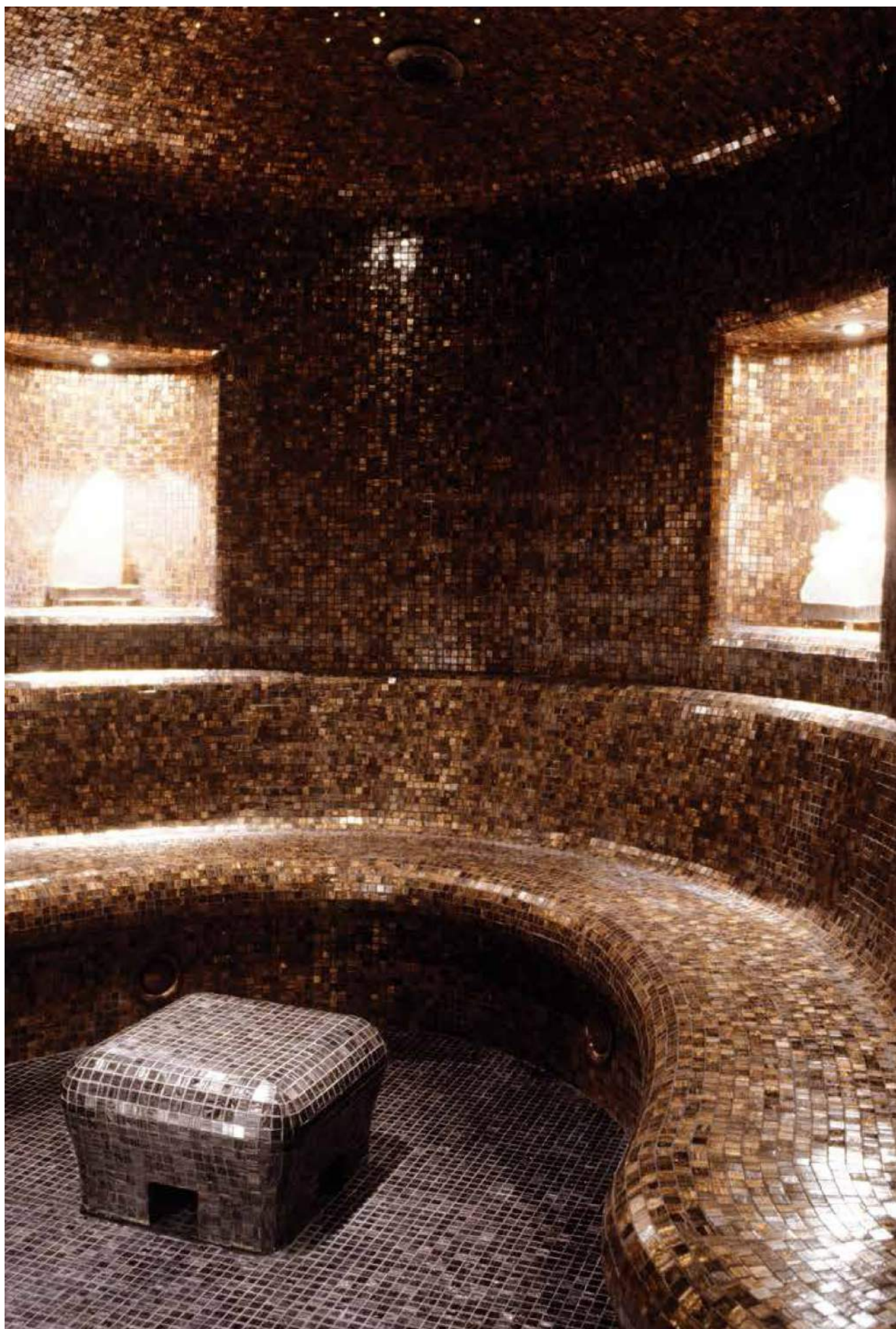
QUALITY

LA GEMME

La Gemme (GM) substitutes the oxides used in the Gloss lines with a material known as Avventurina whose brown glow adds a unique touch to each of these hand mixed tiles.

Glass mosaic, consisting of 20x20mm. (3/4"x3/4") and 10x10 mm. (3/8"x3/8") bevelled square tiles, mounted on paper or on a mesh, according to the item and format (10x10 mm only on paper).





WHY BISAZZA

QUALITY

GLOSS

The Gloss line of tiles follow the exact same manufacturing process, with the addition of high-quality oxides to add an extra sheen to each tile which will stand against the trials of time and temperature.

Glass mosaic with an iridescent surface, consisting of 20x20mm (3/4"x3/4") bevelled square tiles mounted on paper or on mesh.





Hotel Barcelo Malaga, design Jordi Torres GL 10

WHY BISAZZA

QUALITY

GLOW

Glass mosaic with undulating an iridescent surface, consisting of 20x20mm (3/4"x3/4") bevelled square tiles mounted on paper or on mesh





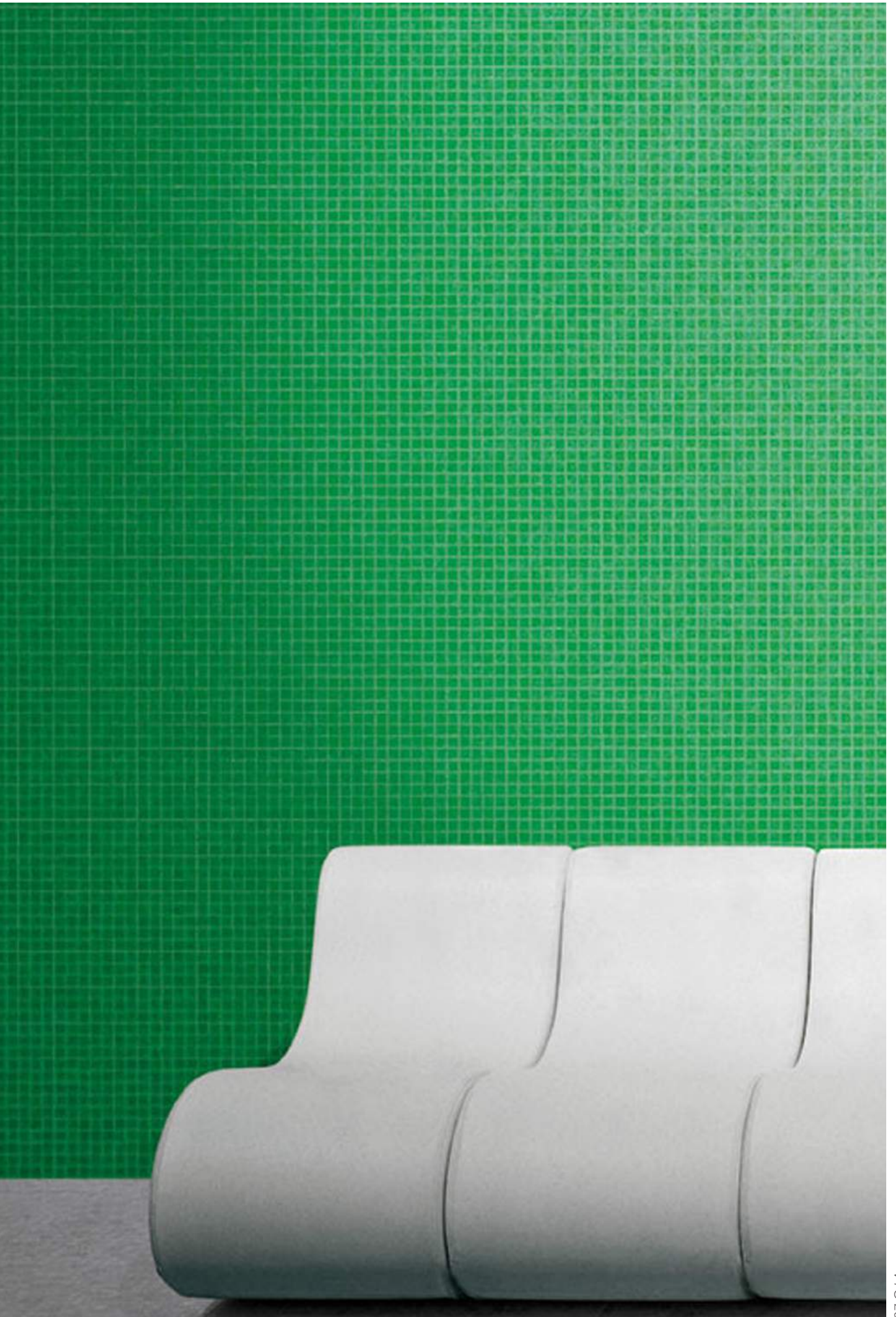
QUALITY

VETRICOLOR

Vetricolor, is Bisazza's main line of glass mosaic tiles, are as bright and colourful as they are abundant in range. Using only select high-quality ingredients and a patented manufacturing process Vetricolor tiles will maintain their colours over extended periods.

Glass mosaic, consisting of 20x20mm. (3/4"x3/4") and 10x10 mm. (3/8"x3/8") bevelled square tiles, mounted on paper or on a mesh, according to the item and format (10x10 mm only on paper).





WHY BISAZZA

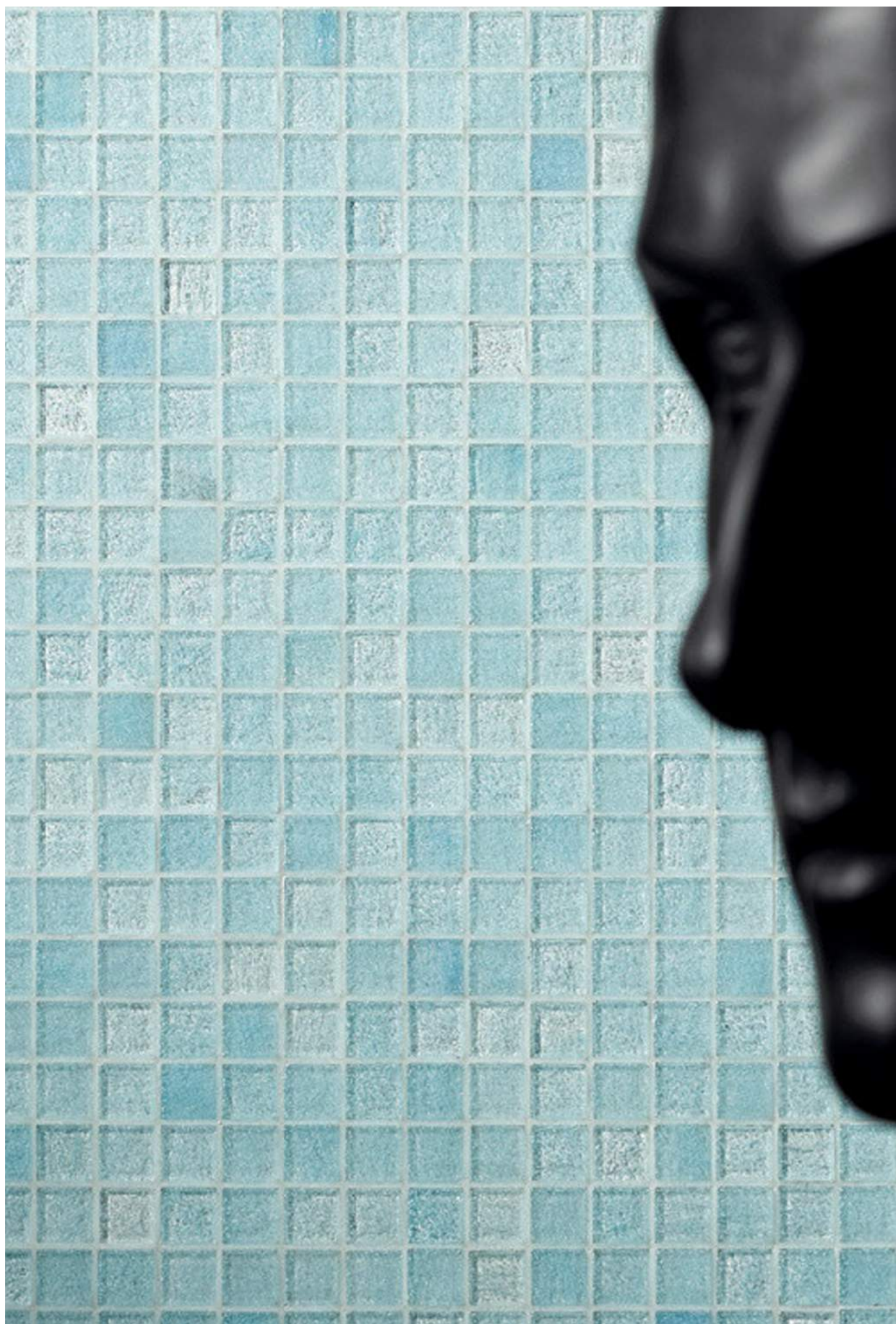
QUALITY

CANVAS

lass mosaic, consisting of 20x20mm (3/4"x3/4") bevelled square tiles mounted on paper.

The CANVAS collection consists of 18 colours, and is achieved by adding to the transparent glass a coloured powder that melts only partially, with the effect of a non-uniform colour distribution.





WHY BISAZZA

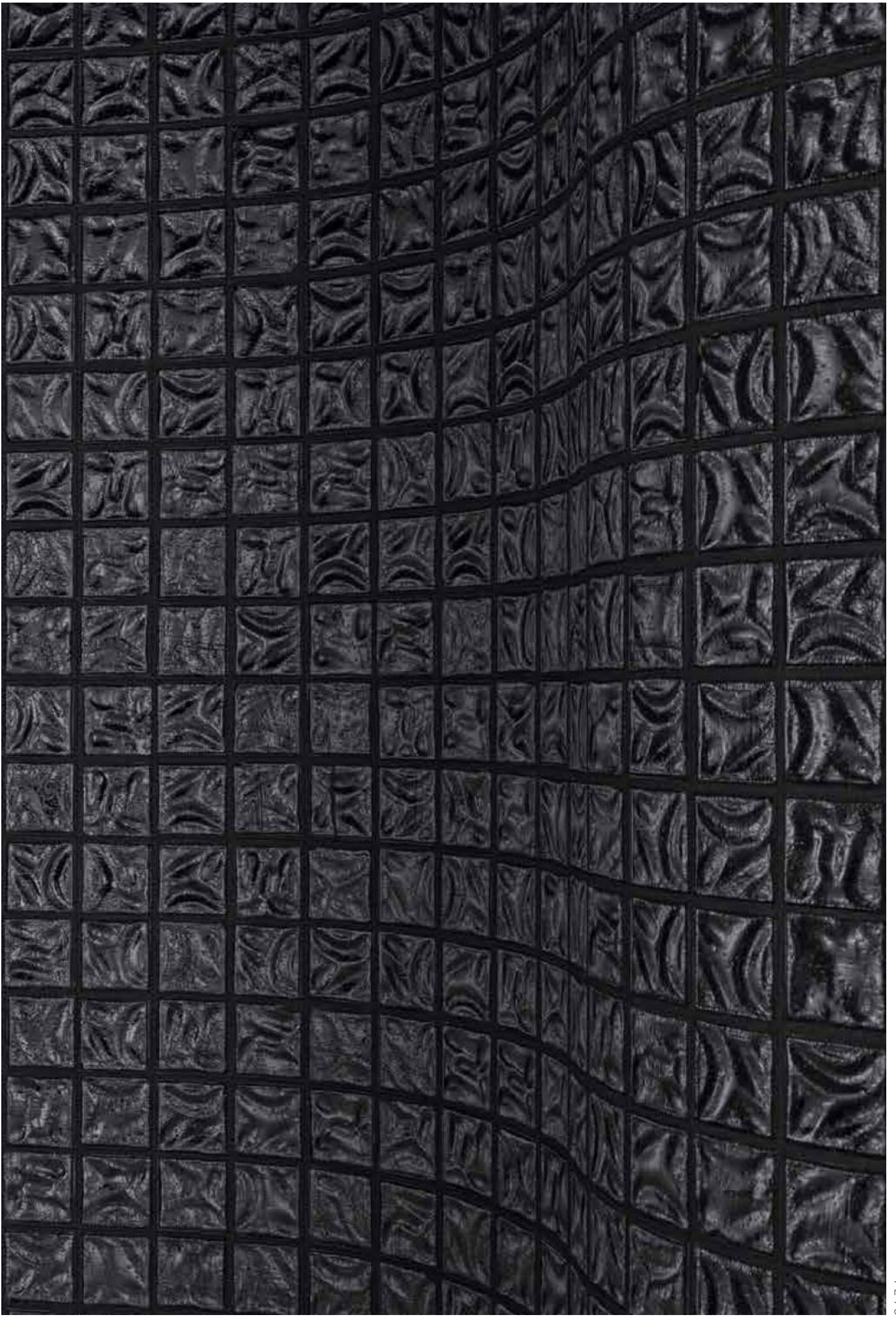
QUALITY

FLOW

Glass mosaic, consisting of 20x20mm (3/4"x3/4") bevelled square tiles with undulating surface mounted on paper.

The FLOW collection consists of 12 colours. Also available in the MATT version: classes A+B+C as defined by DIN 51097 (wet-loaded barefoot areas).





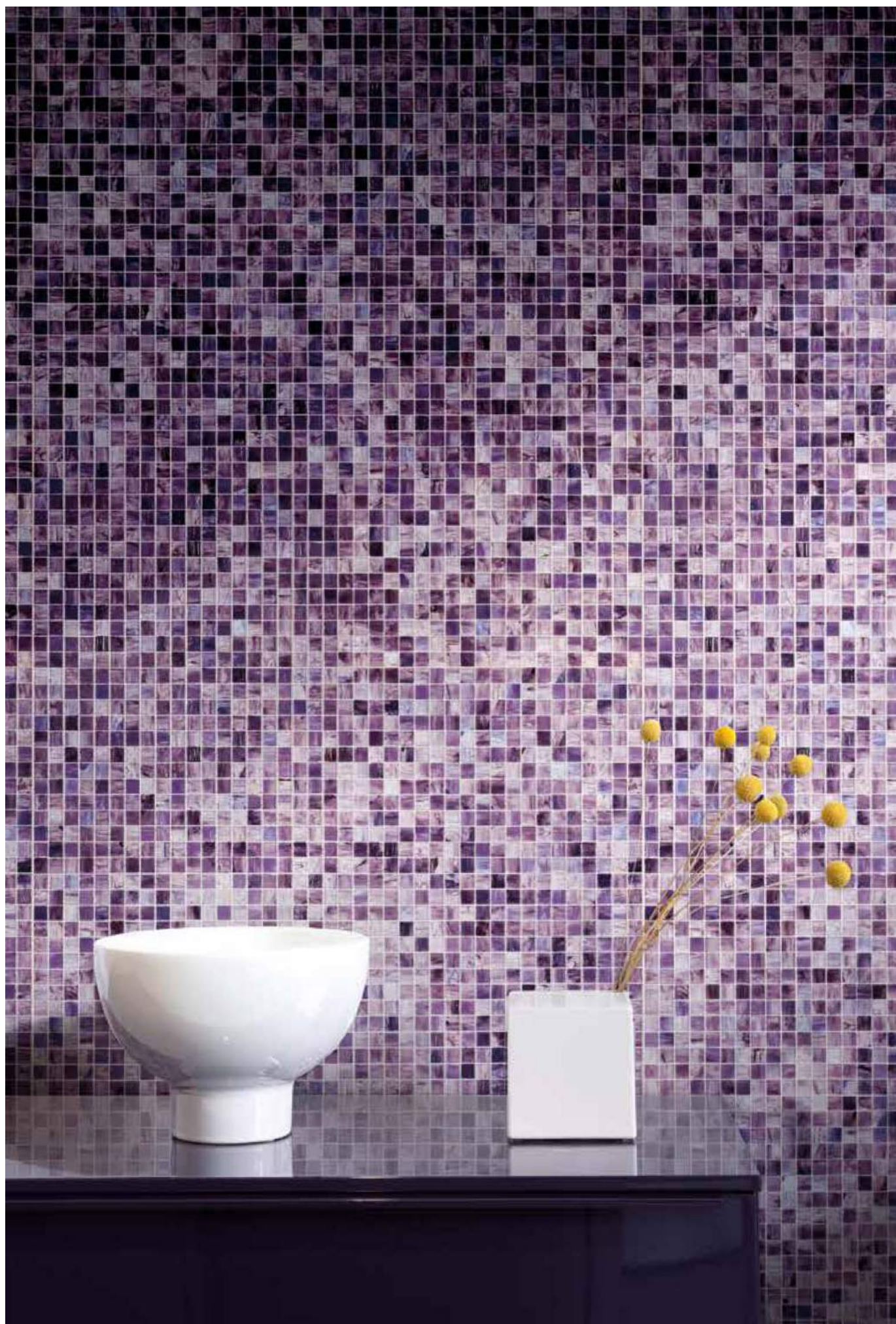
WHY BISAZZA

QUALITY

OPERA

Transparent glass mosaic, consisting of 15x15mm (19/32"x19/32") and 25x25mm (63/64"x63/64") square tiles 6 mm (+/-1 mm) thick, mounted on sheets of paper.





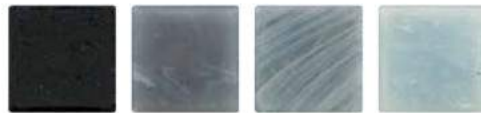
WHY BISAZZA

QUALITY

VELOURS

Glass and enamel mosaic with matt surface, of square and bevelled tesserae, facial dimensions 20x20 mm (3/4"x3/4"), with a thickness of 4 mm (5/32"). It is paper face mounted or back mounted on mesh.

The Velours collection is made by adding coloured enamel grit to the molten glass, like the Smalto (SM) collection.



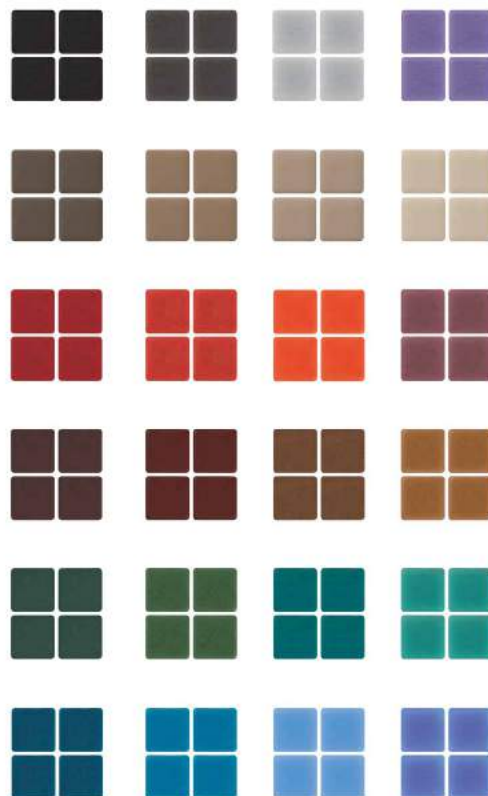


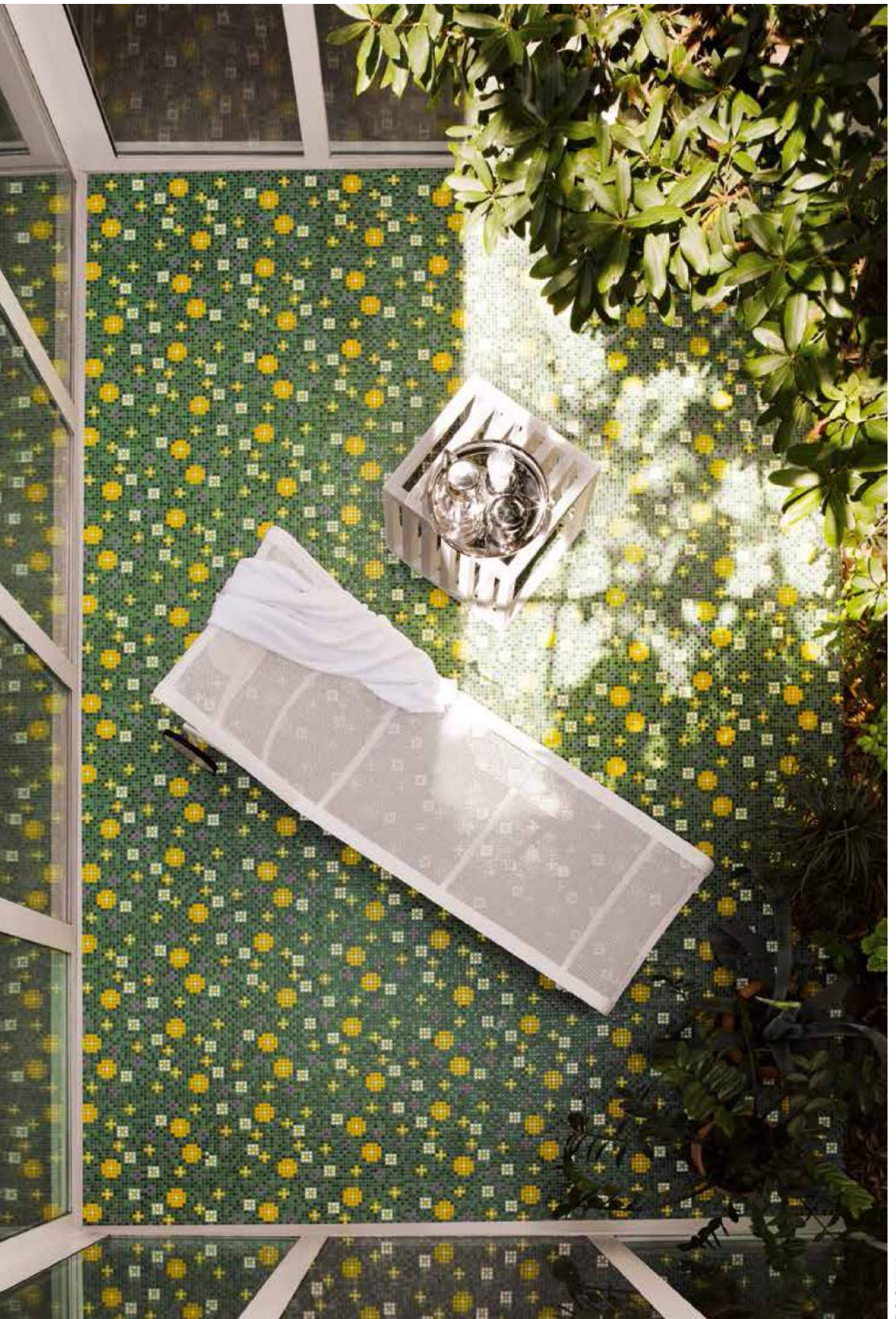
QUALITY

OPUS ROMANO

Opus Romano, are tiles which employ Venetian enamel dying techniques in their manufacturing process, they also offer the Matt range for your matte needs while still remaining stylish.

Sintered glass enamel mosaic of square tesserae, facial dimension of 12x12 mm (1/2" x 1/2"), with a thickness of 4 mm (5/32"), mounted on sheets of paper.





WHY BISAZZA

QUALITY

ORO BIS

The Oro Bis mosaic is produced in 20x20 mm (3/4"x3/4") and 10x10 mm (3/8"x3/8") sizes with 4 mm (5/32") thickness. The tiles are bevelled like those of all the other collections of the same size, which makes the Oro Bis tiles compatible in size and thickness with the Bisazza glass mosaic collections, allowing use in blends, shading blends and decors, thus facilitating installation.

The tiles are constituted by a leaf of 24 kt gold sandwiched between two protective layers of glass. Oro Bis is available in wall and floor versions (the latter only in the 20x20 mm size), with smooth or undulating surface in yellow or white.





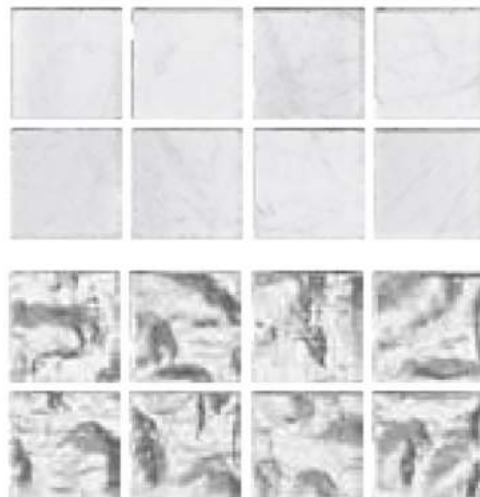
WHY BISAZZA

QUALITY

PLATINO

The Platino mosaic (Platinum) is produced in 20x20 mm (3/4"x-3/4") and 10x10 mm (3/8"x3/8") sizes with 4 mm (5/32") thickness. The tiles are bevelled like those of all the other collections of the same size, which makes the Platino tiles compatible in size and thickness with the Bisazza glass mosaic collections, allowing use in blends, shading blends and decors, thus facilitating installation.

The tiles are constituted by a leaf of 100% platinum sandwiched between two protective layers of glass. Platino is available in wall version only, with smooth or wavy surface.





WHY BISAZZA

QUALITY

Flexible, and resilient Bisazza glass tiles are the preferred choice for outdoor domes such as Mosques. The Asma Mosque Al Khuwair in Muscat, Oman, National Mosque in Brunei, and Masjid Kubah Emas in Jakarta, Indonesia, amongst many others, are testimonies to the beauty and hardness of Bisazza. Waterproof, Bisazza tiles make the perfect selection for swimming pools, indoor or outdoor

Asma Mosque, Al Khuwair, Muscat, Oman





Asma Mosque, Al Khuwair, Muscat, Oman

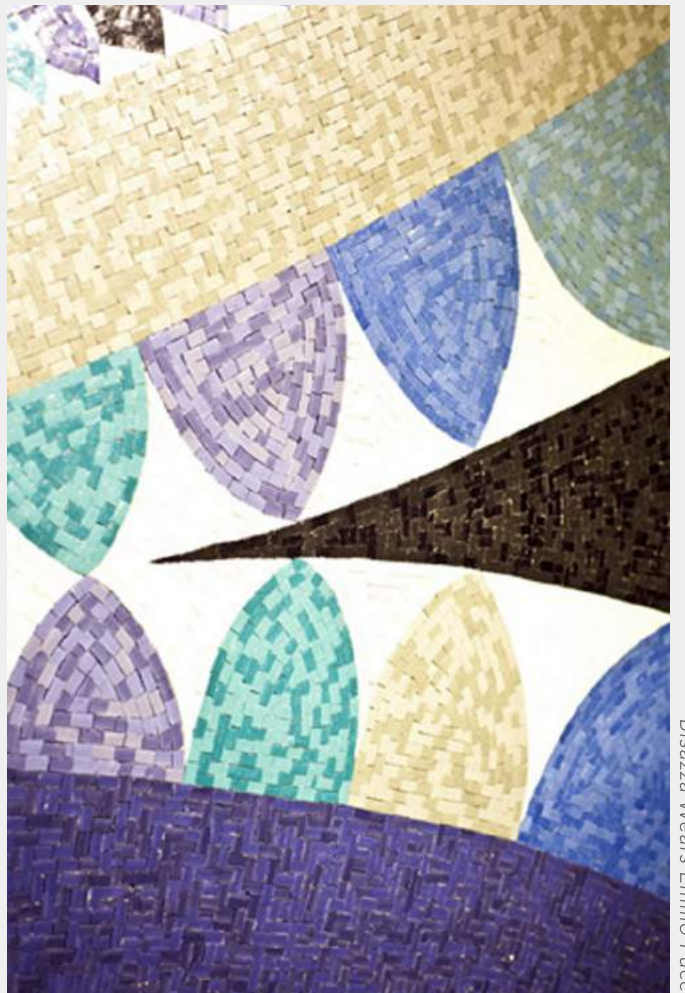
INNOVATION & COLLABORATIONS

Bisazza has partnered with many internationally acclaimed designers and artists on high profile projects including Jaime Hayon, Patricia Urquiola, Andree Putman's Maison Guerlain in Paris; Alessandro Mendini's Groningen Museum in Groningen; Fabio Novembre, Patricia Urquola, India Mahdavi, Marcel Wanders, and many other top designers.

Over the years, Bisazza partnered with different brands in the world of fashion, design and automotive. Among the others, in 2015, the company collaborated with Emilio Pucci fashion house for the launch of the "Bisazza Wears Emilio Pucci" mosaic collection.



Groninger Museum, Netherlands



Bisazza Wears Emilio Pucci

WHY BISAZZA

**INNOVATION
&
COLLABORATIONS**

**ALESSANDRO
MENDINI**

Mobili per Uomo



**MARCEL
WANDERS**

Pebbles



**ANDREE
PUTMAN**

Entevue



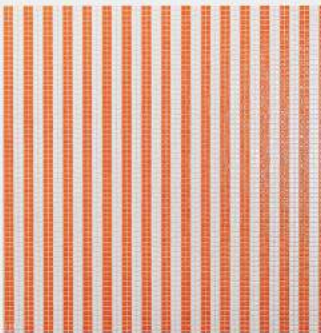
WHY BISAZZA

**INNOVATION
&
COLLABORATIONS**



**CARLO
DAL BIANCO**

Pensée and
Petit Trianon



**INDIA
MAHDAVI**

Plouf



**PATRICIA
UTQUIOLA**

By Side

MINI WEARS BISAZZA

Bisazza also partnered with Mini, for their "Mini wears Bisazza" seeing 4 Mini Coopers adorned in a variety of Bisazza's tiles to create custom crafted patterns of zebras, sunflowers, tartans, and dama, highlighting the flexibility of the vibrant tiles to be used on any surface, whether indoors or outdoors.



Mini wears Bisazza

WHY BISAZZA



Mini wears Bisazza

SUNOO TEMPLE HOUSE - MUMBAI

DESIGN SAKET SETHI

One million and three hundred thousand mosaic tiles embellish the surface of the private temple of the Sunoo Temple House, a residential project located near Mumbai designed by International architect Saket Sethi, of Saket Sethi Design & Archilogics Design.

A house with a green soul and innovative design, featuring a garden as a roof that becomes an integral part of the surrounding natural landscape. A unique environment where a private temple stands out, spreading a mystical and evocative atmosphere.

The temple, located adjacent to the house, is oval in shape with a spiral structure inside. Externally, it is entirely covered with Bisazza mosaic tiles from the ORO, Opera, Le Gemme collections, with motifs inspired by the galaxy.

With its one-of-a-kind features, the temple is one of the elements that most characterizes the entire project, becoming part of the natural landscape.



PROJECTS

PROJECTS

TENTREM HOTEL

Yogyakarta, Indonesia



Tentrem Hotel, Yogyakarta

Application:
Swimming pool

Material:
Bisazza Custom

PROJECTS

TENTREM HOTEL SEMARANG

Semarang, Indonesia

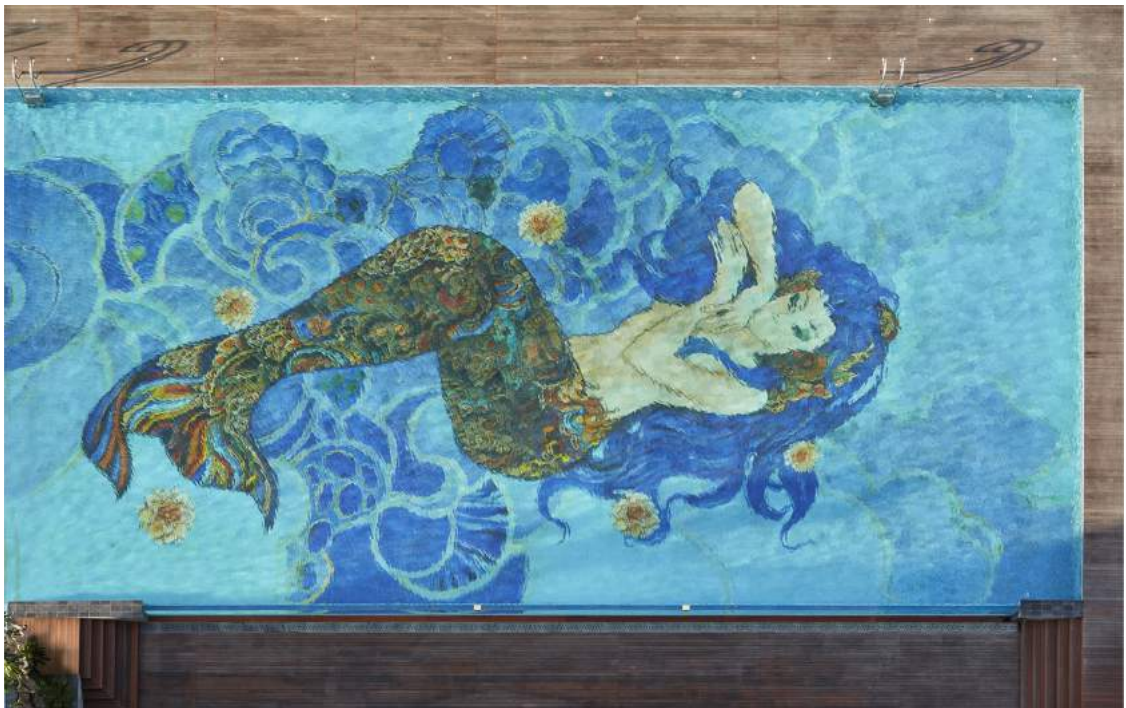


Tentrem Hotel Semarang

Application:
Swimming pool

Material:
Bisazza Custom

PROJECTS



Tentrem Hotel, Semarang

Application:
Swimming pool

Material:
Bisazza Custom

PROJECTS

PRIVATE RESIDENCE - DISTRIC 8

Jakarta, Indonesia

Application:
Swimming pool
Wall decoration

Material:
Bisazza Custom



PROJECTS

PRIVATE RESIDENCE

Jakarta, Indonesia



Private Residence, Jakarta



Application:
Swimming pool

Material:
Bisazza Custom

PROJECTS

PRIVATE RESIDENCE

Jakarta, Indonesia



Private Residence, Jakarta

Application:
Swimming pool

Material:
Bisazza Custom

PROJECTS



Private Residence, Jakarta

Application:
Swimming pool

Material:
Bisazza Custom

PROJECTS

SKYE BAR & RESTAURANT

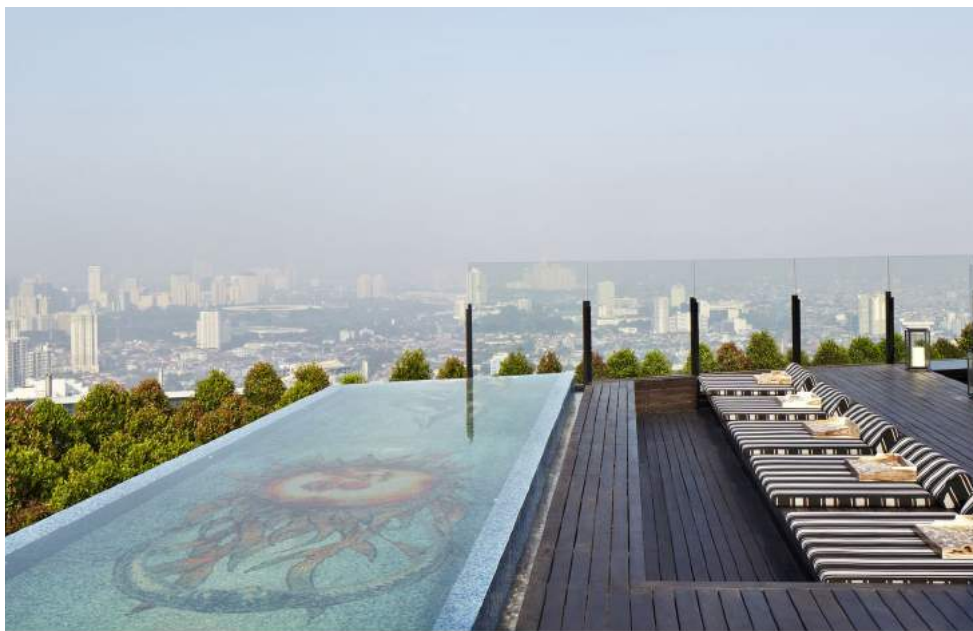
Jakarta, Indonesia

Skylar Bar & Restaurant, Jakarta



Application:
Infinity Pool
Wall decoration

Material:
Bisazza Custom



PROJECTS

RESTAURANT

Jakarta, Indonesia



Restaurant, Jakarta

Application:
Floor

Material:
Bisazza Custom

PROJECTS

PRIVATE RESIDENCE

Jakarta, Indonesia



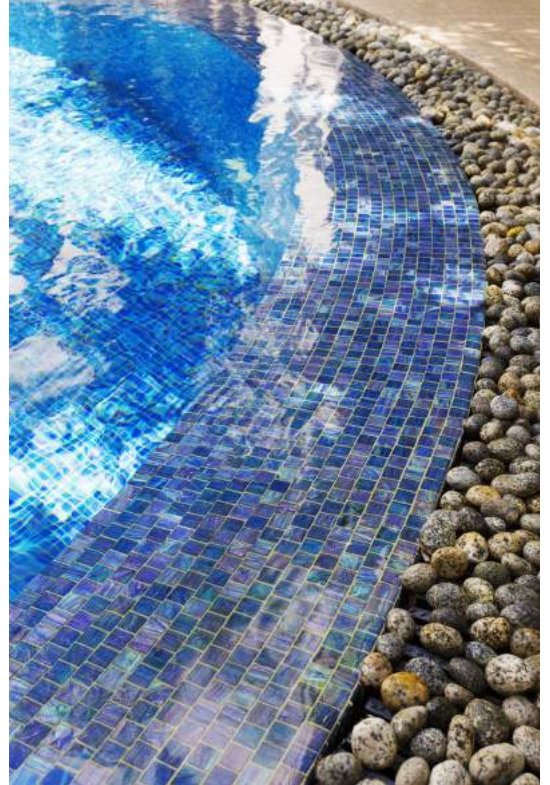
Private Residence, Jakarta

Application:
Swimming pool

Material:
Bisazza Custom

PROJECTS

Private Residence, Jakarta



Application:
Swimming pool

Material:
Bisazza Custom

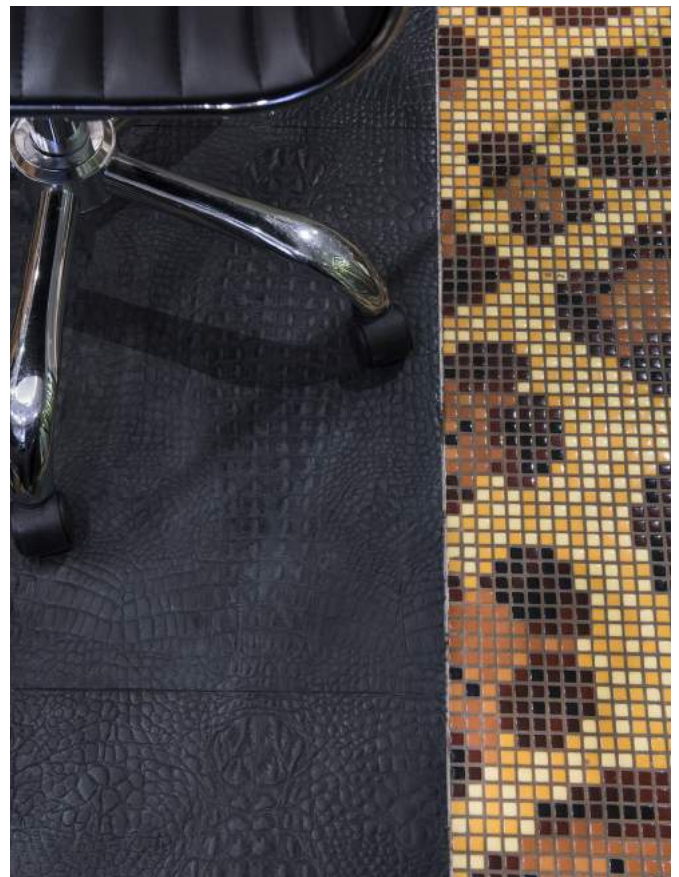
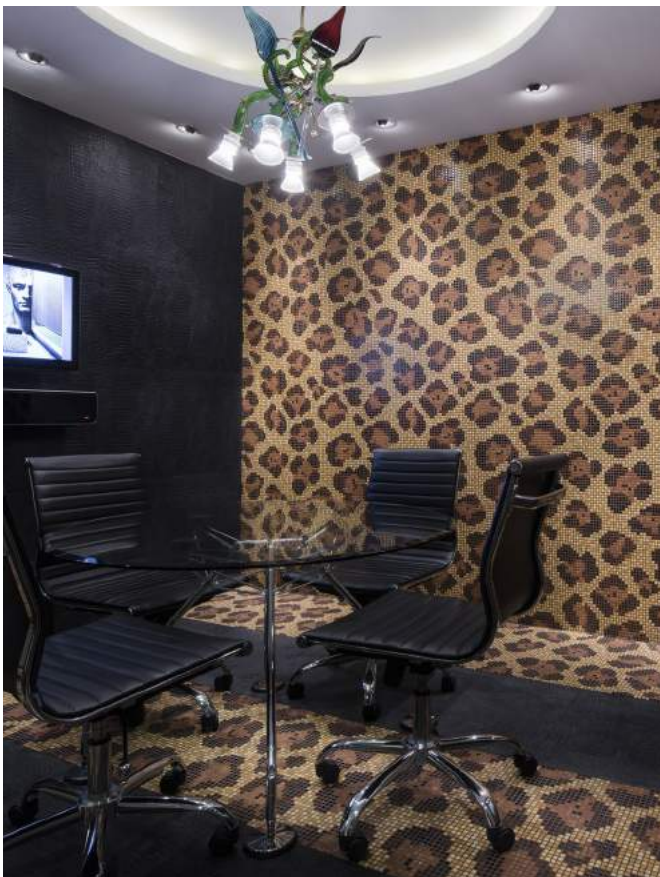
PROJECTS

MENARA PRIMA

Jakarta, Indonesia

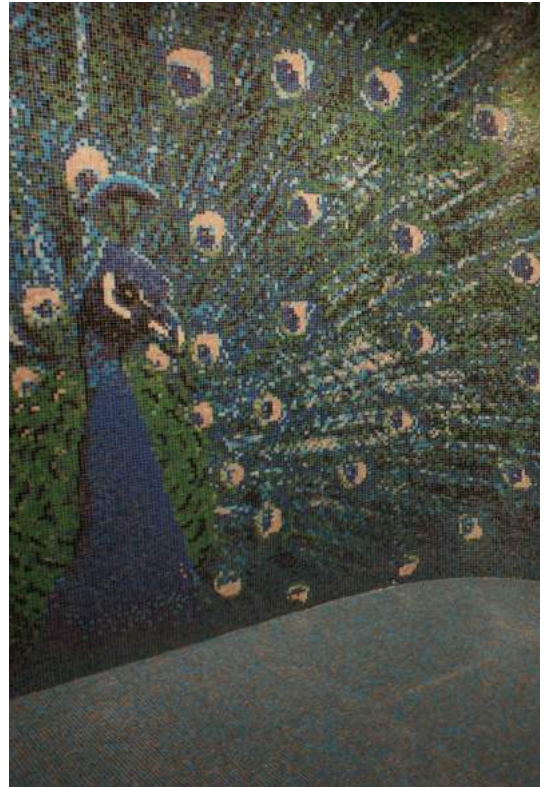
Application:
Floor
Wall decoration

Material:
Bisazza Custom



PROJECTS

Menara Prima, Jakarta



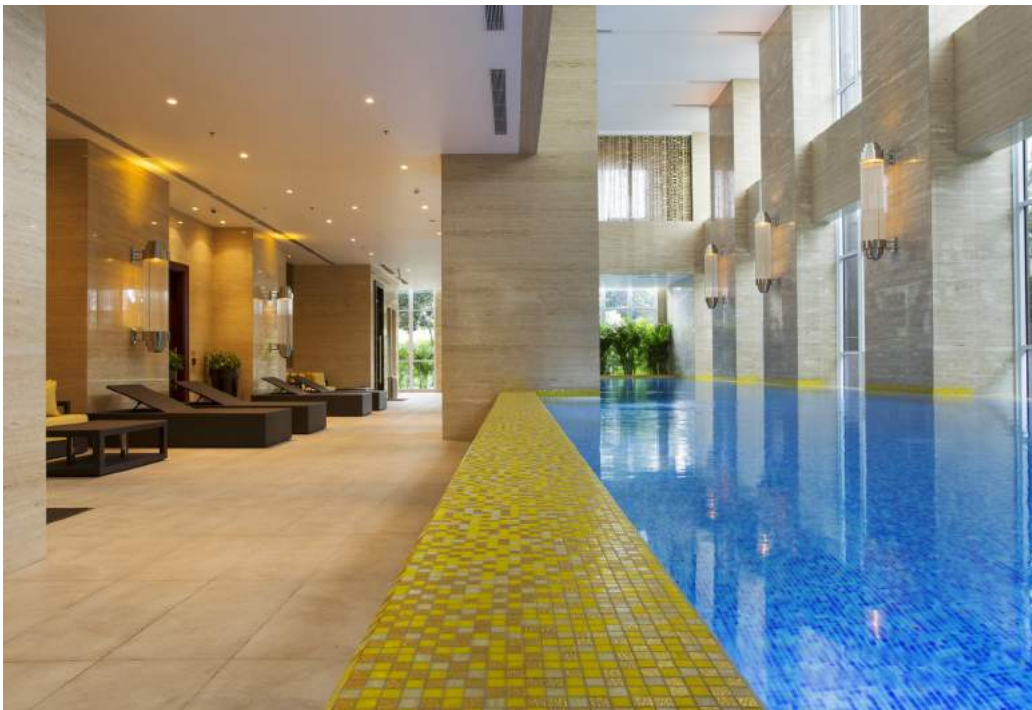
Application:
Floor
Wall decoration

Material:
Bisazza Custom

PROJECTS

THE PAKUBUWONO SIGNATURE

Jakarta, Indonesia



The Pakubuwono Signature, Jakarta

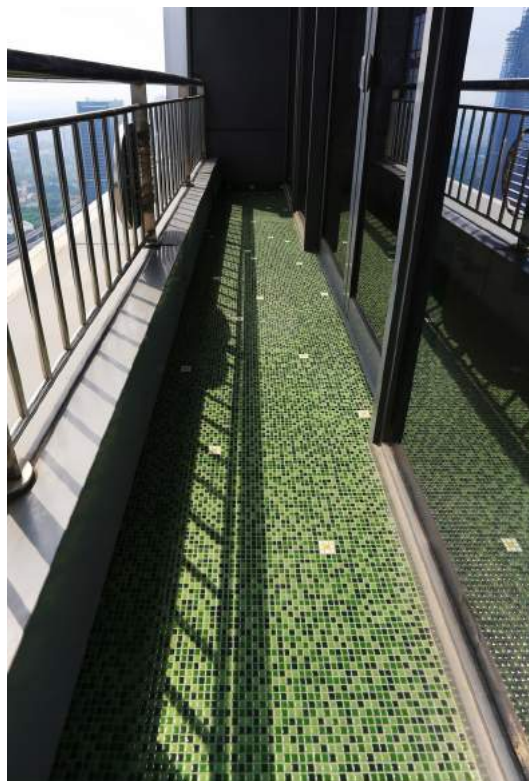
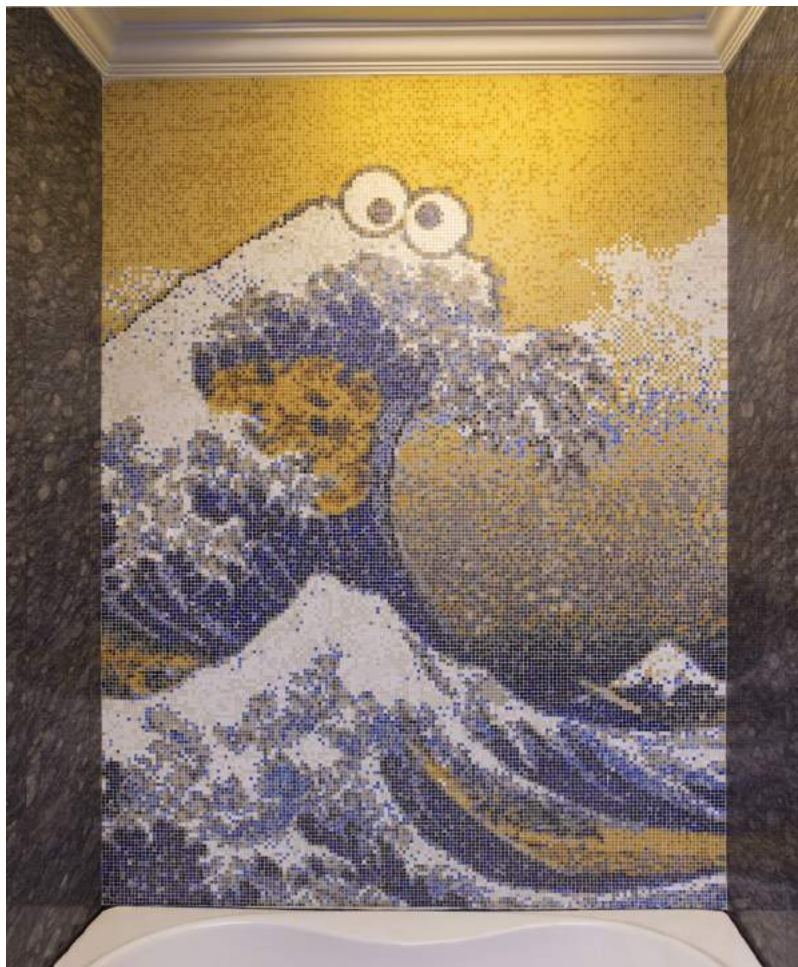
Application:
Swimming pool

Material:
Bisazza Custom

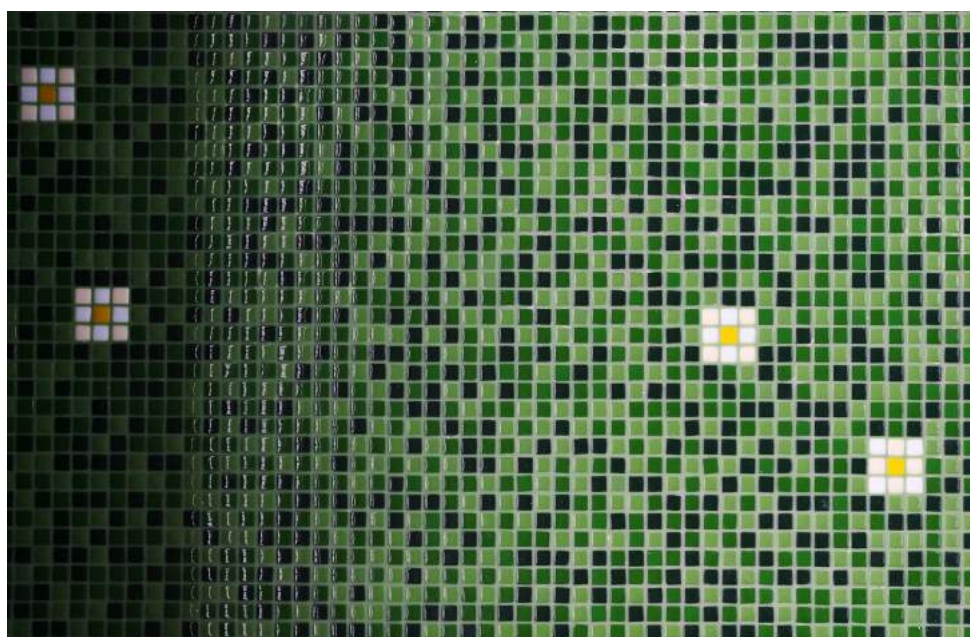
PROJECTS

PRIVATE RESIDENCE

Jakarta, Indonesia



Private Residence, Jakarta



Application:
Floor
Wall decoration

Material:
Bisazza Custom

PROJECTS

PRIVATE RESIDENCE

Jakarta, Indonesia

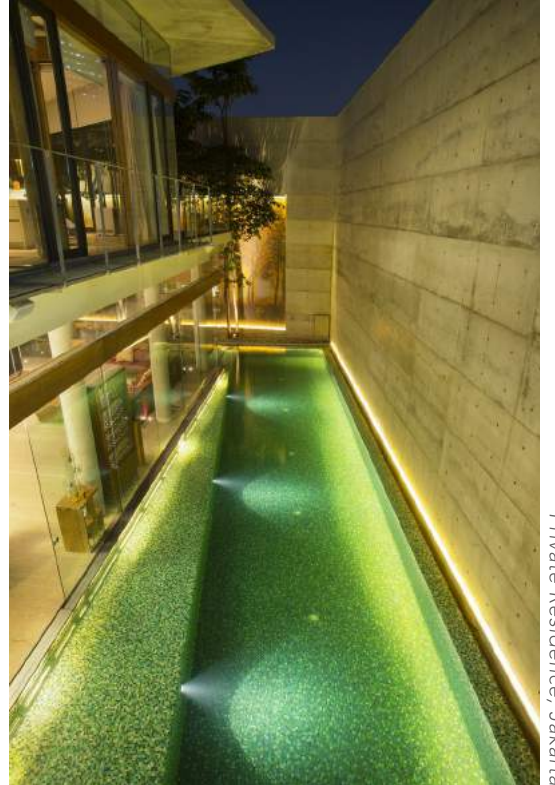


Private Residence, Jakarta

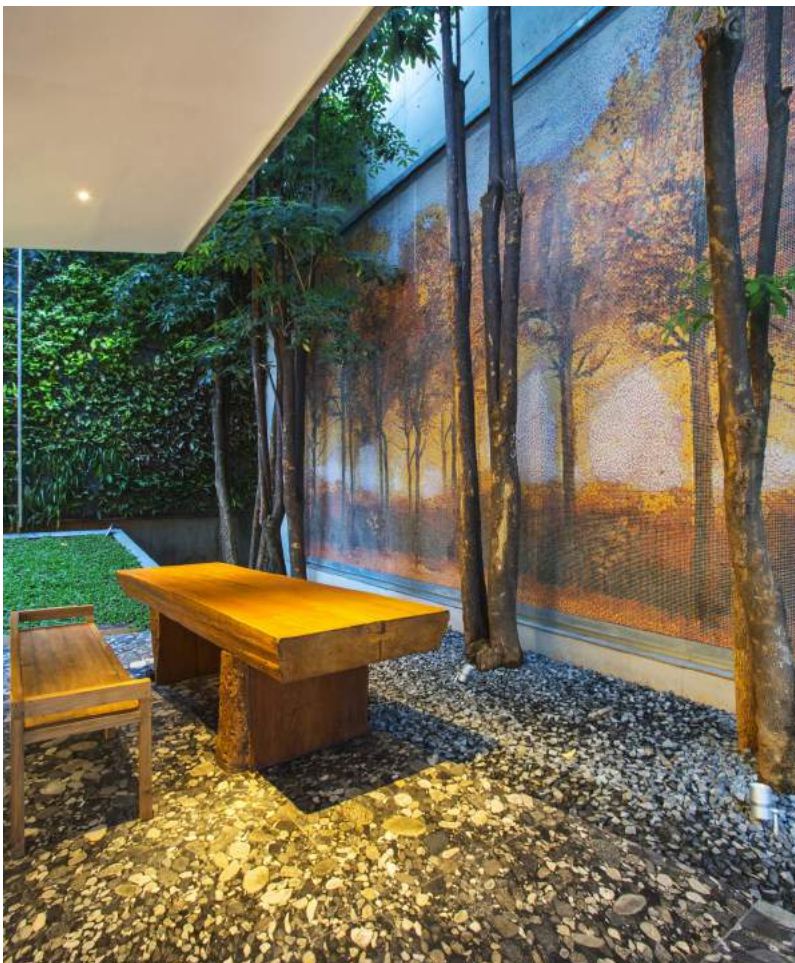
Application:
Swimming pool

Material:
Bisazza Custom

PROJECTS



Private Residence, Jakarta



Application:
Swimming pool
Wall Decoration

Material:
Bisazza Custom

PROJECTS

HOTEL HOLIDAY INN EXPRESS

Bali, Indonesia

Hotel Holiday Inn Express, Bali



Application:
Floor
Wall decoration
Reception

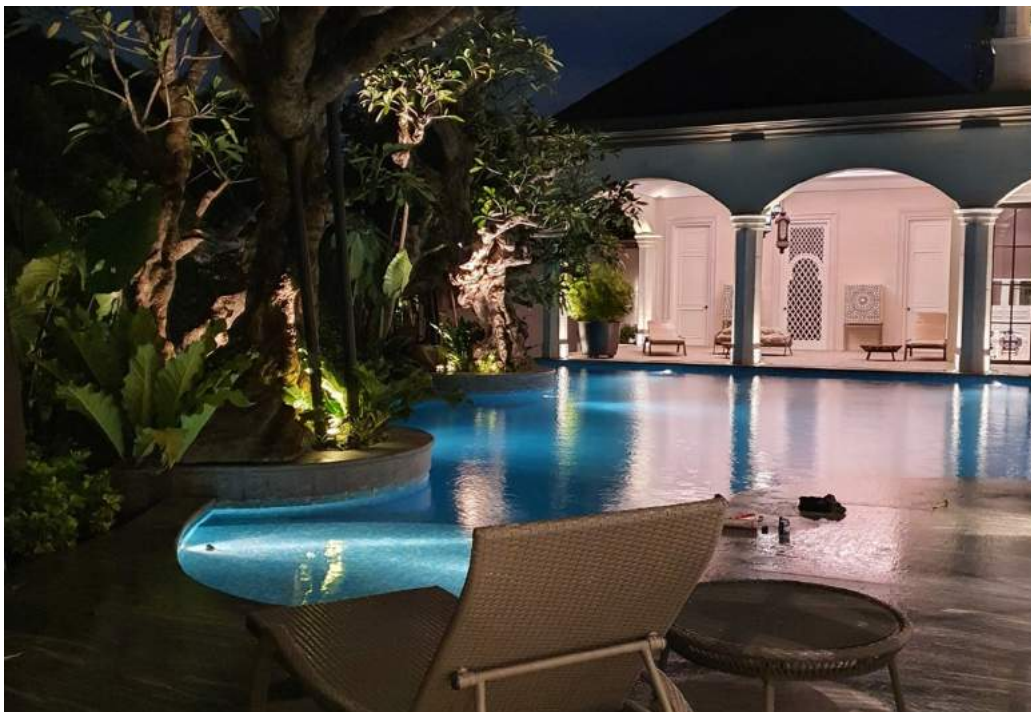
Material:
Bisazza Custom



PROJECTS

PRIVATE RESIDENCE

Jakarta, Indonesia



Private Residence, Jakarta

Application:
Swimming Pool

Material:
Bisazza Custom

COLLECTIONS

NEW COLLECTION

COLLEZIONE

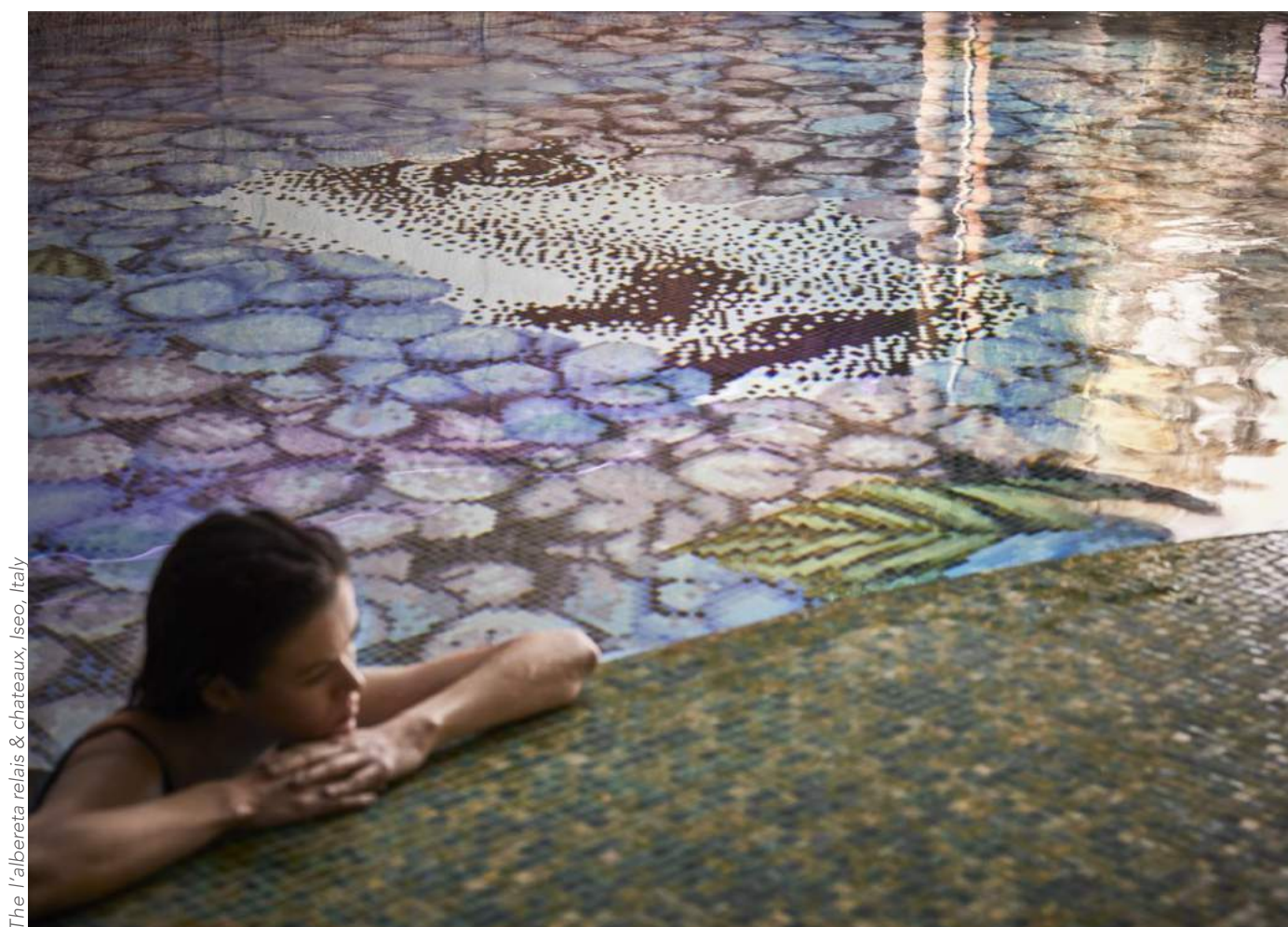
FORNASETTI



Collezione Fornasetti is a new Bisazza glass mosaic project that has evolved from a collaboration with Fornasetti, renowned postwar Italian design brand. Bisazza goes digital to give its mosaics a contemporary spin when reinterpreting some of the most iconic Fornasetti images.

NEW COLLECTION

A NEW PROJECT – COLLEZIONE FORNASETTI
RELAIS & CHATEAUX L'ALBERETA

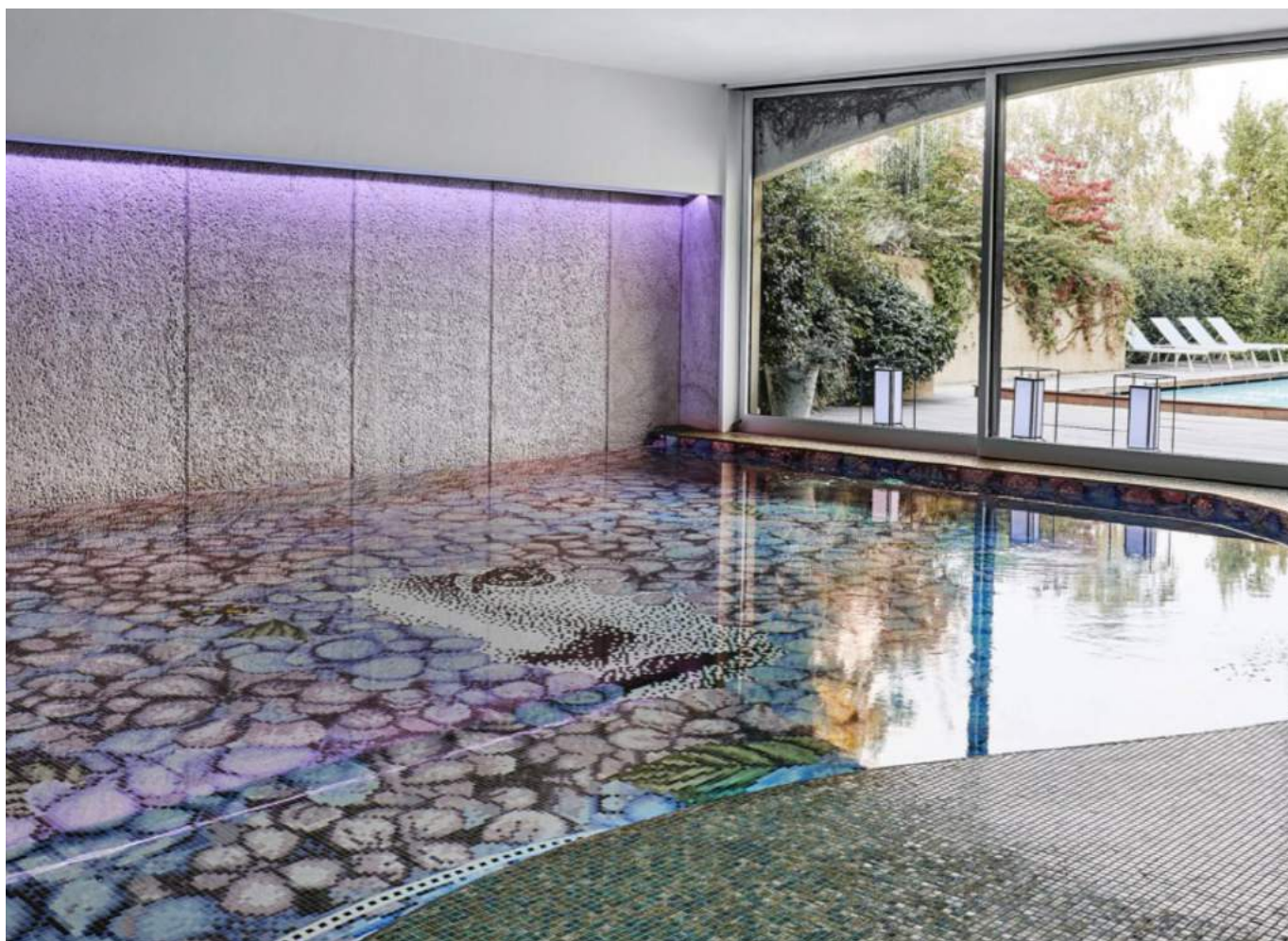


The l'albereta relais & chateaux, Iseo, Italy

Fornasetti and Bisazza have joined forces in a breathtaking collaboration — the new indoor pool at the L'Albereta Relais & Chateaux, a 5-star resort in the hills and famous vineyards of Franciacorta, in Northern Italy. Covered in 600,000 Bisazza mosaic tiles that compose *Ortensia*, one of the most representative decorative patterns made in partnership with Fornasetti, the pool encompasses the mysterious countenance of Fornasetti's muse, the popular Belle Époque opera singer, Lina Cavalieri.

Enhanced and exalted by the water and the magnitude of the pool's surfaces, the muse's face discreetly surfaces amid a multitude of petals formed by 25 pastel shades of pink and blue glass tiles.

Art, design and luxury intersect in this custom-made project, thanks to the style, fine craftsmanship and savoir-faire of the two Italian companies that faithfully interpret and express the values and excellence of the hotel.



NEW COLLECTION

THE FORNASETTI COLLECTION

BOCCA

The red mouth is one of the recent motives penned by Fornasetti: a trace of India ink and some lipstick for an enigmatic smile.

The mosaic interpretation dismantles and reassembles the subject in wave after wave of white, black and red glass and enamel mosaic.

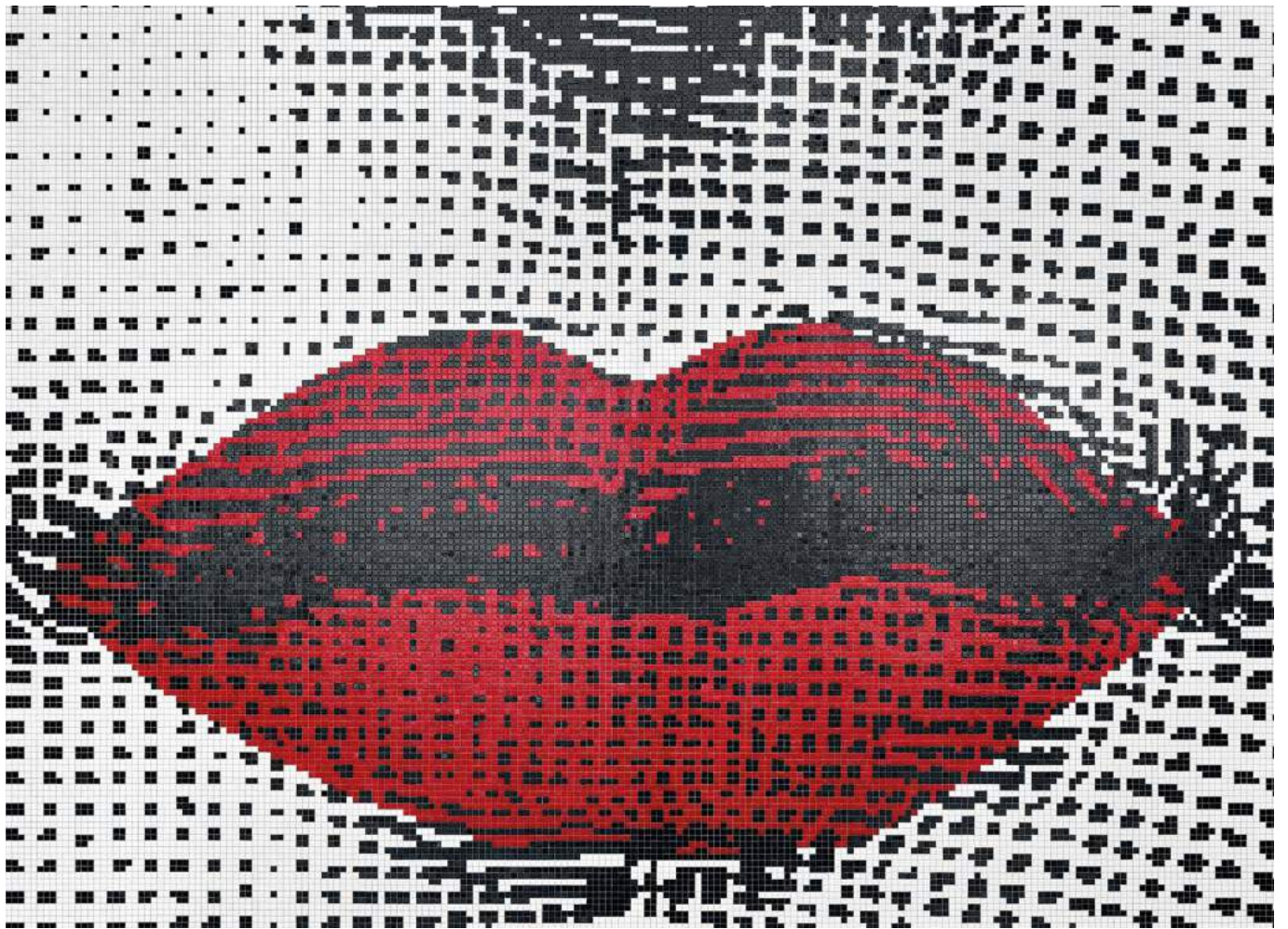




NEW COLLECTION



Bisazza Showroom, Solferino 22 flagship store



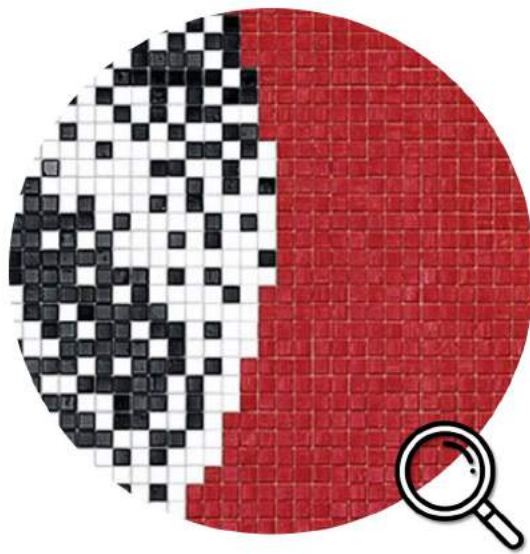
NEW COLLECTION

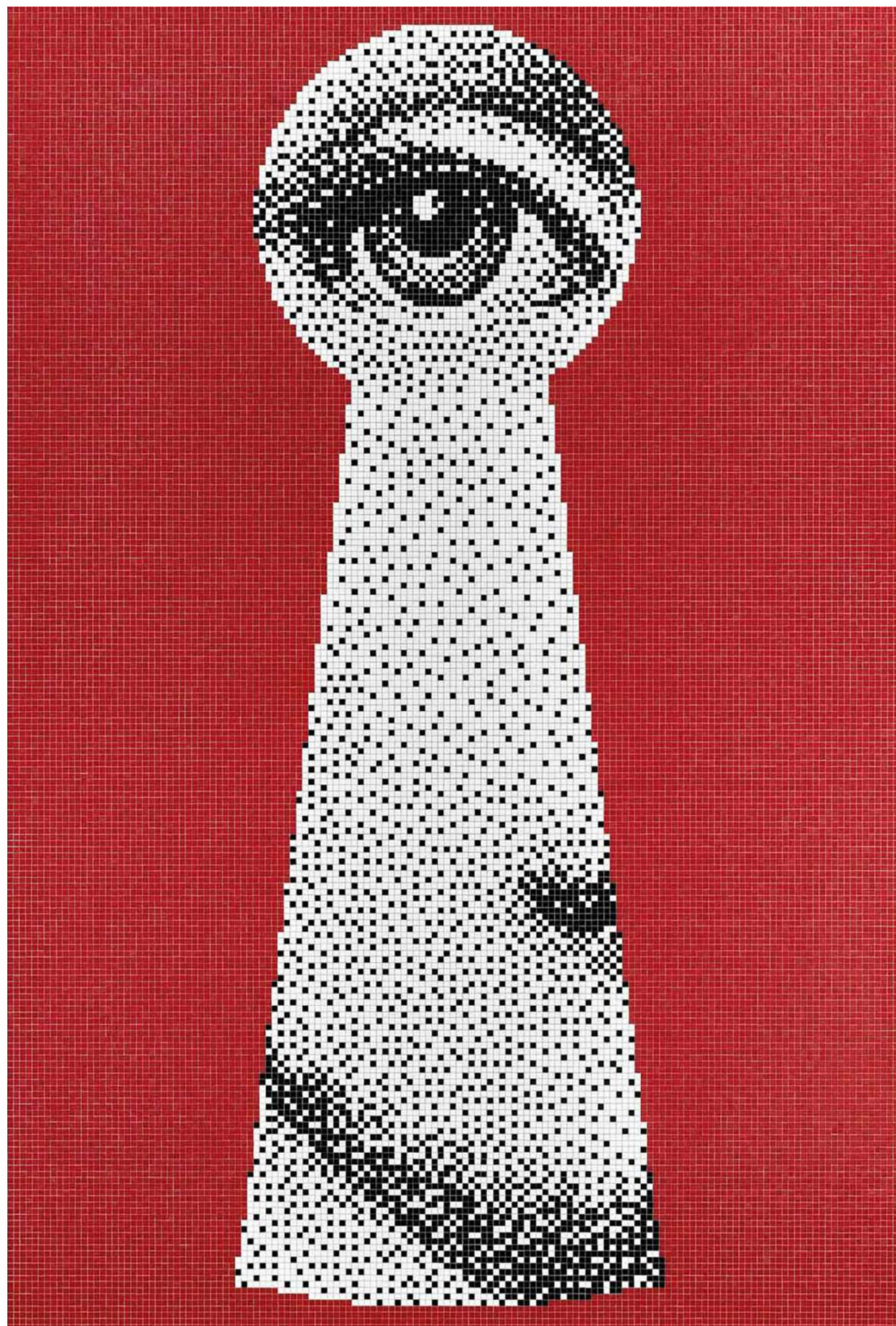
THE FORNASETTI COLLECTION

SERRATURA

In this wry and seductive decoration, set against an opulent red background, the mysterious glance of the Fornasetti muse, Lina Cavalieri, peers through the keyhole of an imaginary door.

Using only three different colours, more than 10,000 Bisazza tiny glass mosaic tiles were used.





NEW COLLECTION

Serratura Behind the Scene





NEW COLLECTION

THE FORNASETTI COLLECTION

SOLI A CAPRI

The sun is another favoured subject for Piero Fornasetti: surrounded by rays and subtle humor, the imaginary face is none other than a tongue-in-cheek self-portrait.

24kt gold and various shades of glass and enamel mosaic were used to create this digital interpretation.

The decoration is available in two colour combinations: one with a background of blues that recall the Capri sea and sky, and one in a more restrained, sophisticated grey.





NEW COLLECTION



Soli A Capri Behind the Scene



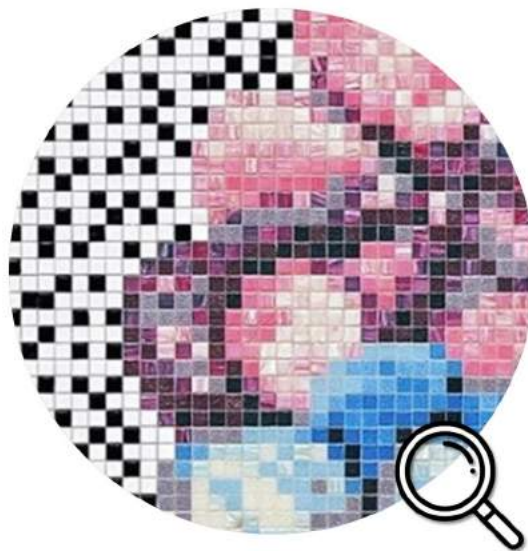
NEW COLLECTION

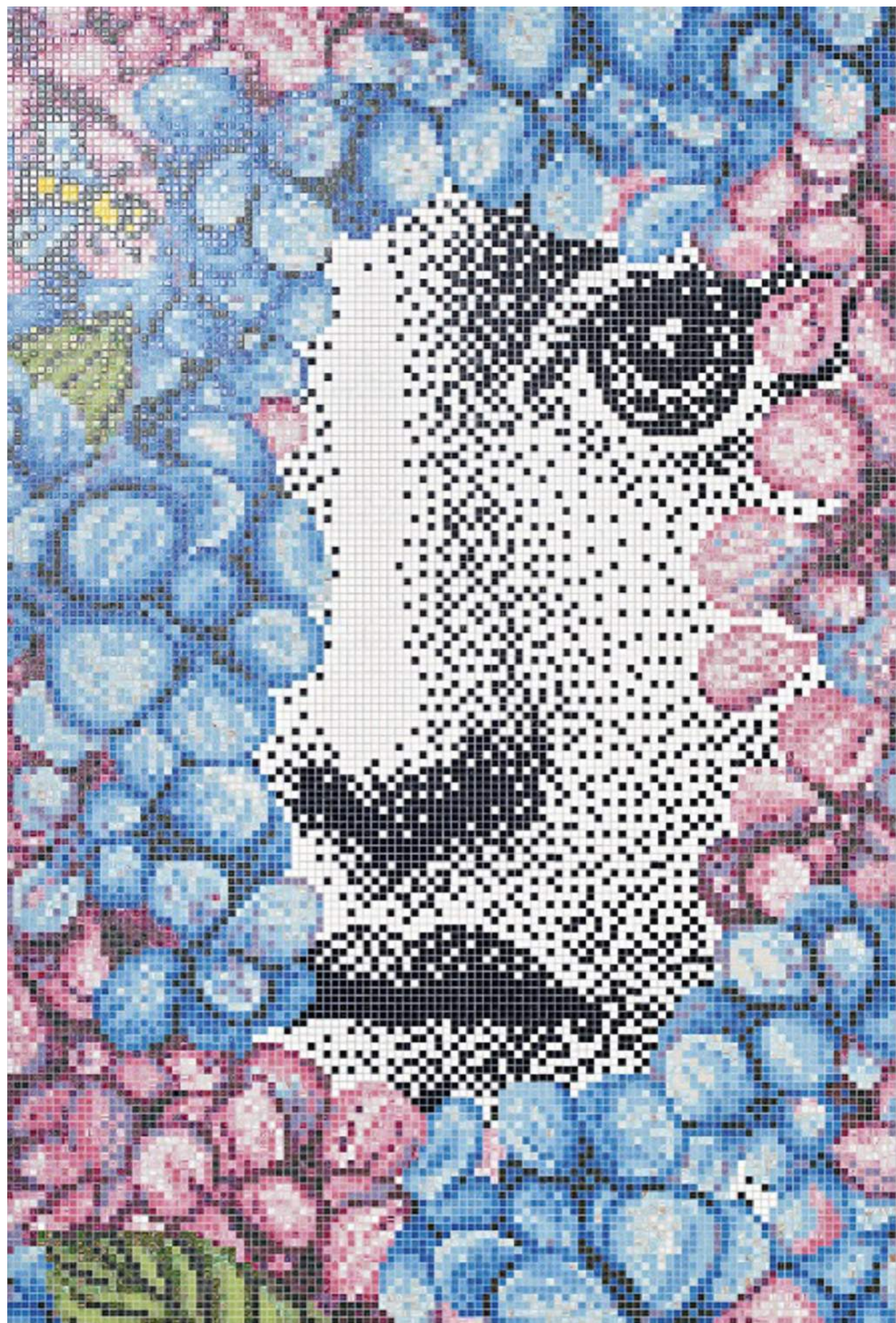
THE FORNASETTI COLLECTION

ORTENSIA

The classic beauty of the idealized face of Lina Cavalieri - a popular Belle Époque opera singer - turned Fornasetti muse - returns with Ortensia.

Bisazza uses the digital mosaic technique to reinterpret the neo-romantic atmosphere of the subject. The enigmatic face is crafted in monochrome then beautifully framed with petals using twenty-five pastel coloured mosaic tiles.





NEW COLLECTION



Bisazza Showroom, Solferino 22 flagship store

“People increasingly need decoration, because it has the same function as music: it may not seem absolutely necessary but it is. It's food for the soul.”

Barnaba Fornasetti



NEW COLLECTION

FORNASETTI



Soli a Capri Blu
5.16 x 2.90 M

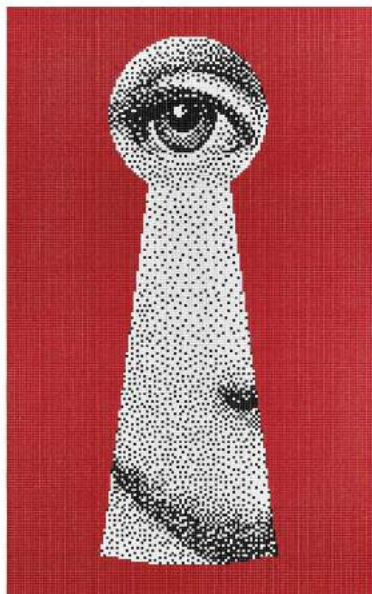


Soli a Capri Grigio
5.16 x 2.90 M

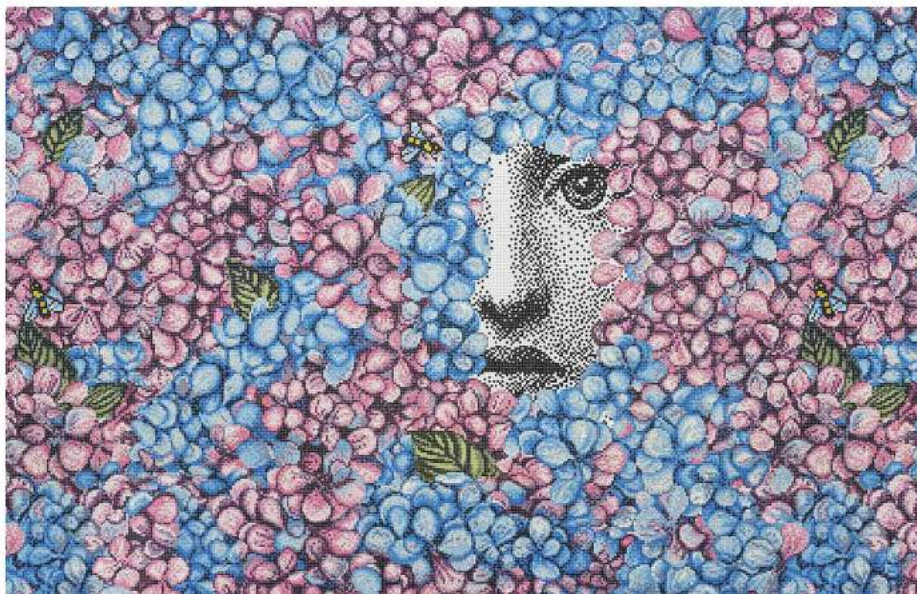
*Decoration created with glass, Smalto
and 24k gold 10 x 10 mm mosaic tiles.*

NEW COLLECTION

FORNASETTI



Serratura
1.29 x 2.90 M



Ortensia
3.87 x 2.90 M



Bocca
6.46 x 2.90 M

*Decoration created with glass, Smalto
and 24k gold 10 x 10 mm mosaic tiles.*

CONTACT US

SHOWROOMS & OFFICES

Jakarta

Jl. Prof. Dr. Satrio Blok C4 No.10
Kuningan Timur, Setiabudi,
Jakarta Selatan 12950,
Indonesia

P. +62 3972 2018
F. +62 3972 2028
WA +62 811 9740 387

Bali

Jl. Cargo Permai No.91
Ubung, Kec. Denpasar Utara,
Kota Denpasar,
Bali 80116, Indonesia

P. +62 361 9090 962
WA +62 811 9740 387

Medan

Komplek Pergudangan Prima
Center Blok D No.9
Jl. Gatot Subroto Km. 6,7
Medan 20118, Indonesia

WA +62 81 9740 387

Semarang

DS Coworking Siliwangi
Siliwangi Plaza
Jl. Jenderal Sudirman No.187
Semarang 50149, Indonesia

WA +62 811 9740 387

Surabaya

Jl. Embong Malang No. 67A
Kel. Kedungdoro, Kec. Tegalsari,
Surabaya 60261, Indonesia

P. +62 31 9927 7379
WA +62 811 9740 3877

Pangkep Sulawesi

Kp. Siloro, Desa Mangilu
Kec. Bungoro, Kab. Pangkep
Sulawesi Selatan 90651,
Indonesia

WA +62 811 9740 387

PRODUCTION FACILITIES

Karawang Factory

Jl. Tarum Timur No. 64
Desa Tamelang
Kecamatan Cikampek,
Karawang 41373, Indonesia

P. +62264317577
F. +62264310808

Pangkep Factory

Kp. Siloro, Desa Mangilu
Kec. Bungoro, Kab. Pangkep
Sulawesi Selatan 90651,
Indonesia

WA +62 811 9740 387

Jakarta Showroom

Jl. Prof. Dr. Satrio Blok C4 No 10
Kuningan Timur, Setiabudi
Jakarta Selatan 12950, Indonesia

P. +62 3972 2018
F. +62 3972 2028
WA +62 811 9740 387

