

CITATAH

2022
CATALOG

LEATHER
TILES



LEATHER SURFACES
nextep

© Copyright 2021 Citatah

All rights reserved. No part of this publication may be reproduced, distributed or transmitted in any form or by any means, including photocopying, scanning or other electronic or mechanical methods, without the prior written permission of the publisher, except where noted.

Published January 2021, color of leathers in this publication may vary slightly due to the printing process, desktop, and mobile preview. Final color selection should be made from stone samples.

The detailed information in this publication may be modified or updated without prior notice.

LEATHER SURFACES
nextep
LEATHER TILES

CONTENTS

06 - 15
ABOUT

16 - 09
SURFACES

10 - 17
COLOURS

18 - 95
FLOORS


96 - 107
WALLS

108
BACKING

109 - 79
Q & A

111
TERMS & CONDITION

112 - 114
CONTACT US



Crafted by Italian leather specialists Pride, founded by Lino Priante in 1956 and still headed by his son, Luigi, Nextep tiles are crafted from durable, shrink-proof grès porcelain and warm made-in-Italy hides.

Citatah holds the exclusive rights to distribute Nextep in Indonesia, since 2011. Perfect for boardrooms, bars and boudoirs, Nextep's luxe floor tiles offer a range of naturalistic colours and finishes, from crocodile and elephant through to suede and floral. Wall tiles span the gamut from decadent 3D panels to naturalistic colourways and textures



*The Nextep Leather project reflects my love for leather
inherited from my father. It is an exquisite
synthesis of creativity and tradition.*

Luigi Priante

leather

Luigi Priante



theleathership

"I proudly believe that leather is a unique, versatile and precious material, with remarkable value in its use, too often confined to a limiting symbolic context"

Luigi Priante, a creative, eclectic entrepreneur, has created synergy between the experience in the family tannery, founded by his father and the versatile use of leather in design.

Thirty years of history enhance his wealth of knowledge and skills. The know-how gained from producing hides for the furnishing, clothing and leather goods, nautical and aircraft industries is an asset that flows in every Pride leather proposal. Pride design, produce and distribute interior design products which are original and unusual in their intended use. They are designed to combine aesthetic uniqueness and functionality with naturalness and the class of made in Italy hides. Hanging marvellously somewhere between art and design, the Pachamama furnishing accessories are a stylistic synthesis of different people cultures. They are rich in materials, workmanship and decorations, completely handmade in a limited edition.

The Nextep Leather tiles for floors and wall coverings are born from the research of an aesthetic and technical evolution, aimed at introducing a new family of precious materials for the interior decoration.

Eclipse is a line of contemporary leather rugs, designed to be flexible, non-slip with a soft feel and modular design. The use of an innovative variable pressure heat-bonding process allows leather to be bonded with a selection of highly-functional technical material bases, produced entirely in Italy.

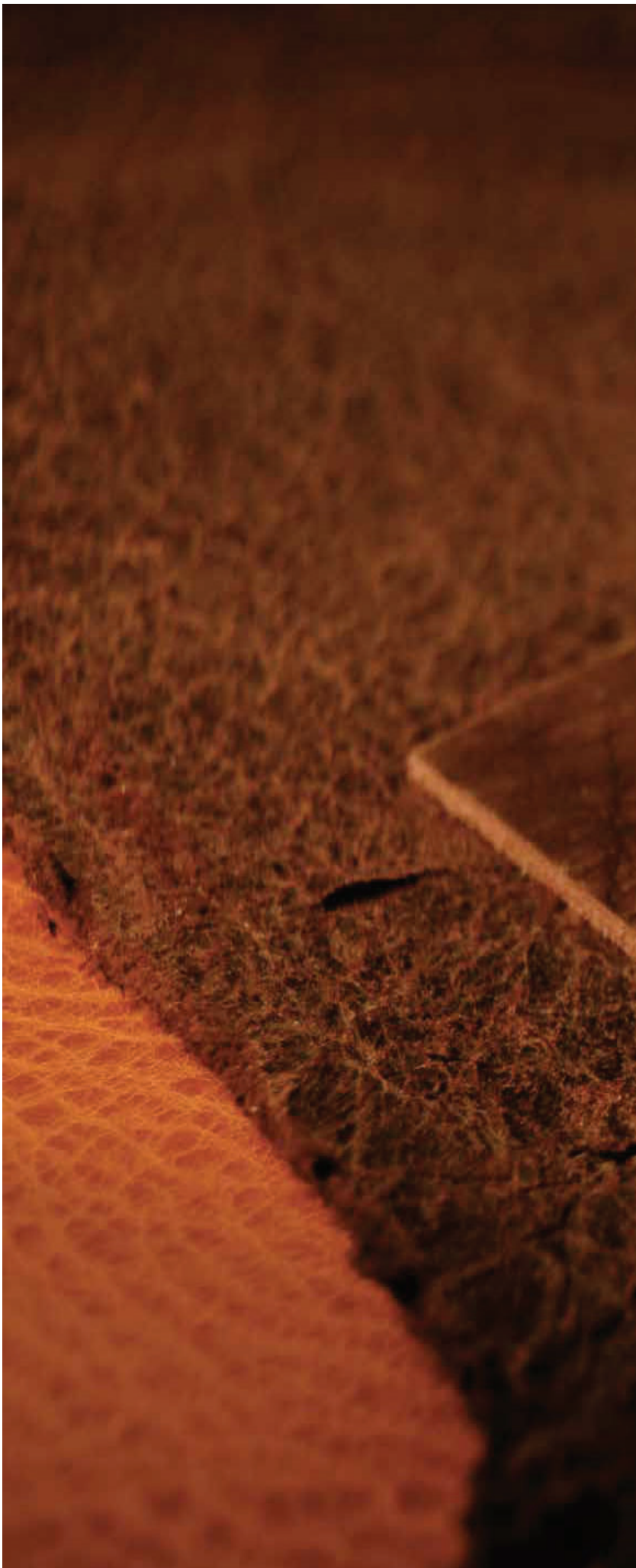
"The journey into the world of leather can be fantastic. For our company, this is a daily experience. I hope you can feel these emotions: the ones evoked by walking barefoot on a warm silent floor."





touch of hands

Leather has never been so strong. Stone has never been so soft. The leather tiles by Nextep bring together two elements and two visions of know how: stoneware for strength and steadiness, leather for a unique floor. Each surface becomes celebration of an unrepeatable nature. Each space evokes exclusive sensations: sensuality, elegance, warmth and intimacy. Aimed to guarantee abrasion resistance, natural tanning, aniline dyeing and surface treatment give different colours and unique shades to the leather. Interiors come alive: they breathe, absorb sounds and mature over time with you.





leather



leather



thequalitypath

The quality process begins with the choice of the skins, at the sources of supply.

It combines technology, innovation and traditions made of patience and manual skills. It implies competence, commitment, sensibility and taking care of the finest detail. It creates beauty with a creative spirit, frees the essence of the skins and enhances their natural features. It delivers excellence in terms of workmanship, aesthetic and functionality.

The background of the entire page is a close-up photograph of a brown leather surface. The leather has a rich, warm brown color with a complex, wrinkled texture. The lighting creates subtle gradients, with some areas appearing slightly darker and others lighter, emphasizing the grain and creases of the material.

leather

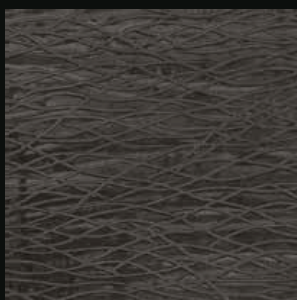
Steady, compact, easy to clean, water and oil repellent, stain and fire resistant: Nextep tiles are the perfect choice for those who want something solid under their feet, but long to walk on clouds.



surfaces



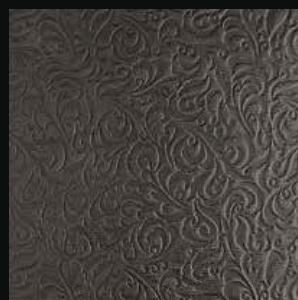
naturale



arcadia

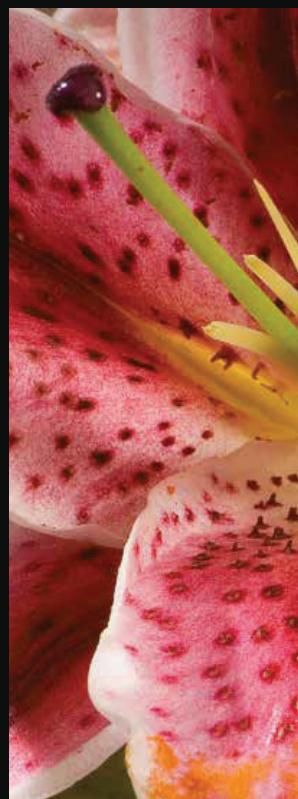
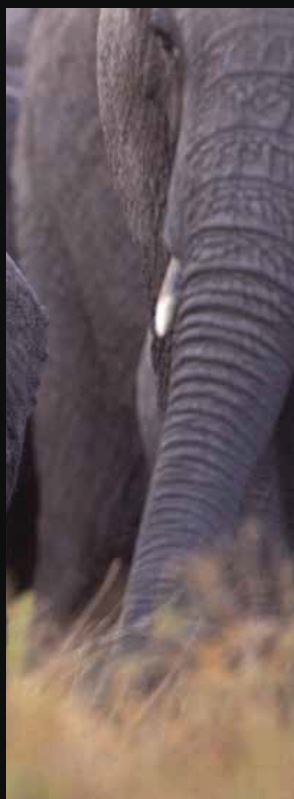


elefante



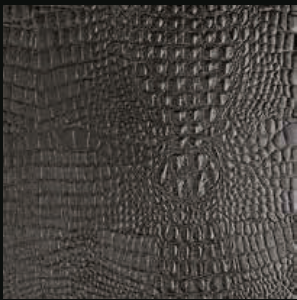
giglio

Creativity joined to precision. In nature each element is unique, but reach its best expression in the overall composition. Seven decorations made by embossing, which darkens the part under pressure. Seven kinds of surface and unlimited possible combinations, to transform your floor in an intense tactile experience. Walk on a piece of art: yours.





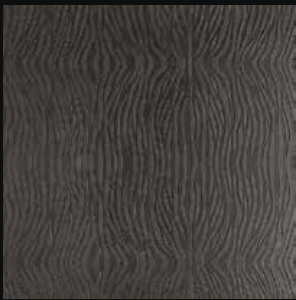
treccia



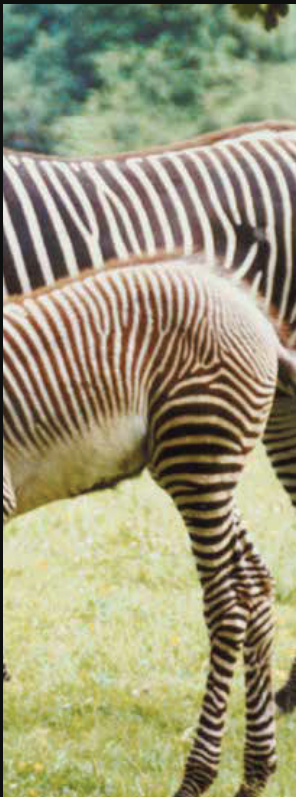
caimano



damasco



zebra





floors
naturally leather

The naturalness of the floorings by Nextep Leathers transforms any space into a hospitable place of wellbeing that is unique and extraordinarily delightful both to touch and to see. The leather surface is soft yet tread-resistant, reliable and safe, because it is treated by Pride according to the dictates of the Italian traditional tanning methods, exploiting the technological expertise and knowledge of hides acquired by Luigi Priante in more than 30 years of managing the family tannery. The multisensory sensations of leather "live" in floor coverings, which are transformed over the years and are enriched by the marks of time, acquiring an exclusive "worn" feel which increases their appeal inside residences, hotels, offices and show rooms.

colours

01 | ambra

02 | ardesia

03 | avorio

04 | choco

05 | mogano

06 | moresco

18

26

34

40

48

54



sabbia|07

nero|08

grafite|09

antracite|10

mica|11

60

68

74

80

86



leather
01

ambra

Precious and bright, like the resin from which it takes its name. Every element interprets the most sophisticated style.



leather
01

Ambra Treccia 30x60-Rivestimento - Ambra 30x60-Pavimento





Ambra Caimano

leather
01

Ambra 45x45





naturale



Size(mm) 600x600x5.5

elefante



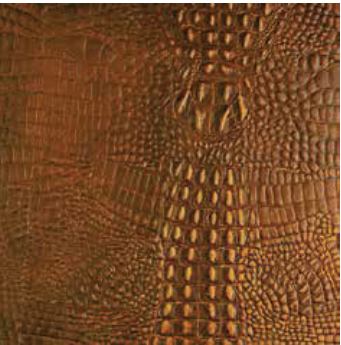
Size(mm) 600x600x5.5

zebra



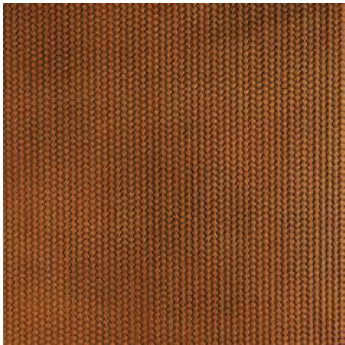
Size(mm) 600x600x5.5

caimano



Size(mm) 600x600x5.5

treccia



Size(mm) 600x600x5.5

damasco



Size(mm) 600x600x5.5

giglio



Size(mm) 600x600x5.5

arcadia



Size(mm) 600x600x5.5

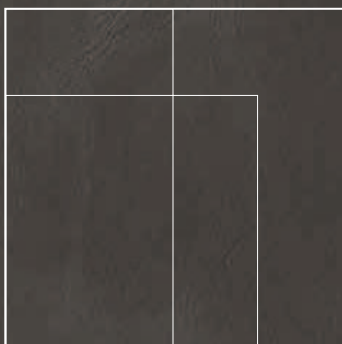


leather

02

ardesia

Tough and vigorous. Every element expresses strong formal and aesthetic severity.



leather

02

Ardesia Elefante



Ardesia 60x60 Pavimento - Gradino/Step 33x122

leather

02

Ardesia 60x60



naturale



Size(mm) 600x600x5.5

elefante



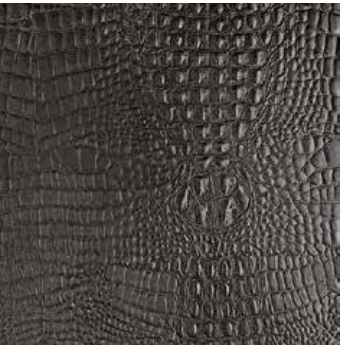
Size(mm) 600x600x5.5

zebra



Size(mm) 600x600x5.5

caimano



Size(mm) 600x600x5.5

treccia



Size(mm) 600x600x5.5

damasco



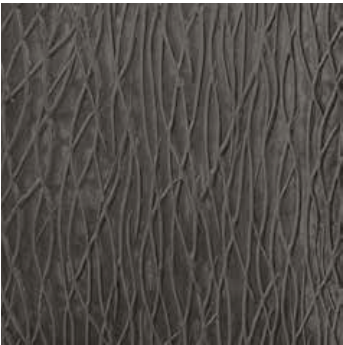
Size(mm) 600x600x5.5

giglio



Size(mm) 600x600x5.5

arcadia



Size(mm) 600x600x5.5



leather
03

avorio

Decorated by nature. Every element blends into the setting in a unique and inimitable way.



leather

03



Avorio 30x60-60x60 - Moresco 30x60-60x60



naturale



Size(mm) 600x600x5.5

elefante



Size(mm) 600x600x5.5

zebra



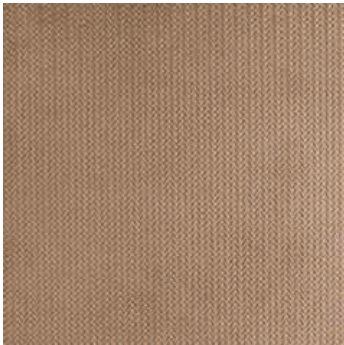
Size(mm) 600x600x5.5

caimano



Size(mm) 600x600x5.5

treccia



Size(mm) 600x600x5.5

damasco



Size(mm) 600x600x5.5

giglio

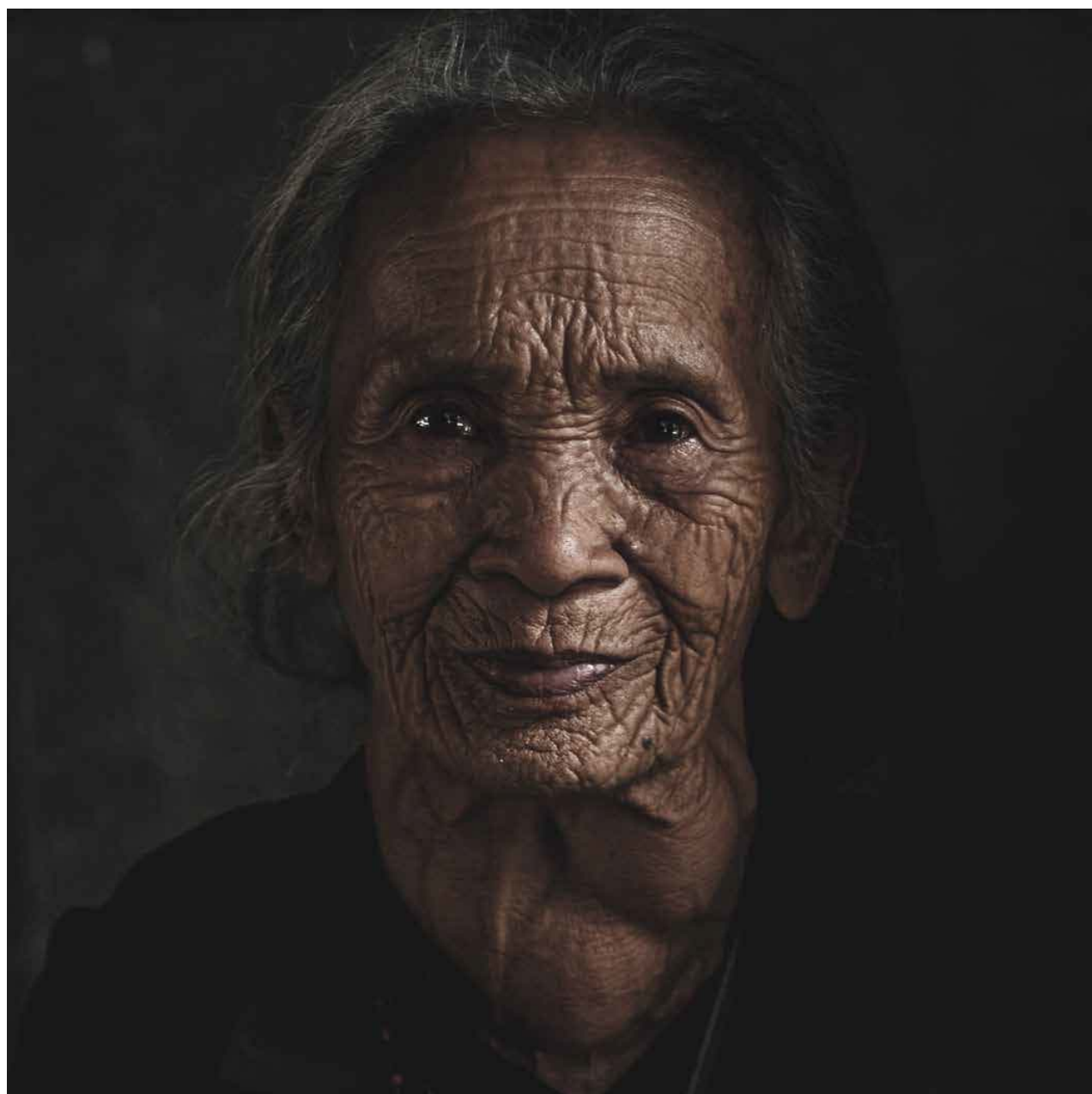


Size(mm) 600x600x5.5

arcadia



Size(mm) 600x600x5.5

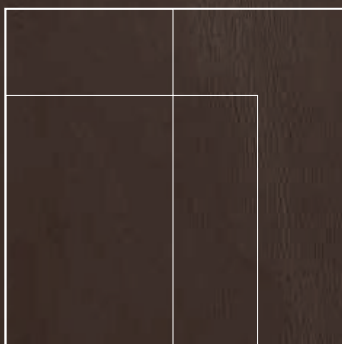


leather

04

choco

Beautiful and imperfect. Every element shows off the signs of a lived life.

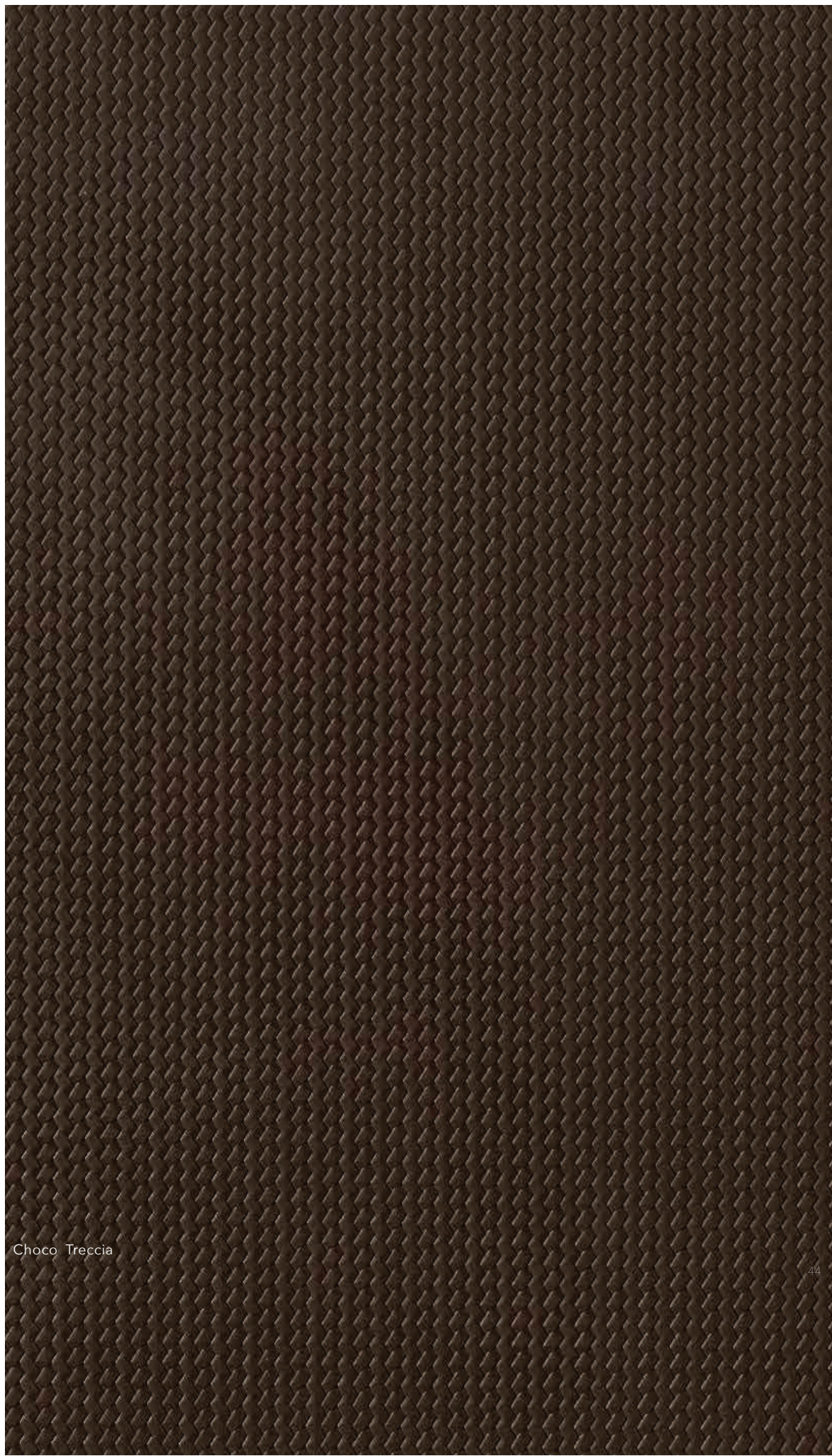


leather

04



Choco 60x60



Choco Treccia





naturale



Size(mm) 600x600x5.5

elefante



Size(mm) 600x600x5.5

zebra



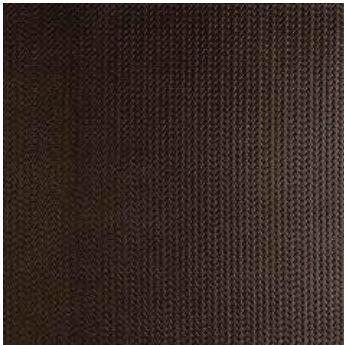
Size(mm) 600x600x5.5

caimano



Size(mm) 600x600x5.5

treccia



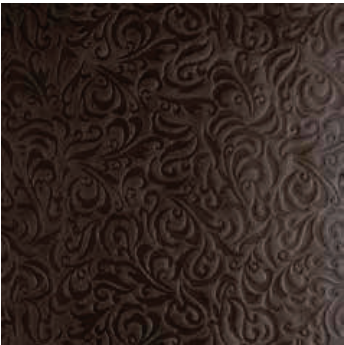
Size(mm) 600x600x5.5

damasco



Size(mm) 600x600x5.5

giglio



Size(mm) 600x600x5.5

arcadia



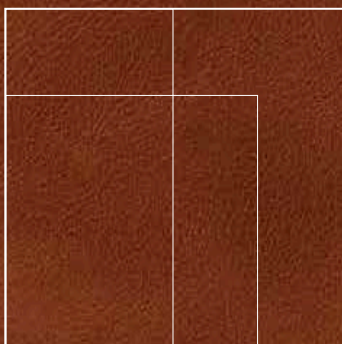
Size(mm) 600x600x5.5



leather
05

mogano

Vegetable tanned. Every element is the result of a natural transformation.







Mogano 30x60

naturale



elefante



zebra



caimano



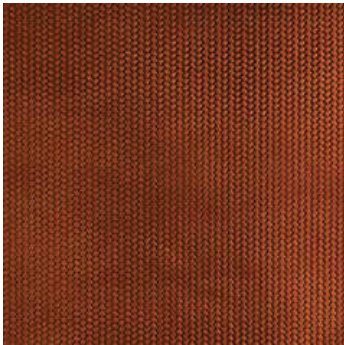
Size(mm) 600x600x5.5

Size(mm) 600x600x5.5

Size(mm) 600x600x5.5

Size(mm) 600x600x5.5

treccia



Size(mm) 600x600x5.5

damasco



Size(mm) 600x600x5.5

giglio



Size(mm) 600x600x5.5

arcadia



Size(mm) 600x600x5.5

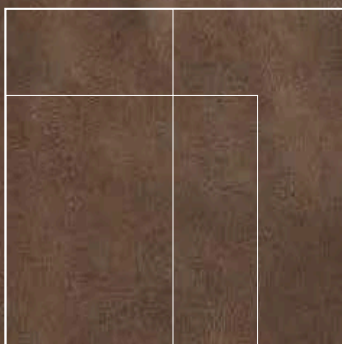


leather

06

moresco

Warm and delicate. Every element enfolds in an atmosphere of soft well-being.



leather

90

Moresco 60x60 - Rivestimento - Moresco Caimano 60x60 - Pavimento



naturale



Size(mm) 600x600x5.5

elefante



Size(mm) 600x600x5.5

zebra



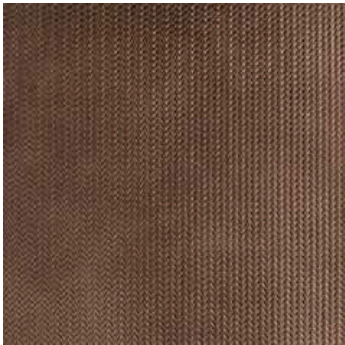
Size(mm) 600x600x5.5

caimano



Size(mm) 600x600x5.5

treccia



Size(mm) 600x600x5.5

damasco



Size(mm) 600x600x5.5

giglio



Size(mm) 600x600x5.5

arcadia



Size(mm) 600x600x5.5

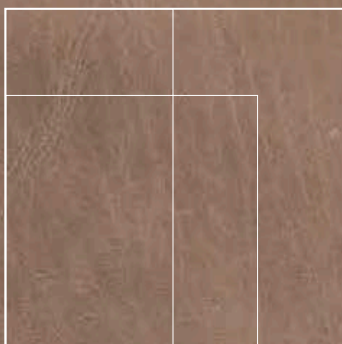


leather

07

sabbia

Tactile and sensory. Every element enlivens the senses and offers undescrivable thrills.



leather

07



Sabbia 60x60







Sabbia 60x60 / Moresco 60x60

naturale



elefante



zebra



caimano



Size(mm) 600x600x5.5

Size(mm) 600x600x5.5

Size(mm) 600x600x5.5

Size(mm) 600x600x5.5

treccia



Size(mm) 600x600x5.5

damasco



Size(mm) 600x600x5.5

giglio

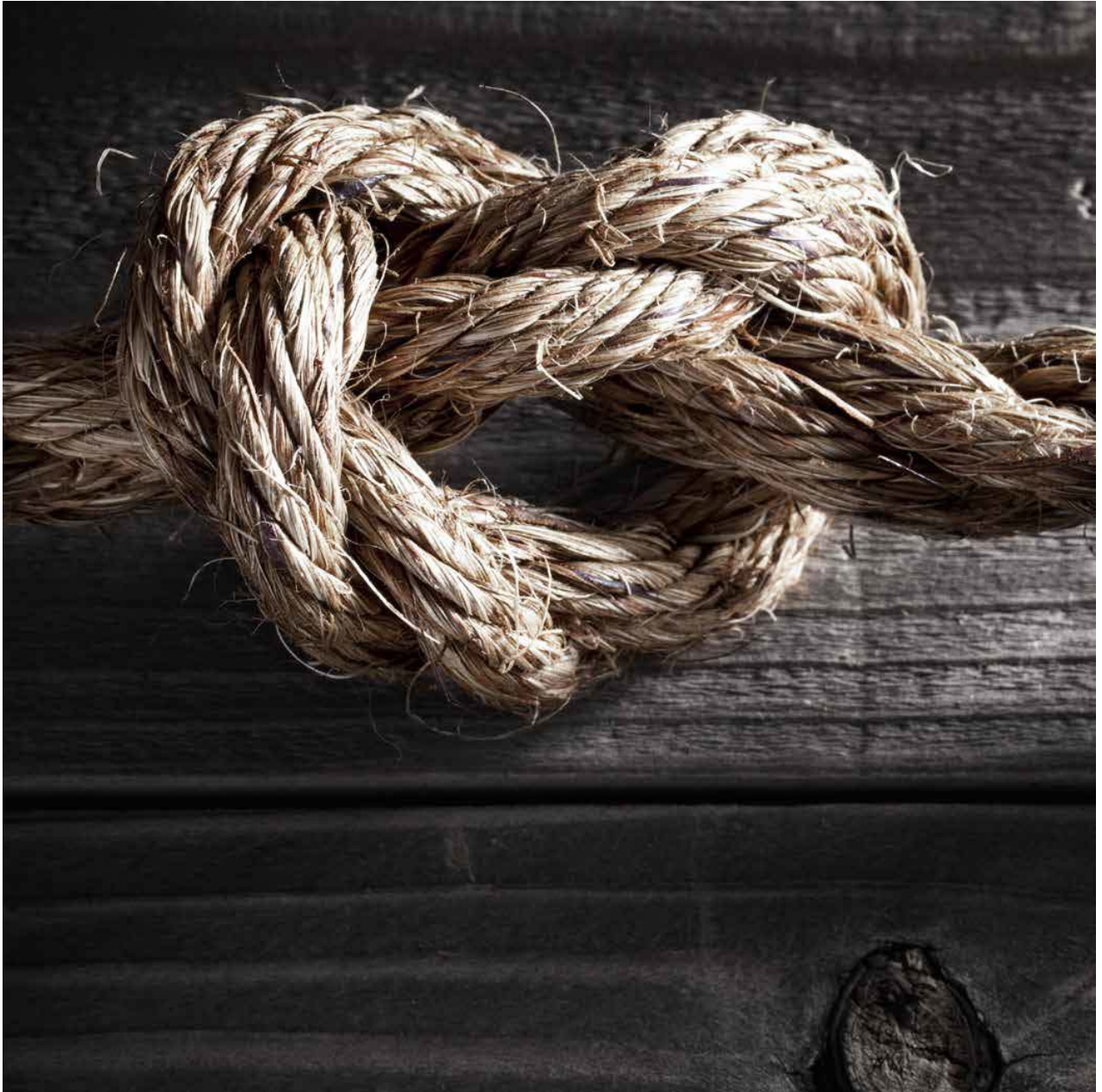


Size(mm) 600x600x5.5

arcadia



Size(mm) 600x600x5.5

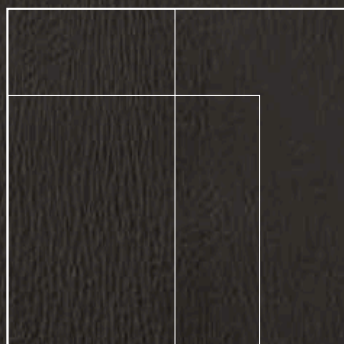


leather

08

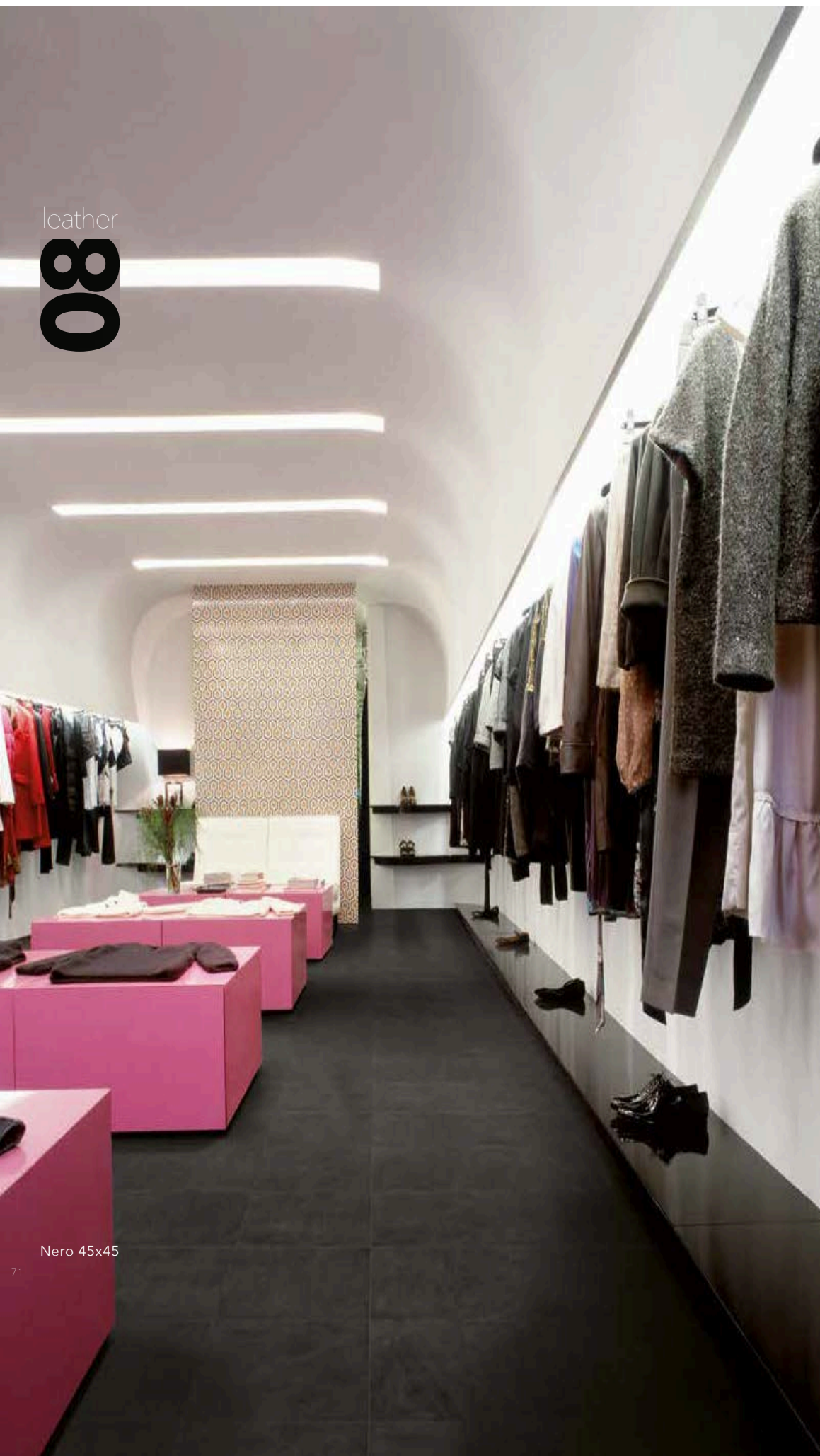
nero

Strong and durable. Every element combines aesthetics and practicality.

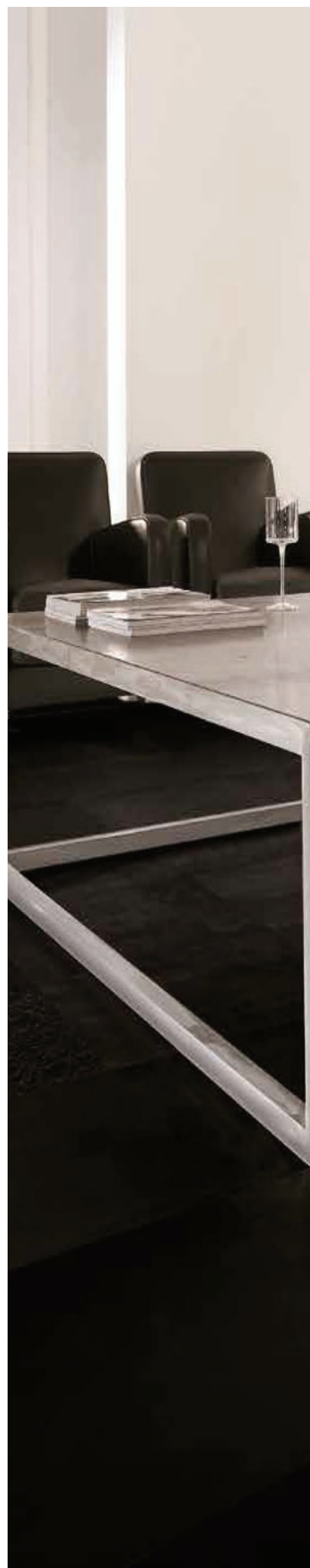


leather

08



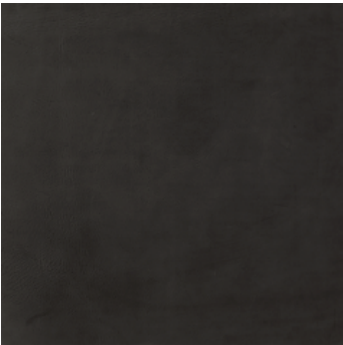
Nero 45x45





Nero 60x60 - Giglio 60x60

naturale



Size(mm) 600x600x5.5

elefante



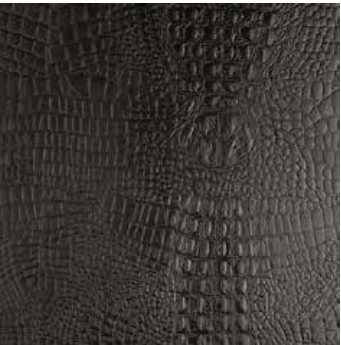
Size(mm) 600x600x5.5

zebra



Size(mm) 600x600x5.5

caimano



Size(mm) 600x600x5.5

treccia



Size(mm) 600x600x5.5

damasco



Size(mm) 600x600x5.5

giglio



Size(mm) 600x600x5.5

arcadia



Size(mm) 600x600x5.5

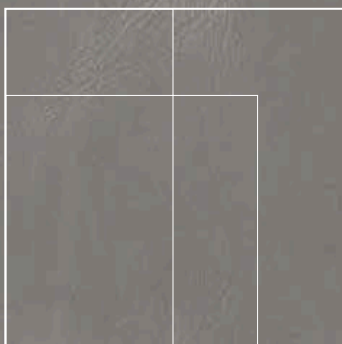


leather

09

grafite

Reassuring and silent. Every element designs spaces of padded tranquility.

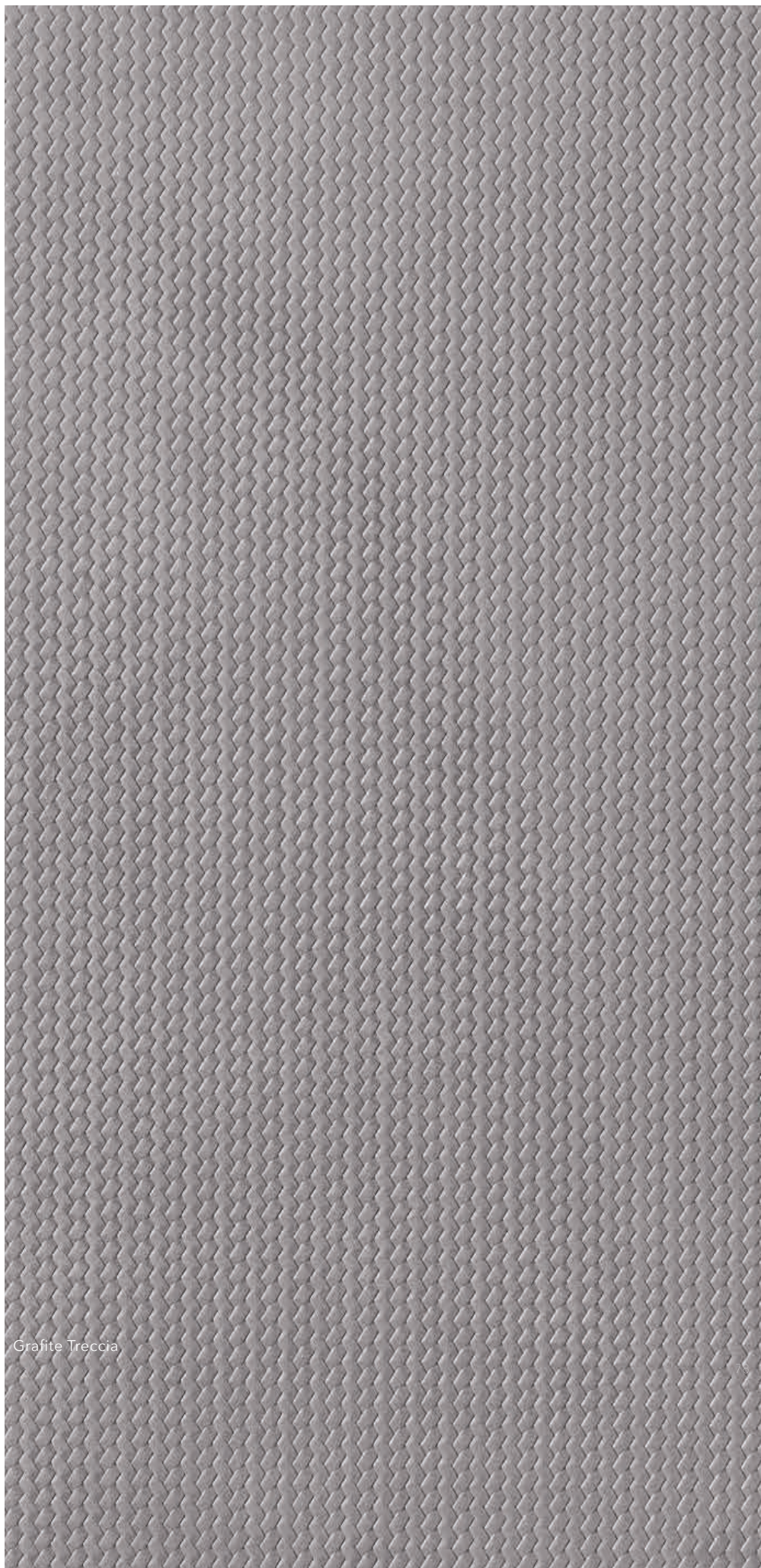


leather

09



Grafite Treccia 60x60



Grafite Treccia

naturale



Size(mm) 600x600x5.5

elefante



Size(mm) 600x600x5.5

zebra



Size(mm) 600x600x5.5

caimano



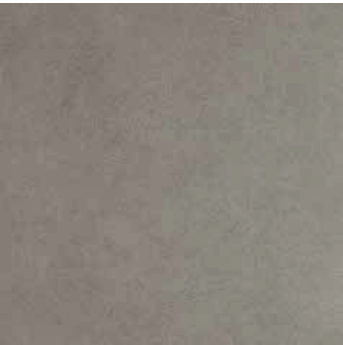
Size(mm) 600x600x5.5

treccia



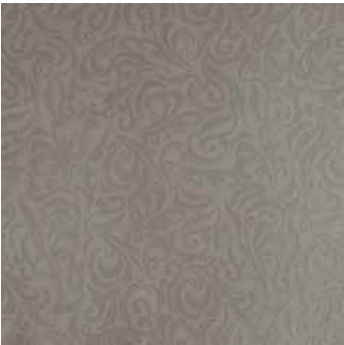
Size(mm) 600x600x5.5

damasco



Size(mm) 600x600x5.5

giglio



Size(mm) 600x600x5.5

arcadia



Size(mm) 600x600x5.5

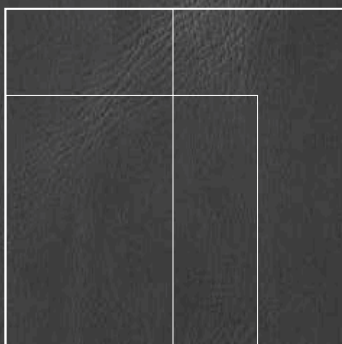


leather

10

antracite

Hand finished with expert mastery. Every element is the result of passion and experience.



leather

10



Antracite 60x60



10|antracite

naturale



Size(mm) 600x600x5.5

elefante



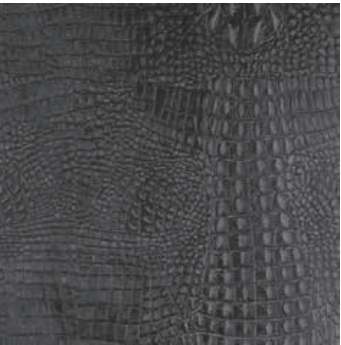
Size(mm) 600x600x5.5

zebra



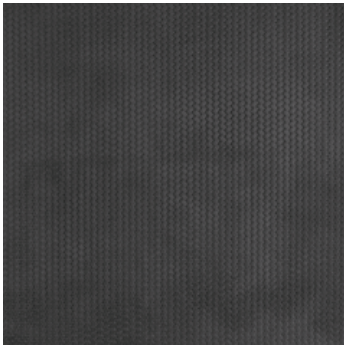
Size(mm) 600x600x5.5

caimano



Size(mm) 600x600x5.5

treccia



Size(mm) 600x600x5.5

damasco



Size(mm) 600x600x5.5

giglio

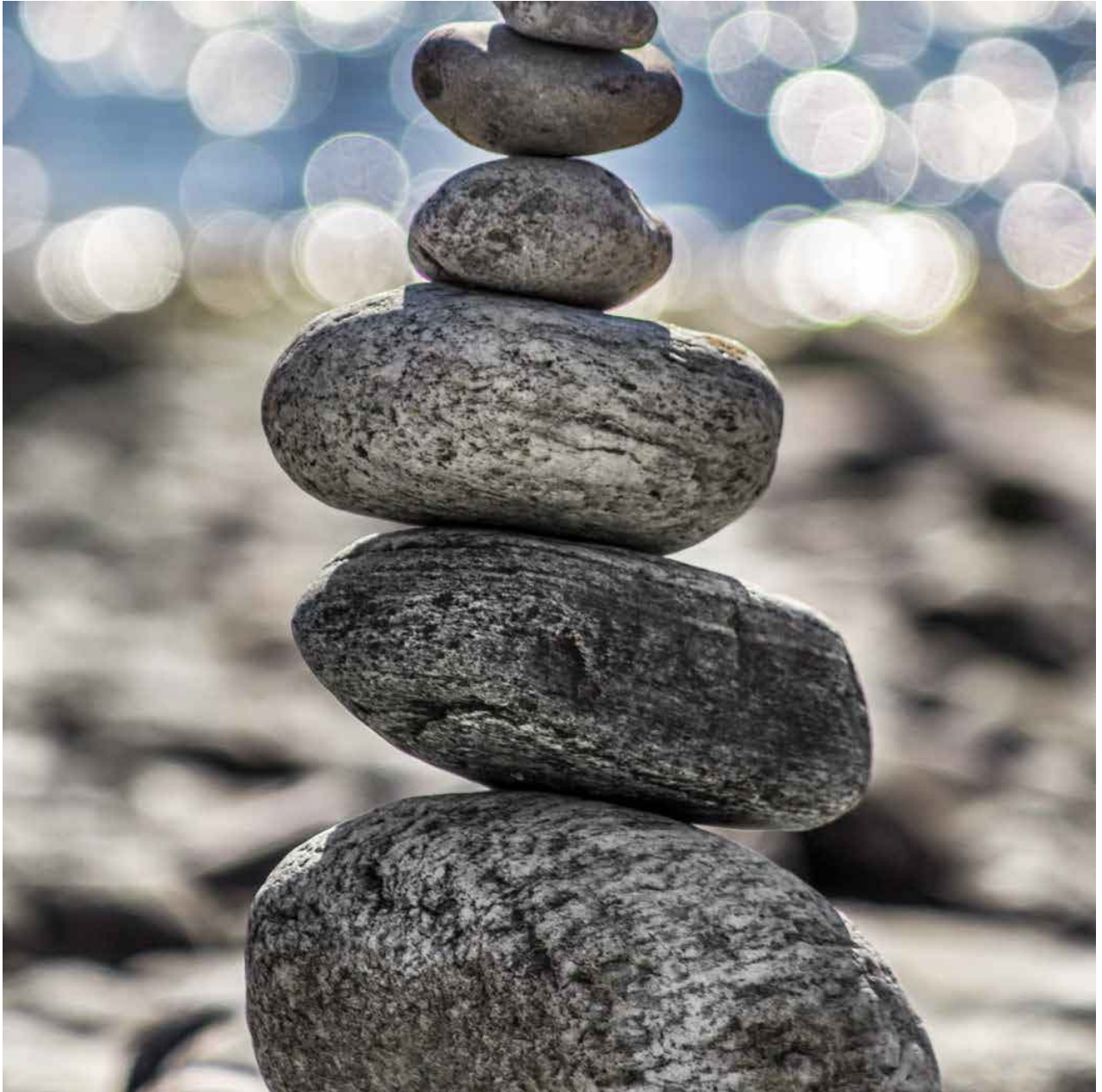


Size(mm) 600x600x5.5

arcadia



Size(mm) 600x600x5.5

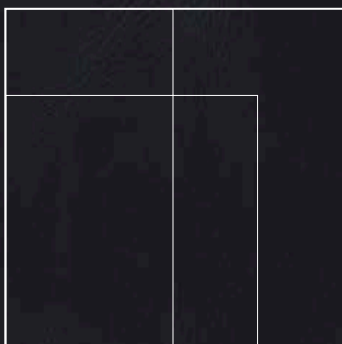


leather

11

mica

Dependable and lasting. Every element retains its natural charm over time.



leather

11



Mica 60x60



naturale



Size(mm) 600x600x5.5

elefante



Size(mm) 600x600x5.5

zebra



Size(mm) 600x600x5.5

caimano



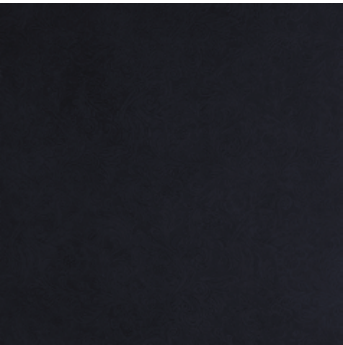
Size(mm) 600x600x5.5

treccia



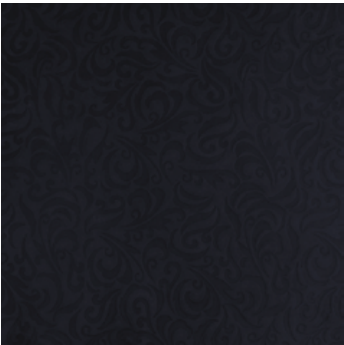
Size(mm) 600x600x5.5

damasco



Size(mm) 600x600x5.5

giglio



Size(mm) 600x600x5.5

arcadia



Size(mm) 600x600x5.5



walls

leather is our skin

Softness, warmth and natural colours characterize the aesthetic dimension of the tiles for wall coverings by Nextep Leathers, perfect for decorating residential and business spaces with a touch of design - living rooms, bedrooms, suites, spas, lounge bars, show-rooms, boutiques, receptions, offices, galleries and yacht. Whether replacing or accompanying wallpaper, stucco or ceramic tiles, they can cover bearing and dividing walls, or sections of them, in a choice from a range of décor and colours. The size of the modules let you create a variety of combinations, all matching the leather tile series for floor coverings. The range comprises tiles with plain or printed surface, boiserie recalling nostalgic atmospheres that are made in refined tone-on-tone Pride leather, and lastly mosaic tiles made naturally in leather and characterised by warm colour and texture matches.



Ambra 60x60



Moresco 60x60



Sabbia 60x60







Ambra Treccia 30x60



Tozzetti Sabbia Caimano 30x30

Boiserie Nero/Nero Caimano 30X90. Torello Nero 4x30





Ardesia Caimano 30x60





supporti**backing**

gres**porcelain**



The porcelain base guarantees a stable, firm floor and easy laying on the substrate or screed by ceramic tilers. It is therefore recommended either in new buildings or in complete renovations.

recommended applications:
FLOOR

slim**porcelain**



The slim gres base has a reduced thickness wich multiplies the tile applications. It may be glued also onto existing floors, therefore its is recommended in partial renovations. In addition, the light weight makes the slim gres tile suitable for covering walls, partitions and ceilings.

recommended applications:
FLOOR COVERINGS (0,18")
WALL COVERINGS (0,10")
CEILING (0,10")

high**presssurelamine-hpl**



The HPL base, available only for boiserie and mosaics, ensures minimum thickness for laying of wall coverings.

recommended
applications: WALL
COVERINGS

leathersurfaces

Is leather a delicate material?

No, leather has very high elasticity and resistance properties. Consider, for example, the fact that leather's high performance has generally made it the material of choice for motorbike suits, saddles, the soles of footwear, and even for car drive belts up until the early 20th century.

Can the leather surface get damaged over the years by use?

The wear that leather flooring shows can be likened to that shown by high-quality wooden flooring. Leather is a "living" material: the more foot traffic passes over it, the less visible the scars, cuts and scratches on its surface actually become. This is why Nextep Leathers surfaces last a lifetime: as the years go by, they transform and are enriched by the scars of time, acquiring a prized 'worn' feel which increases their appeal.

What rooms can leather tiles be used in?

Nextep Leathers tiles are ideal floor and wall coverings. They are used in all rooms where wooden flooring might usually be laid for example in bedroom, family room, attic, entry, dining room, lounge, home theatre room, den (leather is warm and elegant). They also can be used wherever there is the need to create a cosy, quiet space as in spas, wellness centres, hotel rooms, suites (leather is soundproofing) and finally in places open to the public like boardrooms and executive offices, boutiques, exhibition stands (leather handles foot traffic very well).

Can leather be laid around swimming pool?

Installing leather around a pool or in bathrooms is not recommended as possible contact with cleaners used to clean sanitary ware or pools can damage the colour. Contact with just water, on the other hand, will not damage the surface in any way: simply allow the leather to dry and restore its surface protection using the relevant maintenance product.

How to lay leather tiles?

The Nextep Leathers stoneware and leather tiles are laid just like any other ceramic tile: installation requires an adhesive suitable for porcelain stoneware, preferably of the elastic variety. Tiles are cut using a manual tile cutter, being careful to work on the underside of the tile. The leather is then cut with a suitable cutter, which needs to be very sharp.

Tiles have been designed to be laid butt-jointed since the leather sticks over the edge of the backing by 5/10 mm, creating an expansion joint.

Can leather be laid where underfloor heating is installed?

Yes, the leather's performance is not diminished (underfloor heating usually reaches a top temperature of 35°C). The leather surface is in no danger of coming away from the backing when heated.

leathersurfaces

How to clean the leather tiles?

Daily cleaning of the leather flooring is carried out simply by vacuuming, using the attachment/ brushes used for wooden flooring, and/or a cloth dampened with water. For a deeper clean, there is a Nextep Leathers cleaning kit, comprising the "Cleaner" and the "Protector", which allows to remove stains, if any, clean the floor deep down, nourish the leather and maintain its water repellency (recommended use: once a month for residential spaces and twice a month for public interiors). It is important to treat stains without delay.

What substances can damage the leather surface?

Harsh cleaners (such as ammonia, bleach or even pet urine) are harmful to the leather surface. On the other hand, laboratory tests have shown resistance to oil, sauce, wine and cola stains. The outcome, however, still depends on how quickly the stain is treated.

If a sharp object is dropped, producing a deep cut in the leather, can the surface be repaired?

No, the surface cannot be repaired. Nonetheless, a cut - even a deep one - will become less visible with time.

If a cigarette is dropped in the leather flooring, will it damage it?

The Nextep Leathers tile has a class 1 fire resistance rating and a cigarette is not enough to mark it. If contact with the source of heat is direct and persists, it might leave a dark stain, though cleaning cycles and the action of foot traffic will tend to make it less visible with time.

How does leather react to moisture?

Nextep leather undergoes an absorption test which reaches the value of 7 (on an international scale 0-10).

Is the colour shade of the leather constant?

Nextep Leathers surfaces are coloured based on a constant master sample. Nonetheless, one of the qualities of the leather flooring is precisely this naturally occurring mottling, which differs from one piece to the next.

e



Terms of Condition

- Pattern, Quantity, and Thickness of Nextep Leathers are following available product stock
- Price is ex factory Karawang, not including product delivery cost
- Price is for slim porcelain backing
- Price is subjected to change without prior notice

CONTACT US

SHOWROOMS & OFFICES

Jakarta

Jl. Prof. Dr. Satrio Blok C4 No.10
Kuningan Timur, Setiabudi,
Jakarta Selatan 12950,
Indonesia

P. +62 3972 2018
F. +62 3972 2028
WA +62 811 9740 387

Bali

Jl. Cargo Permai No.91
Ubung, Kec. Denpasar Utara,
Kota Denpasar,
Bali 80116, Indonesia

P. +62 361 9090 962
WA +62 811 9740 387

Medan

Komplek Pergudangan Prima
Center Blok D No.9
Jl. Gatot Subroto Km. 6,7
Medan 20118, Indonesia

WA +62 81 9740 387

Semarang

DS Coworking Siliwangi
Siliwangi Plaza
Jl. Jenderal Sudirman No.187
Semarang 50149, Indonesia

WA +62 811 9740 387

Surabaya

Jl. Embong Malang No. 67A
Kel. Kedungdoro, Kec. Tegalsari,
Surabaya 60261, Indonesia

P. +62 31 9927 7379
WA +62 811 9740 3877

Pangkep Sulawesi

Kp. Siloro, Desa Mangilu
Kec. Bungoro, Kab. Pangkep
Sulawesi Selatan 90651,
Indonesia

WA +62 811 9740 387

PRODUCTION FACILITIES

Karawang Factory

Jl. Tarum Timur No. 64
Desa Tamelang
Kecamatan Cikampek,
Karawang 41373, Indonesia

P. +62264317577
F. +62264310808

Pangkep Factory

Kp. Siloro, Desa Mangilu
Kec. Bungoro, Kab. Pangkep
Sulawesi Selatan 90651,
Indonesia

WA +62 811 9740 387

Jakarta Showroom

Jl. Prof. Dr. Satrio Blok C4 No 10
Kuningan Timur, Setiabudi
Jakarta Selatan 12950, Indonesia

P. +62 3972 2018
F. +62 3972 2028
WA +62 811 9740 387

