

CITATAH

2022
CATALOG

—
TECHNOLOGICAL
MARBLE



NEXSTONE

© Copyright 2021 Citatah

All rights reserved. No part of this publication may be reproduced, distributed or transmitted in any form or by any means, including photocopying, scanning or other electronic or mechanical methods, without the prior written permission of the publisher, except where noted.

Published January 2021, color of technological marble in this publication may vary slightly due to the printing process, desktop, and mobile preview. Final color selection should be made from stone samples.

The detailed information in this publication may be modified or updated without prior notice.

N E X S T O  E

T E C H N O L O G I C A L M A R B L E

06 - 07
WHAT IS NEXSTONE

08 - 09
WHAT DOES
TECHNOLOGICAL
MARBLE MEANS

10 - 11
WHY NEXSTONE

12 - 13
NEXSTONE
FINISHES

14 - 17
NEXSTONE PRODUCTS

18 - 19
EDGE PROFILE
SLAB SIZES

20 - 21
CARE & MAINTENANCE
PRECAUTIONS

22 - 23
TECHNICAL DATA

24 - 25
DESIGN INSPIRATION

26 - 27
TERMS & CONDITIONS

28 - 29
CONTACT US

WHAT IS NEXSTONE

Natural beauty, strengthened by engineering, Nexstone is created with a composition of 91 - 96% marble dust mixed with binders and resins to give birth to the "engineered stone," the evolution of natural stone. Born out of a worry on the over-exploitation of quarries and the large waste materials produced during the process of quarrying, Nexstone slabs are the leading edge in the innovation of modern aesthetics while placing the conservation of the environment as a primary goal. Recommended for indoor usage due to its ease of installation and maintenance, and its versatility, Nexstone is a high performance product catering to any design needs of all clients. We highly recommend utilising Nexstone for staircases, fireplaces, door and window frames, furniture tops (vanities, tabletops, kitchen tops, and others), and other indoor usages.





WHAT DOES TECHNOLOGICAL MARBLE MEANS?

Technological marble is the next stage in the evolution of building materials, it is a composite product consisting of 91 – 96% marble dust combined with resins and binders. These ingredients are then combined in an advanced process commonly known as “Engineered Stone,” whose end product is the perfect juxtaposition of the natural and engineered worlds of stone.









WHY NEXSTONE

Perfect for high usage areas, Nexstone's uniformity in both strength and design allows for ease of maintenance, while providing you with abundant design choices. Created through processes which create a hardness similar to natural stone combined with flexibility, Nexstone is highly resistant to impacts and breakages, while being lighter and easier to transport and handle versus its natural stone counterparts. Having a close to zero porosity, Nexstone benefits from having a near zero absorption of water, ensuring hygiene and cleanliness of the material, whether its used as a bathroom vanity, a kitchen countertop, or walling and flooring. Similar to natural stone, Nexstone also offers the flexibility of being finished in a variety of ways including Polished, Honed, Leather, amongst others, similarly, Nexstone can also be polished to maintain its shine, much like natural stone is.

NEXSTONE FINISHES

Polished

Smooth and flat surface with a bright and high gloss finish

Honed

Smooth and flat surface with a matte and dulled finish

Leather

Textured smooth surface to mimic the feel of leather with a soft gloss finish

Sandblasted

Textured rough surface with a matte finish

Brushed

Textured surface with a matte finishing







NX110, Polished - Backwall

NEXSTONE PRODUCTS



628 Bianco Crystal



NX033



Crystal White



PX318



NX045



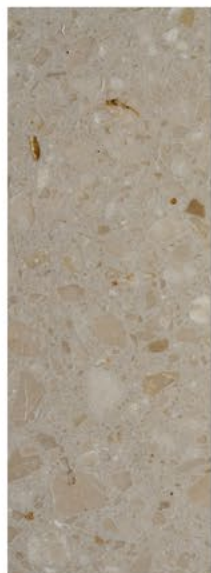
NX110



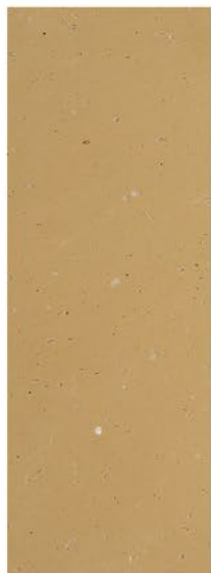
NX0632



NX0200



NX235



NX0326



NX0098



Volakas, Polished - Backwall

NEXSTONE PRODUCTS



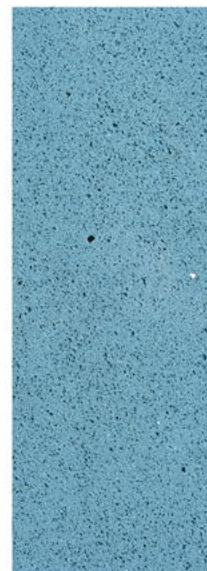
NX1025



NX380



Blue Dark



Blue Light



PX628



NX0628



Royal Fantasy



NX0005A



LE5352

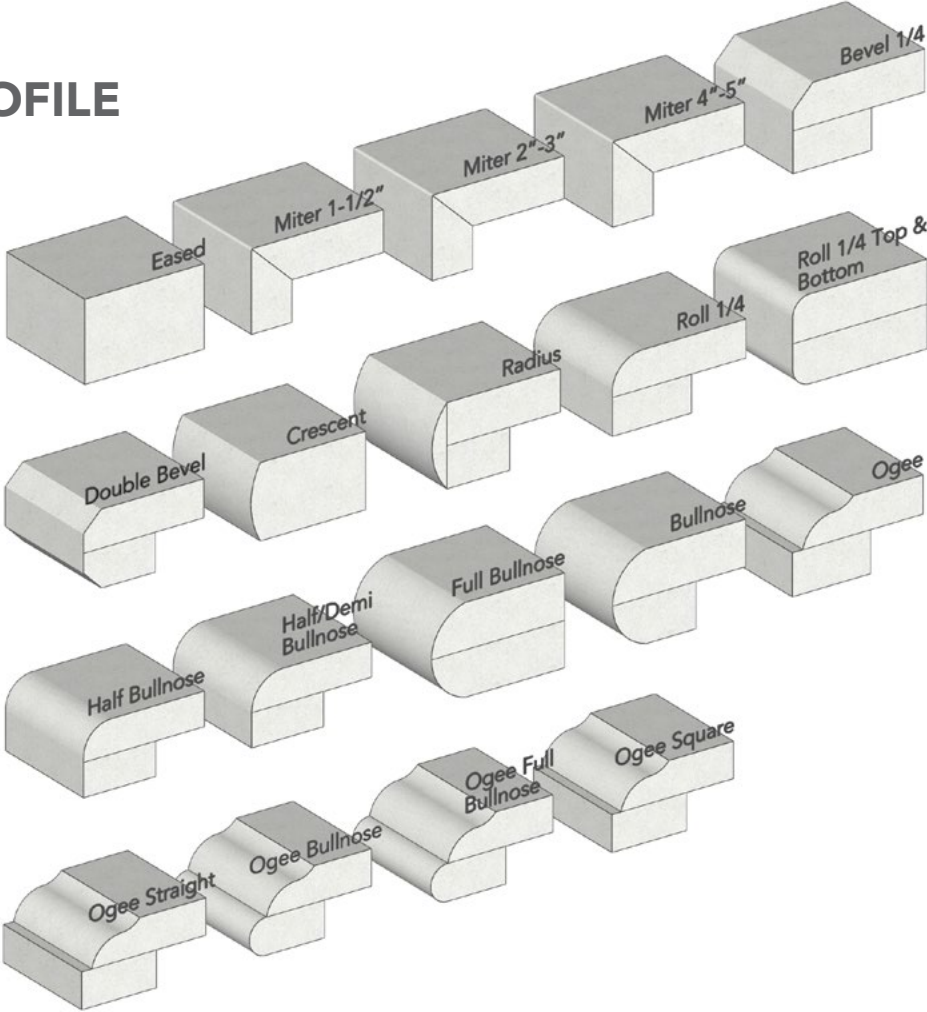


Volakas

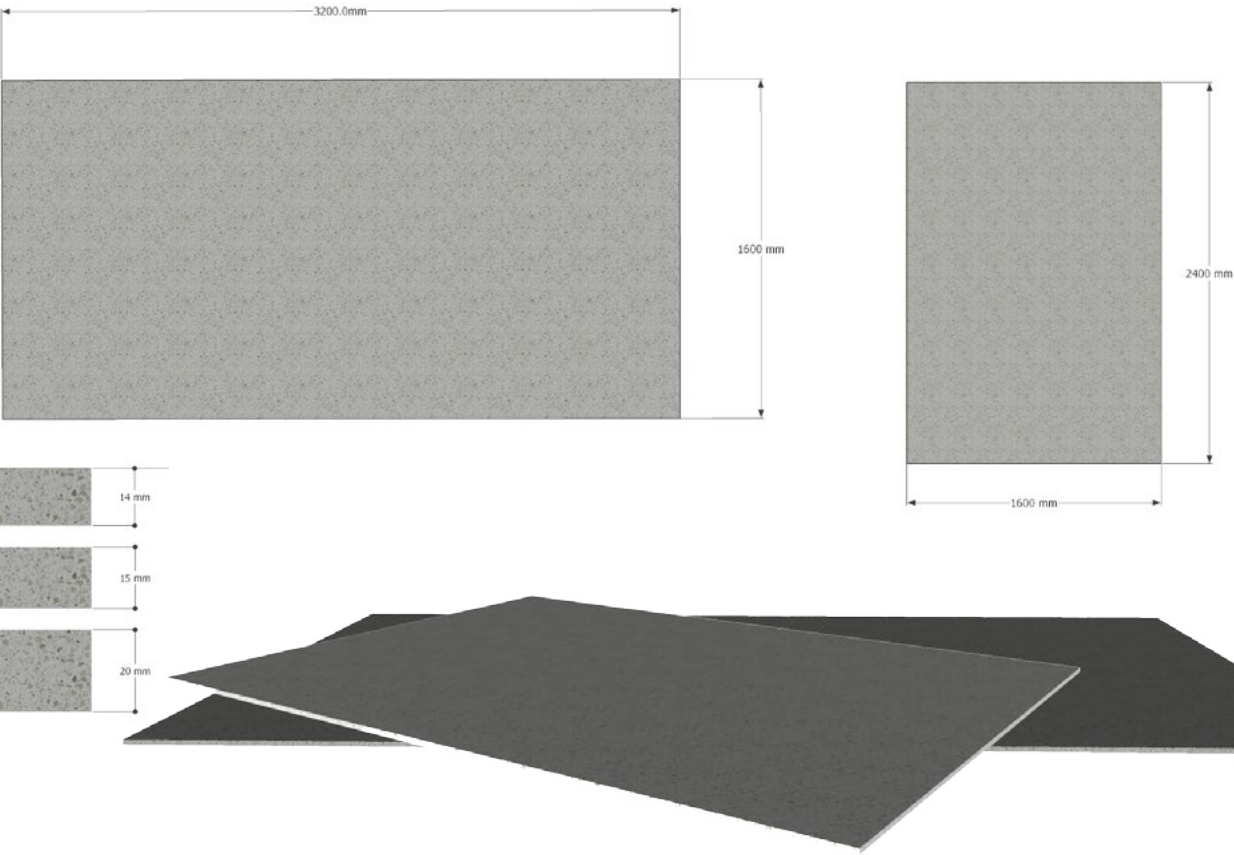


Nero Marquina Lv

EDGE PROFILE



SLAB SIZE







CARE & MAINTENANCE

1. Nexstone is a hard, nonporous surface making it easy to clean and maintain
2. Preserve original countertop finish by cleaning Nexstone using just soap and warm water or mild soap or detergents
3. Use only a non-abrasive cleaner
4. Scrape off dried out condiments and food with plastic putty knife. Blade marks can be removed with non-abrasive cleaner
5. Understand Nexstone does not require sealants or waxes to maintain its finish. Under any circumstances such products will wear off and cause the gloss to appear dull or inconsistent. However occasional polishing with soft cleaner cream will keep the surface looking its best
6. Do not expose Nexstone countertops to abrasive or strong alkaline or acid or oxidizers or the like (whether high, neutral or low ph) cleaner. Various chemicals are corrosive and or erosive. Be aware of these potential damages to your Nexstone countertops surface
7. Do not use abrasive or harsh scrub pads

PRECAUTIONS

HEAT

- Nexstone is not heat proof, chemical proof or fracture proof in any form.
- Nexstone surfaces can be damaged by sudden or rapid change in temperature especially near the edges as well as direct and or sustained heating of the top surface.
- The use of a hot pad or trivets is always recommended to prevent heating the surface of the Nexstone countertops

SCRATCHING

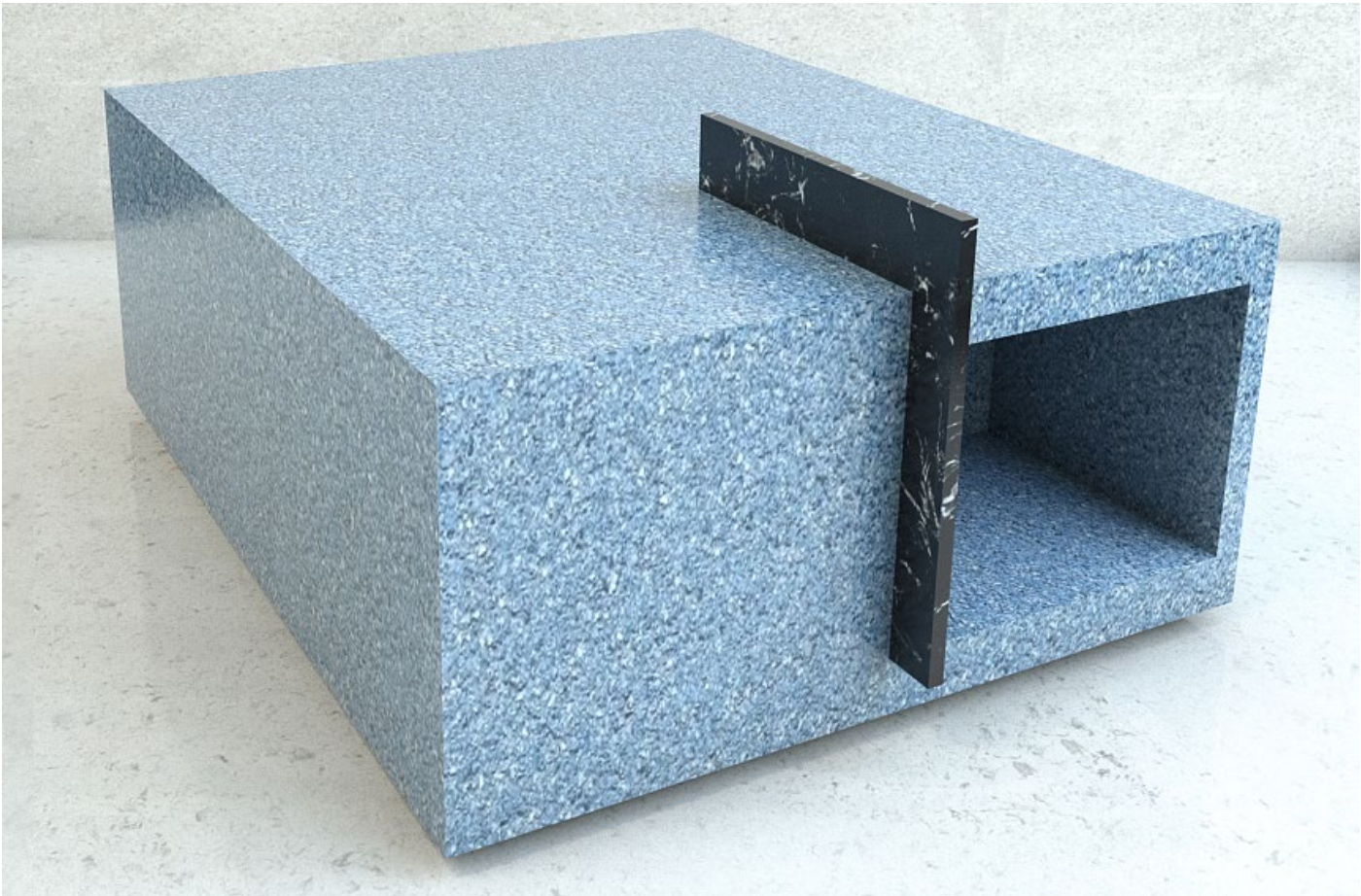
- Nexstone is durable and resistant to surface damages, however all stone surface markings are more visible on monotone colors than multicolored surfaces.
- Nexstone can be damage by force and no engineered stone is chip proof or scratch proof.

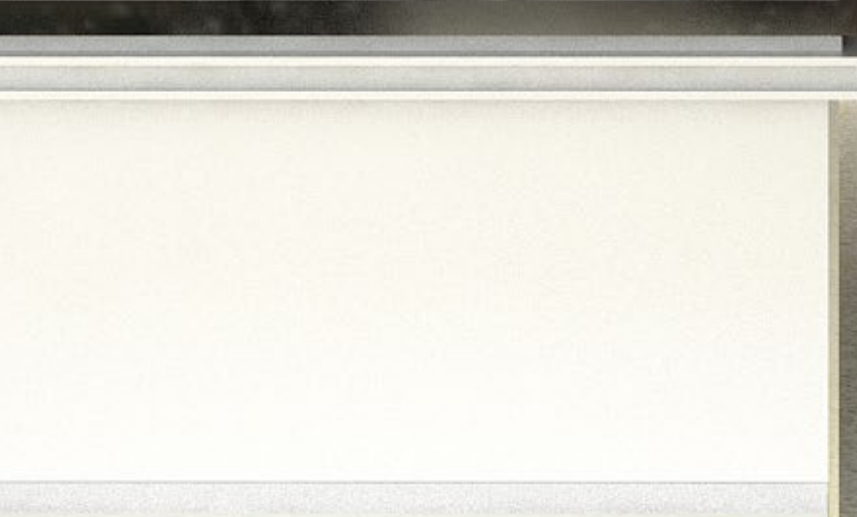
PRODUCT SPECIFICS

- Nexstone is not a seamless Product, seams are visible and may cause the product pattern and shade to change.
- Nexstone is not a structural support product, 2cm and 3cm thick slabs are for countertops and must be supported.
- Nexstone vertical and horizontal installation is optimized when walls and cabinets are properly prepared for installation; lack of which may cause poor installation and poor seam fit, or inconsistent countertop overhang and placement.

TECHNICAL DATA

Test Item		Requirements of Standard	Test Results	Test Standards
Mohs hardness		Class 3	Class 4	JC/T 908-2013 (2017) Annex A
Water absorption		<0.35%	0,07%	JC/T 908-2013 (2017) 7.6 GB /T 3810.3-2016
Flexural strength		15MPa	15.6MPa	GB/T 3810.4-2016
Compressive strength		>80MPa	118MPa	JC /T 908-2013 (2017) 7.9 GB/T 9966.1-2001
Abrasion resistance		<500mm ³	420mm ³	JC/T 908-2013 (2017) Annex C
Radion- uclides	Internal exposure index I _{ra}	Class A < 1.0	0,1	GB 6566-2010
	External exposure index I _r	Class A < 1.3	0.0 (+)	

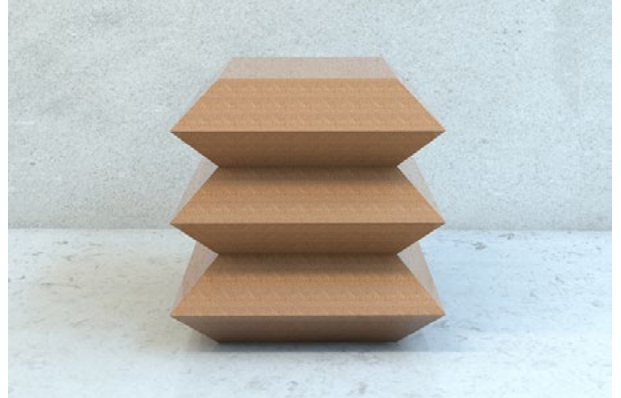








DESIGN INSPIRATION



TERMS & CONDITIONS

- Finishing, Quantity, and Thickness of Nexstone Engineered Stone are following available product stock.
- Price is ex factory Karawang, not including product delivery cost.
- Price is only for material, not including production costs.
- Price are subjected to change without prior notice.



CONTACT US

SHOWROOMS & OFFICES

Jakarta

Jl. Prof. Dr. Satrio Blok C4 No.10
Kuningan Timur, Setiabudi,
Jakarta Selatan 12950,
Indonesia

P. +62 3972 2018
F. +62 3972 2028
WA+62 811 9740 387

Bali

Jl. Cargo Permai No.91
Ubung, Kec. Denpasar Utara,
Kota Denpasar,
Bali 80116, Indonesia

P. +62 361 9090 962
WA+62 811 9740 387

Medan

Komplek Pergudangan Prima
Center Blok D No.9
Jl. Gatot Subroto Km. 6,7
Medan 20118, Indonesia

WA +62 81 9740 387

Semarang

DS Coworking Siliwangi
Siliwangi Plaza
Jl. Jenderal Sudirman No.187
Semarang 50149, Indonesia

WA+62 811 9740 387

Surabaya

Jl. Embong Malang No. 67A
Kel. Kedungdoro, Kec. Tegalsari,
Surabaya 60261, Indonesia

P. +62 31 9927 7379
WA+62 811 9740 3877

Pangkep Sulawesi

Kp. Siloro, Desa Mangilu
Kec. Bungoro, Kab. Pangkep
Sulawesi Selatan 90651,
Indonesia

WA +62 811 9740 387

PRODUCTION FACILITIES

Karawang Factory

Jl.Tarum Timur No. 64
Desa Tamelang
Kecamatan Cikampek,
Karawang 41373, Indonesia

P. +62264317577
F. +62264310808

Pangkep Factory

Kp. Siloro, Desa Mangilu
Kec. Bungoro, Kab. Pangkep
Sulawesi Selatan 90651,
Indonesia

WA +62 811 9740 387

Jakarta Showroom

Jl. Prof. Dr. Satrio Blok C4 No 10
Kuningan Timur, Setiabudi
Jakarta Selatan 12950, Indonesia

P. +62 3972 2018
F. +62 3972 2028
WA +62 811 9740 387

