

CITATAH

beyond stone

neoScape

Ecological Stone

ADVANTAGES



Nonporous



Durable



**Easy Care &
Maintenance**



**Slip
Resistance**



**Stain
Resistance**



**Scratch
Resistance**



**Heat
Resistance**



**10 Year
Warranty**



**Ease of
Installation**

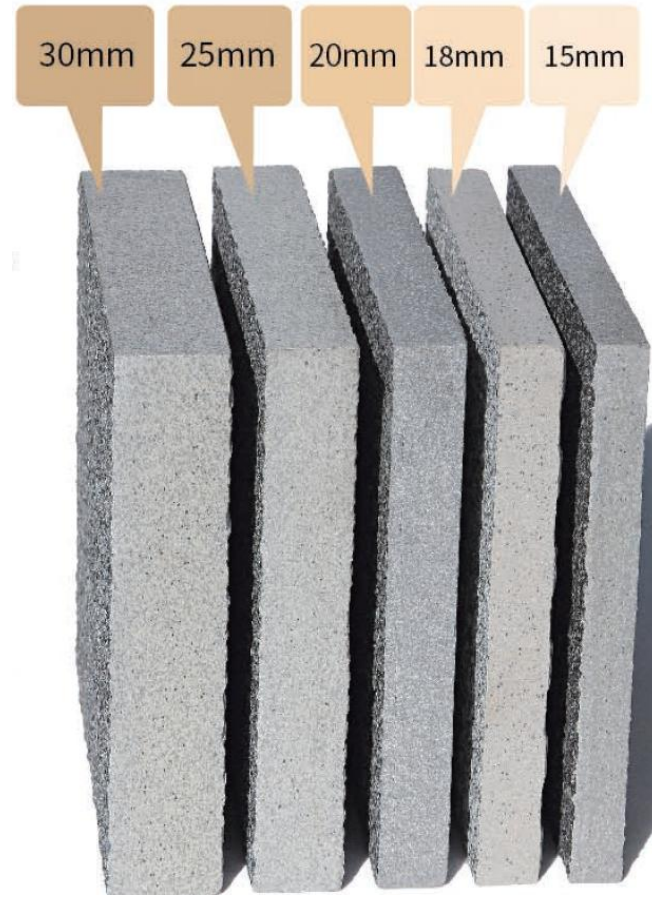
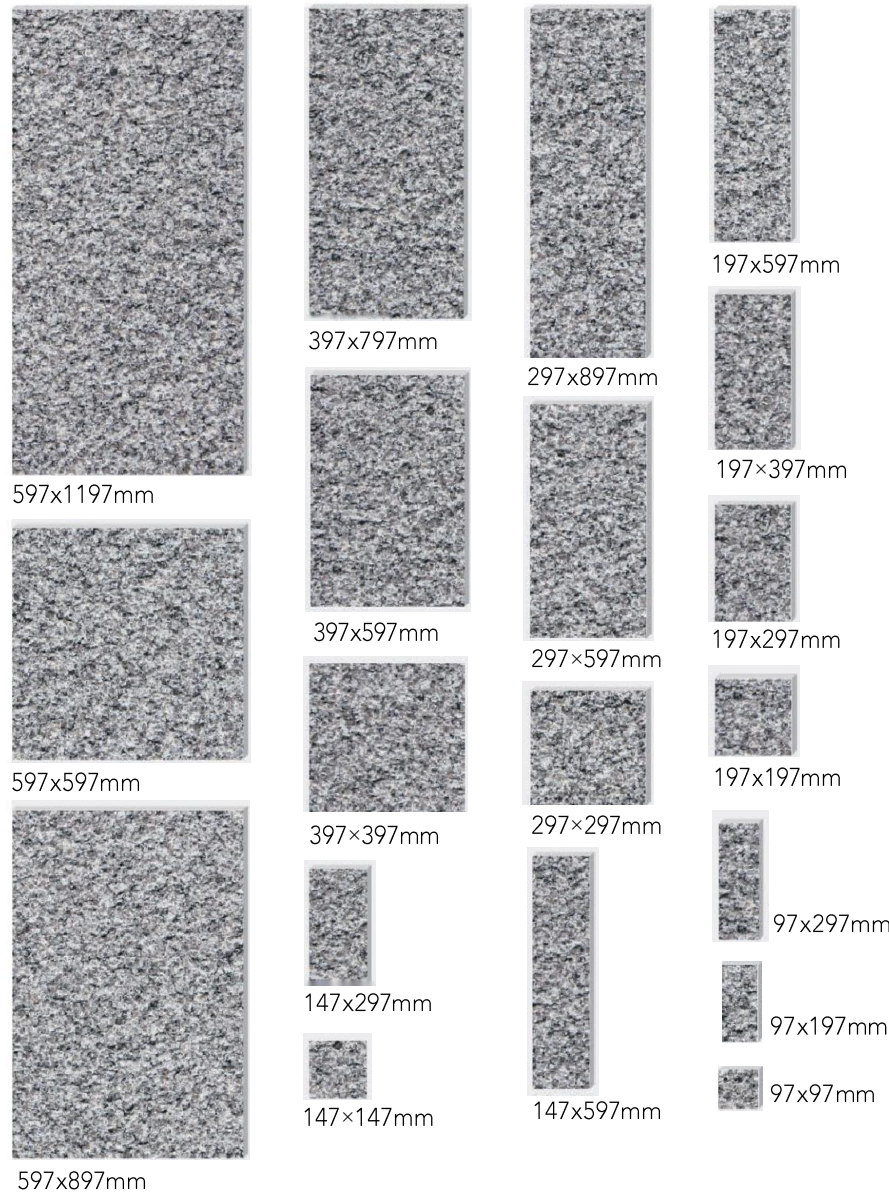


**Environmentally
Friendly**

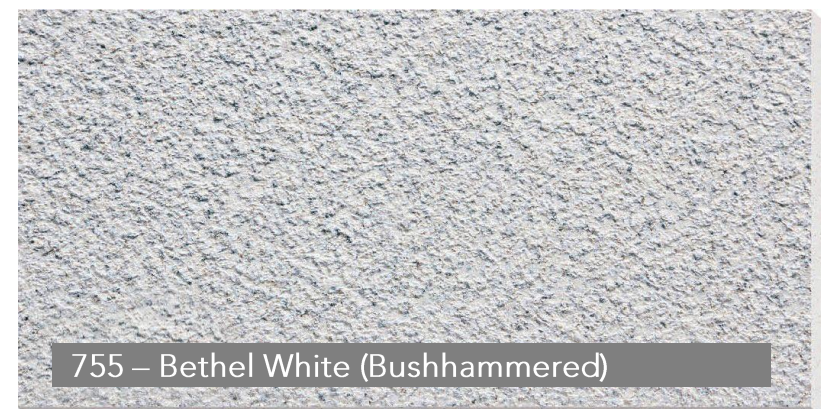
neoScape
Ecological Stone

SERIES 7

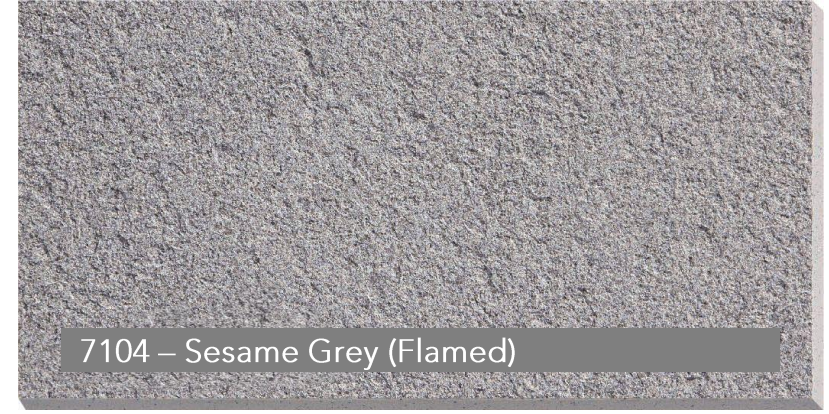
PRODUCT SIZE AND THICKNESS (SERIES 7)



SERIES 7 STANDARD COLOR



SERIES 7 STANDARD COLOR



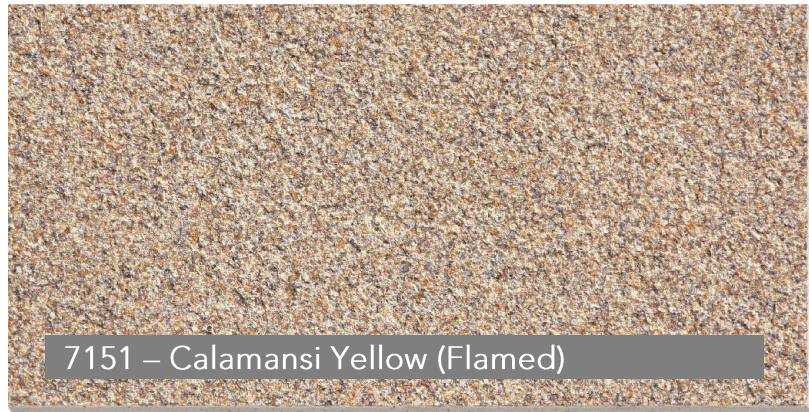
SERIES 7 NON STANDARD COLOR

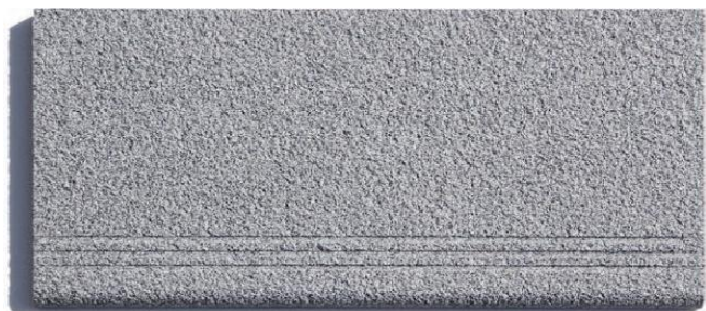


SERIES 7 NON STANDARD COLOR



SERIES 7 NON STANDARD COLOR





7TB7H3634

Size: 297x597mm



7ZJ7H23



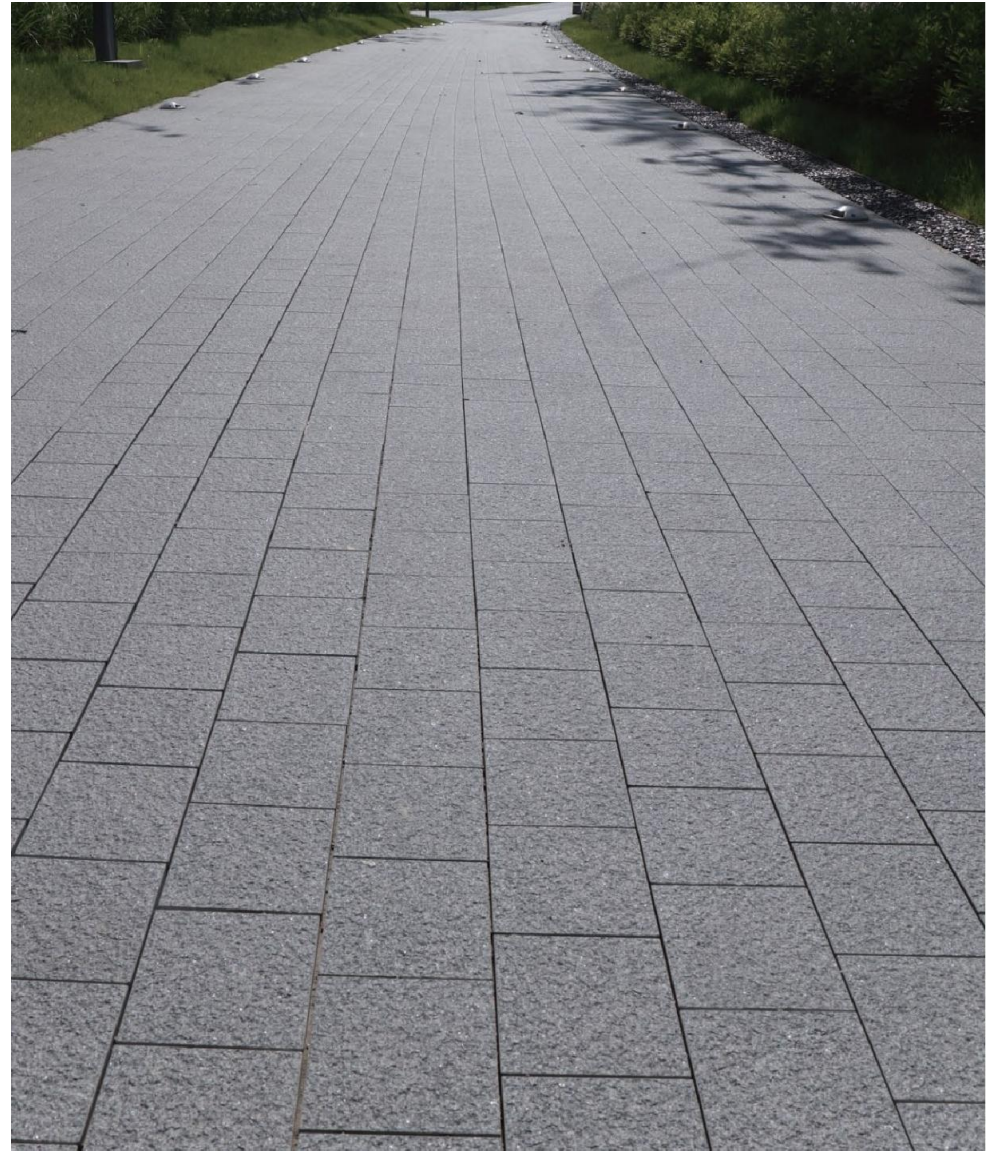
7ZJ7H34



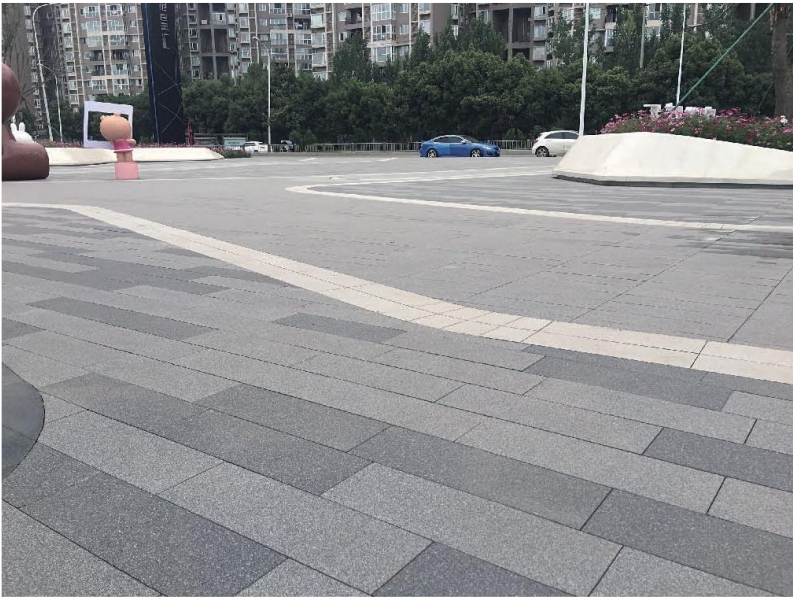
ECOLOGICAL COBBLE STONE

Standard Size 100x100mm 146x146mm; Thickness 20mm





7YS7L3623 – Antique Grey



731 – Sesame White (Bushhammered)



755 – Bethel White (Bushhammered)



723 – Sesame Black (Bushhammered)



734 – Sesame Grey
Bushhammered



719 – Nero Tigrato

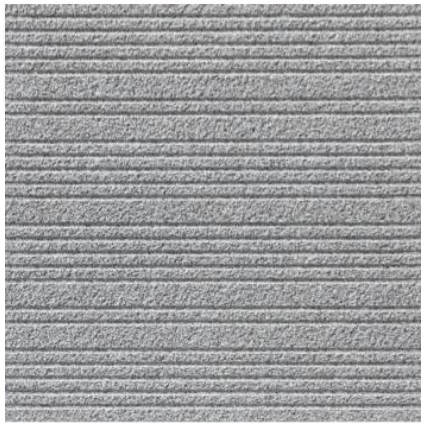
723 – Sesame Black

731 – Sesame White

Flamed

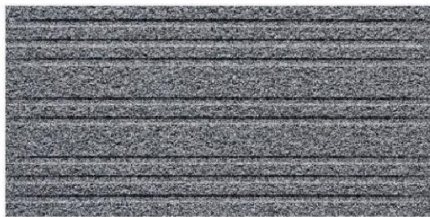
Bushhammered

Bushhammered



7PD7H6634

Size: 597x597x18mm



7PD7H2416

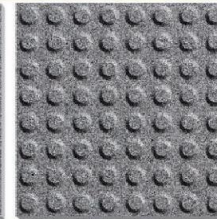
Size: 197x397x18mm



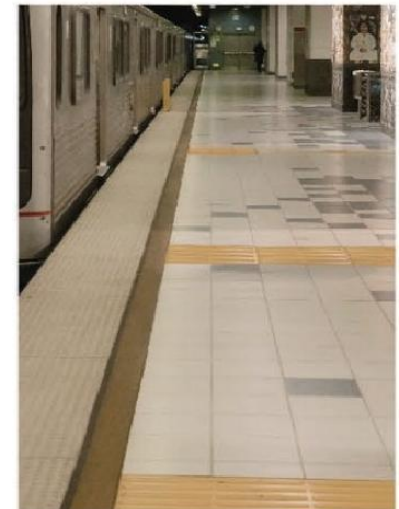
397x397mm



7M7H4423T



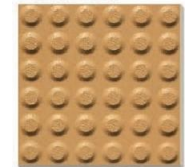
7M7H4423D



297x297mm



7MTH3301



7MTH3301

297x297mm



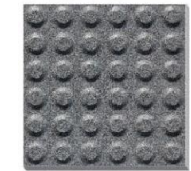
77MH3331T



77MH3331D

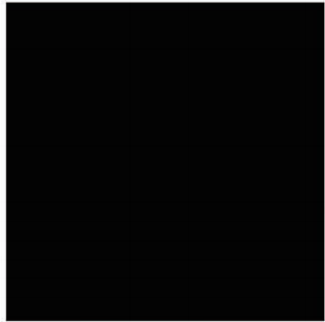


7MH3302T



7MH3302D

WATER FEATURE BRICKS



742G – Galaxy
(Polished)



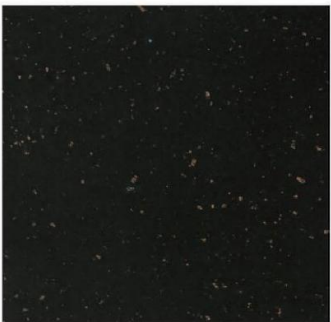
Special Finish



742 – Galaxy Black F



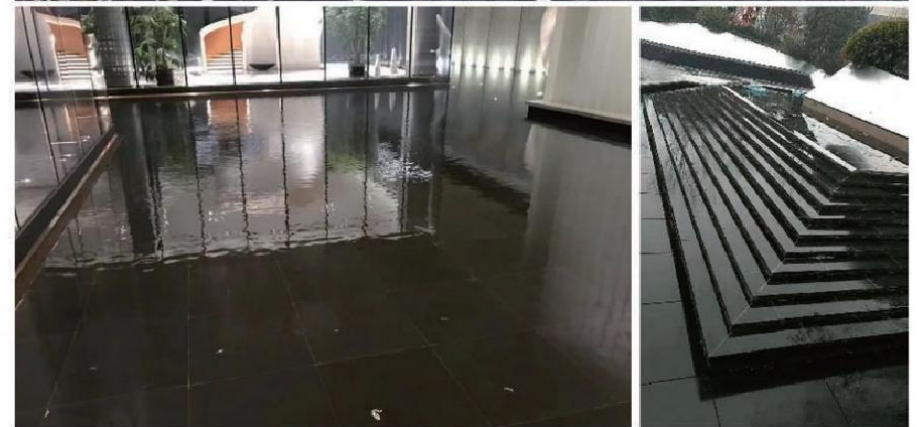
Special Finish



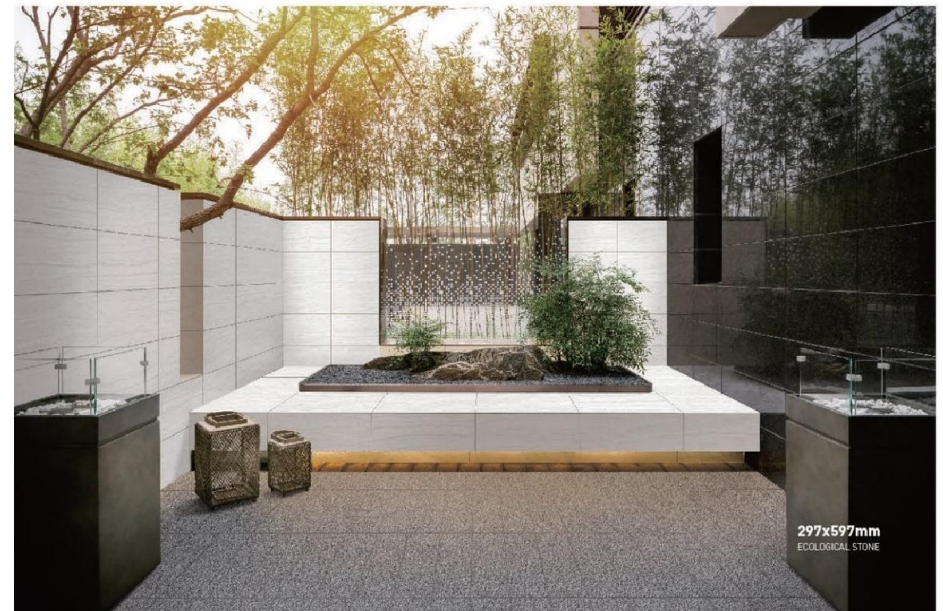
742S – Galaxy Black



Special Finish



CURTAIN WALL



7PM03 – Portus Beige



7PM04 – Silver Wave



7PM06 – Chinese Serpeggiante

TECHNICAL PARAMETERS

Category		15mm	18mm	20mm	25mm	30mm	International Standard
Product Water Absorption Rate		$E \leq 0.2\%$	$E \leq 0.15\%$	$E \leq 0.1\%$	$E \leq 0.1\%$	$E \leq 0.08\%$	$E \leq 0.5\%$
Product Fracture Modulus (Mpa)		$R \geq 44$	$R \geq 50$	$R \geq 50$	$R \geq 50$	$R \geq 52$	$R \geq 35$
Product Breaking Strength (N)		$S \geq 5300$	$S \geq 8900$	$S \geq 12200$	$S \geq 18000$	$S \geq 32240$	$S \geq 1300$
Anti-Slip Rating	>35°	R13	R13	R13	R13	R13	
Glazed Tile Surface Wear Resistance (Grinding Speed/Level Of Visible Wear)		6000 rpm/4 levels	6000 rpm/4 levels	6000 rpm/4 levels	6000 rpm/4 levels	6000 rpm/4 levels	
Tile Friction Coefficient	Dry Method	0.8–0.82	0.8–0.82	0.8–0.82	0.8–0.82	0.8–0.82	Single value ≥ 0.5
Tile Friction Coefficient	Wet Method	0.73–0.75	0.73–0.75	0.73–0.75	0.73–0.75	0.73–0.75	Single value ≥ 0.5

CERTIFICATE



绿色建材产品认证证书

证书编号：CQM22CGP130208012148

neoScape
Ecological Stone

SERIES 3

PRODUCT SIZE AND THICKNESS (SERIES 3)



600x1200mm



600x900mm



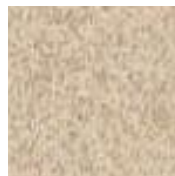
600x600mm



300x900mm



300x600mm



300x300
mm



200x400mm



200x200mm

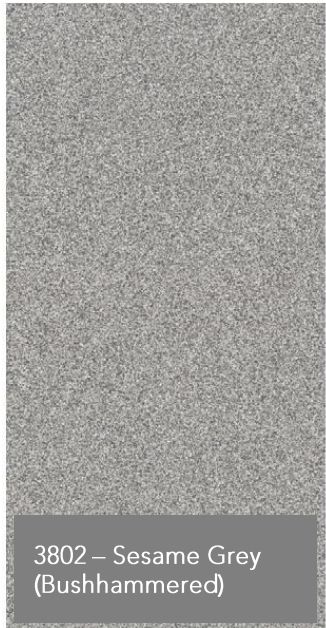


200x600mm

Thickness (mm): 12/15/18/20/25/30



3811 – Sesame White
(Bushhammered)



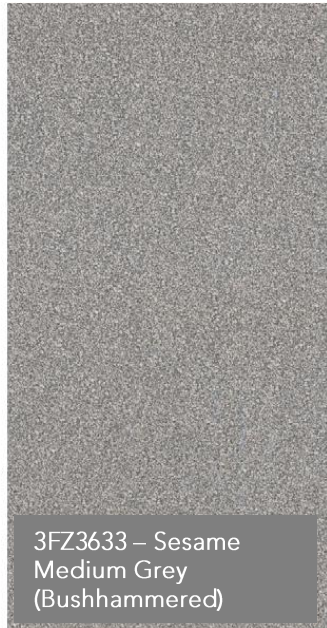
3802 – Sesame Grey
(Bushhammered)



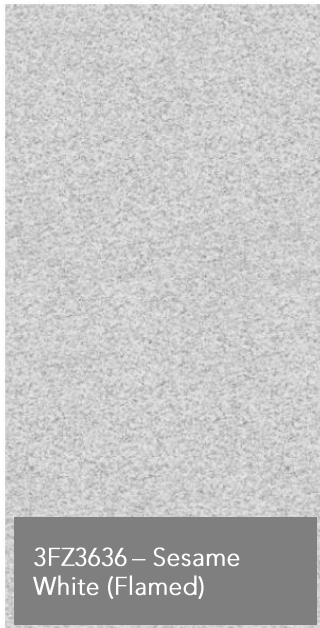
3FZ3635 – Rustic
Yellow
(Bushhammered)



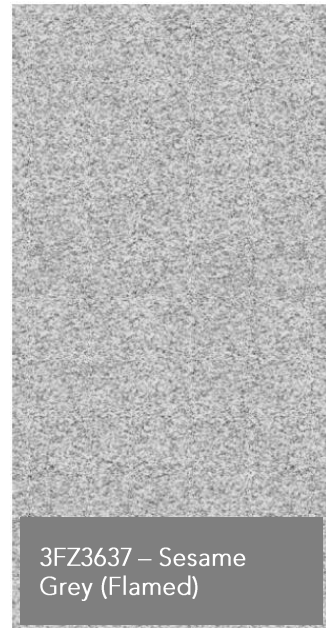
3FZ3634 – Sesame
Black (Bushhammered)



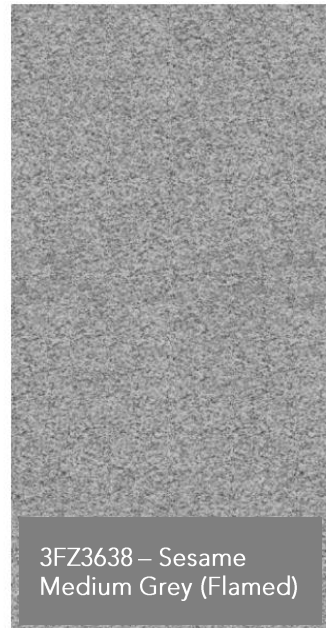
3FZ3633 – Sesame
Medium Grey
(Bushhammered)



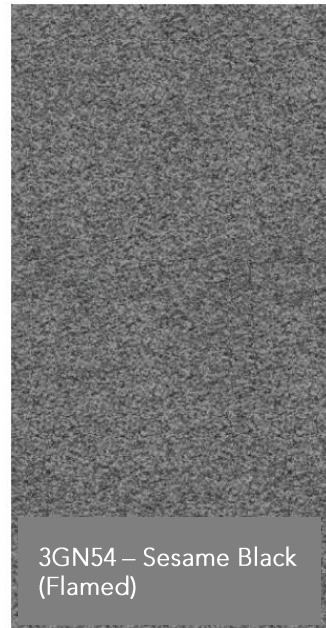
3FZ3636 – Sesame
White (Flamed)



3FZ3637 – Sesame
Grey (Flamed)



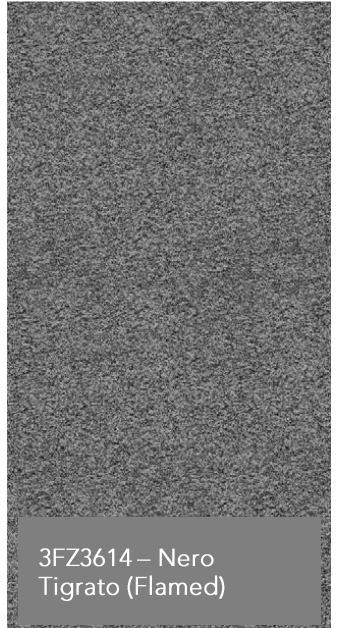
3FZ3638 – Sesame
Medium Grey (Flamed)



3GN54 – Sesame Black
(Flamed)

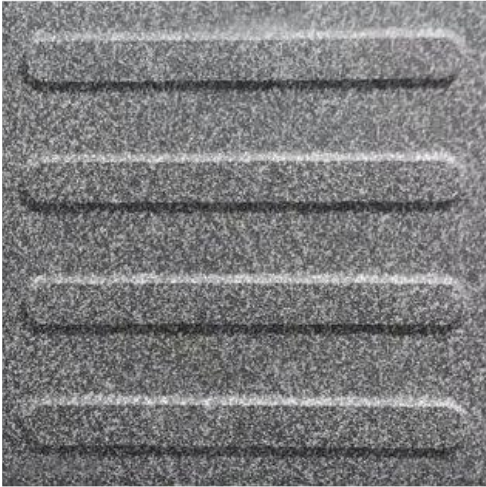


3FZ3610 – Royal Red
(Bushhammered)

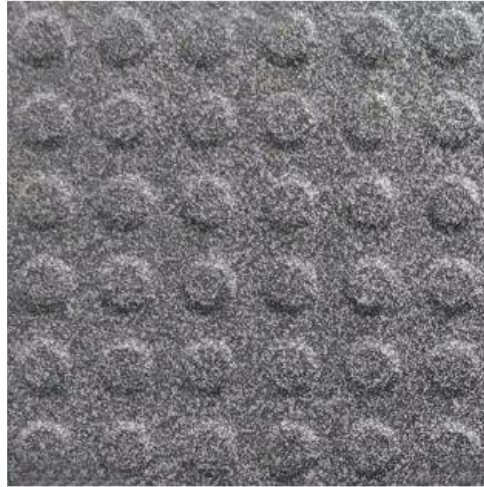


3FZ3614 – Nero
Tigrato (Flamed)

TACTILE GUIDING BLOCK



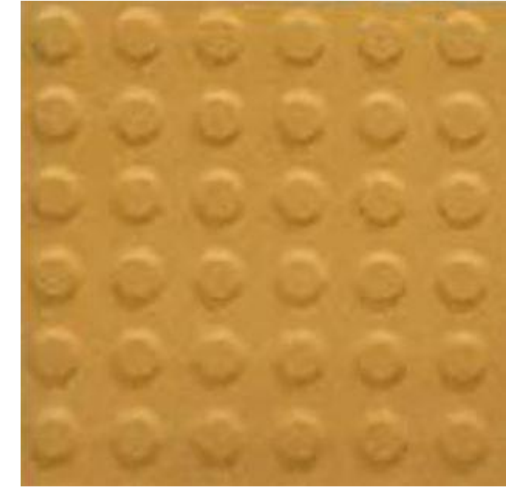
3MDT3312
Sesame Black Guide Bricks



3MDD3312
Sesame Black Stop Bricks



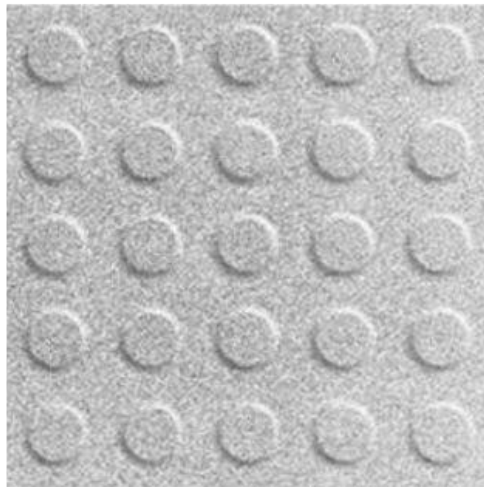
3MDT3303-20
Pure Yellow Guide Bricks



3MDD3303-20
Pure Yellow Stop Bricks



3MDT3302
Sesame Grey Guide Bricks



3MDD3302
Sesame Grey Stop Bricks



3MDT3304-20
Pure Grey Guide Bricks



3MDD3304-20
Pure Grey Stop Bricks

400x400x18mm / 300x300x18mm



中国绿色建材产品认证证书

CERTIFICATE FOR CHINA GREEN BUILDING MATERIAL PRODUCT CERTIFICATION

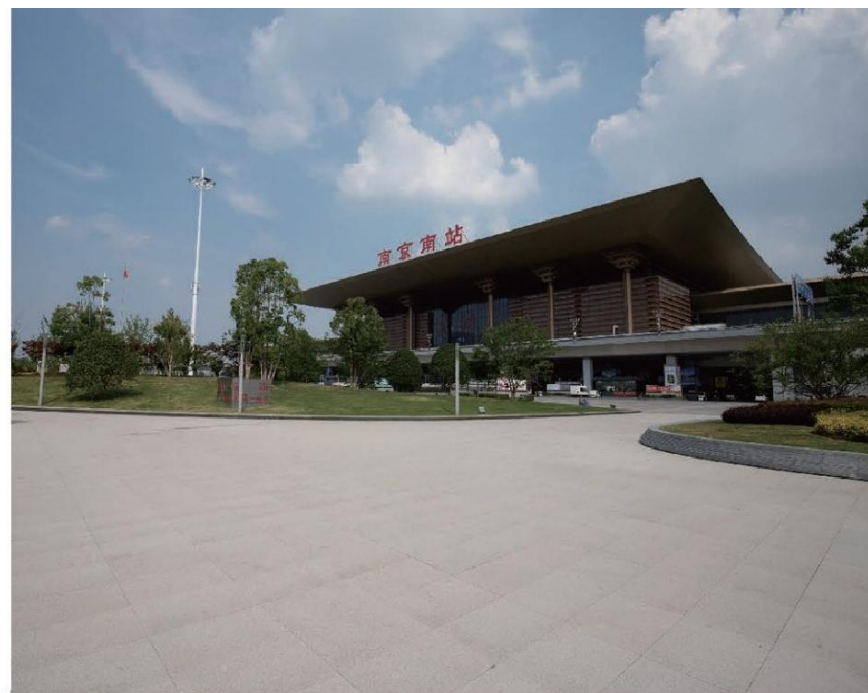
证书编号: 02524CGP1316056-1



PROJECT REFERENCES



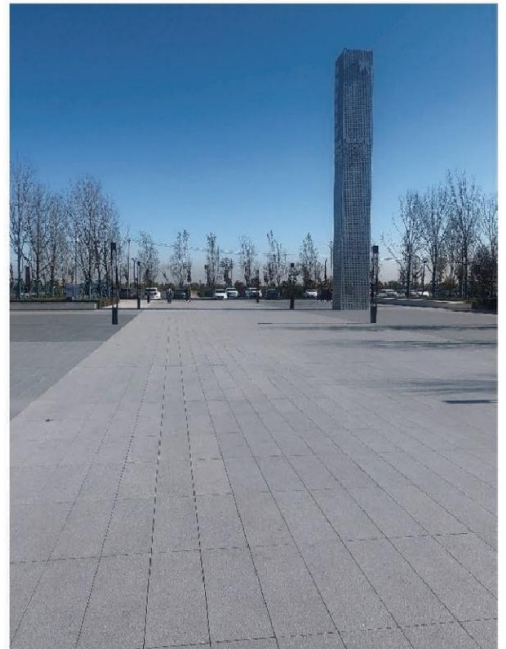
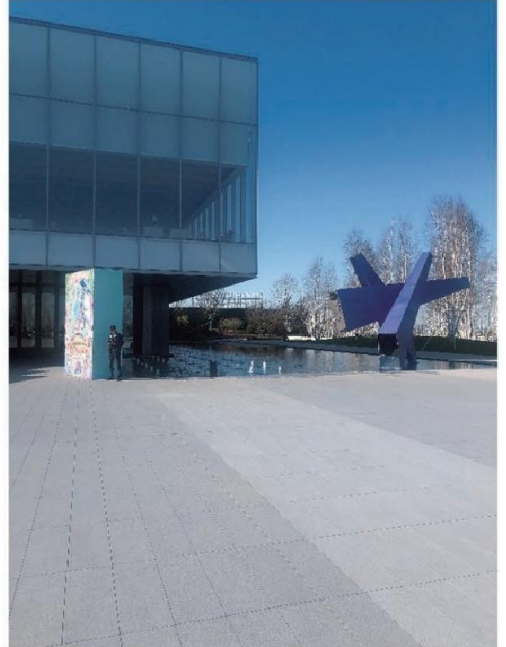




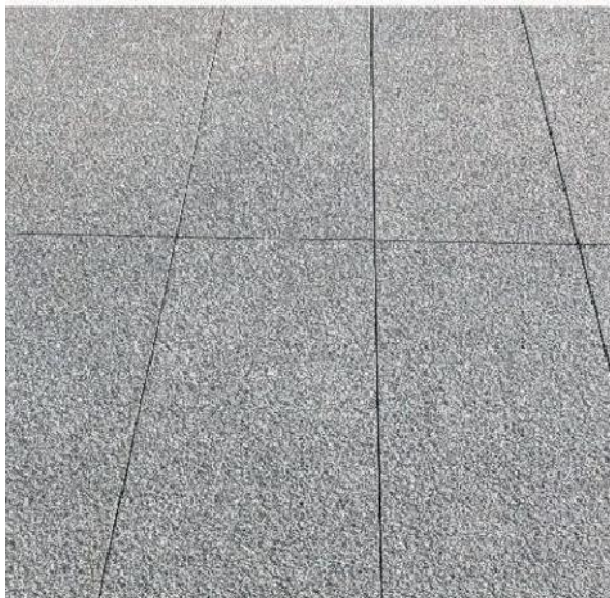


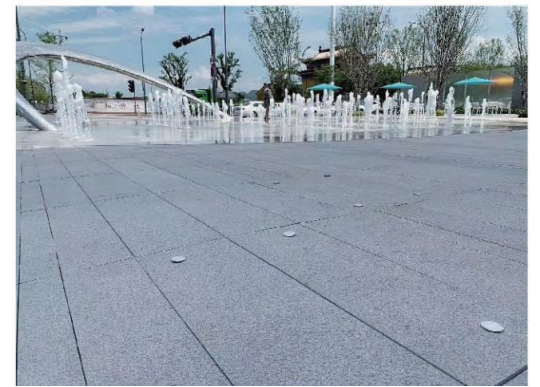
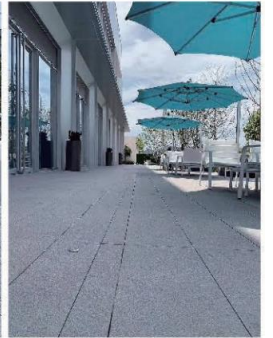
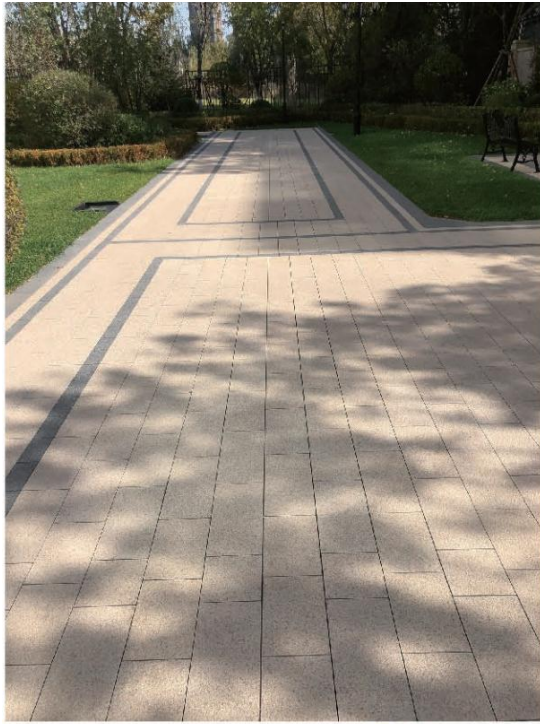


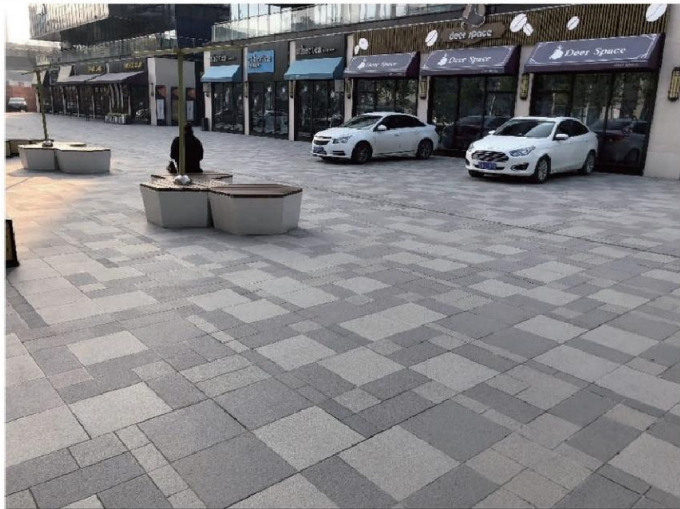


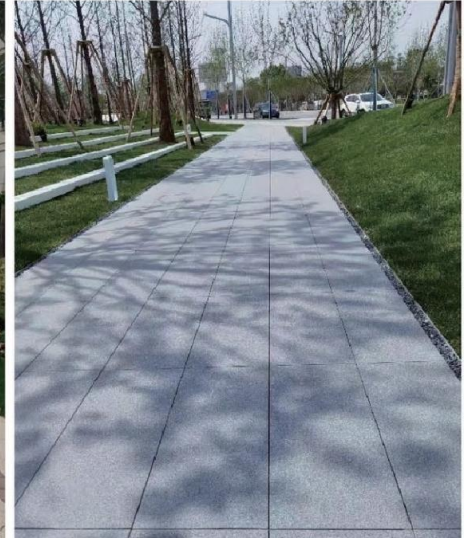
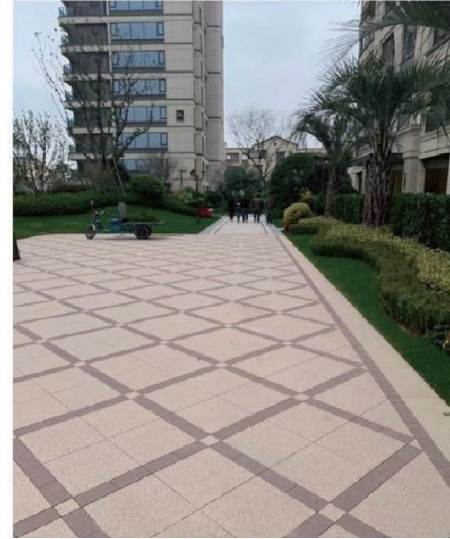
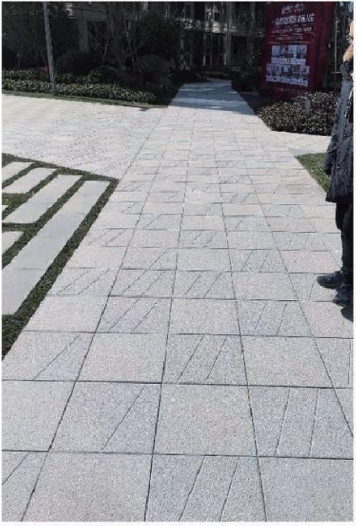


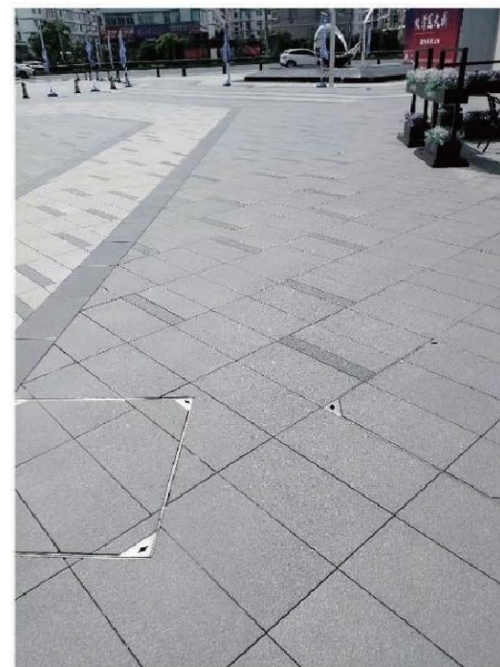
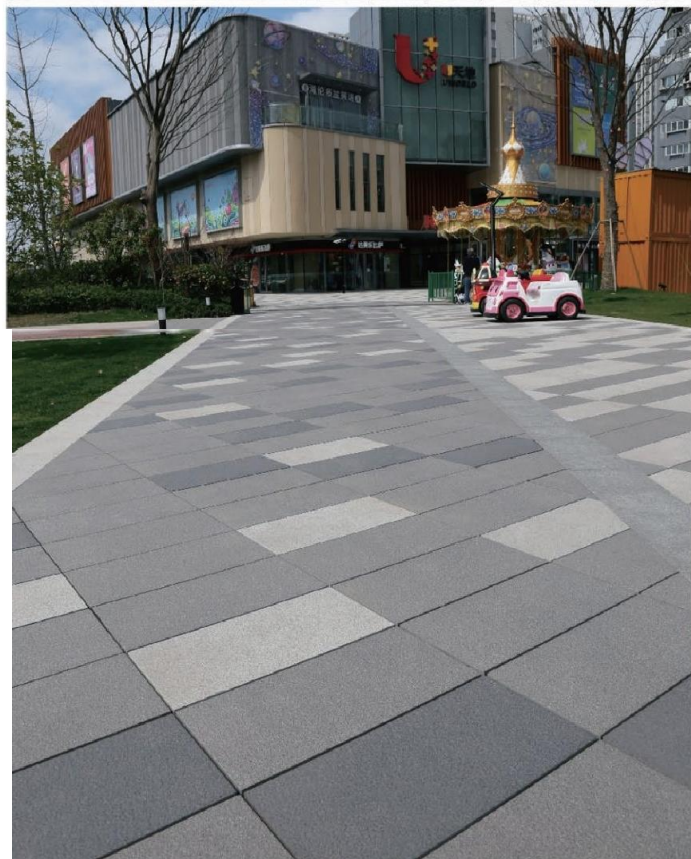
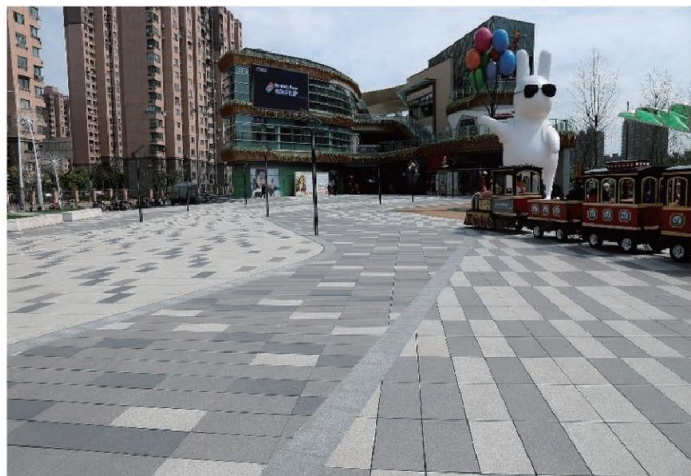


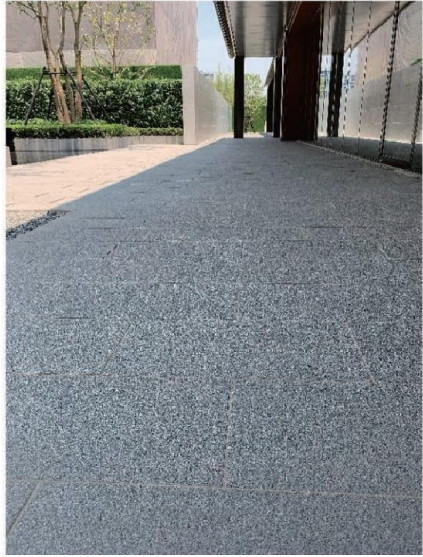


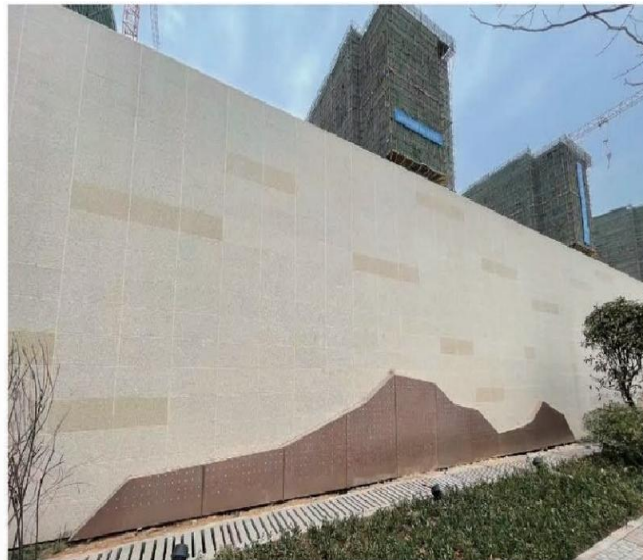
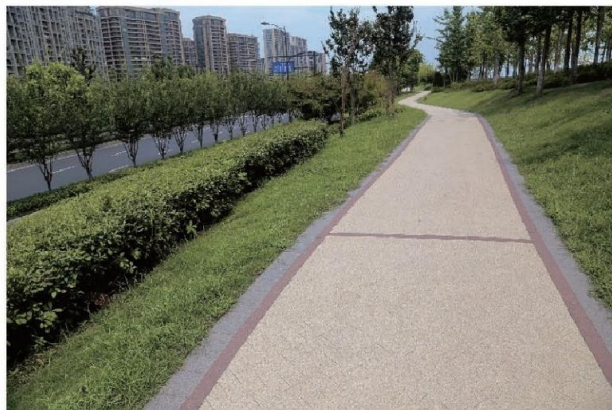








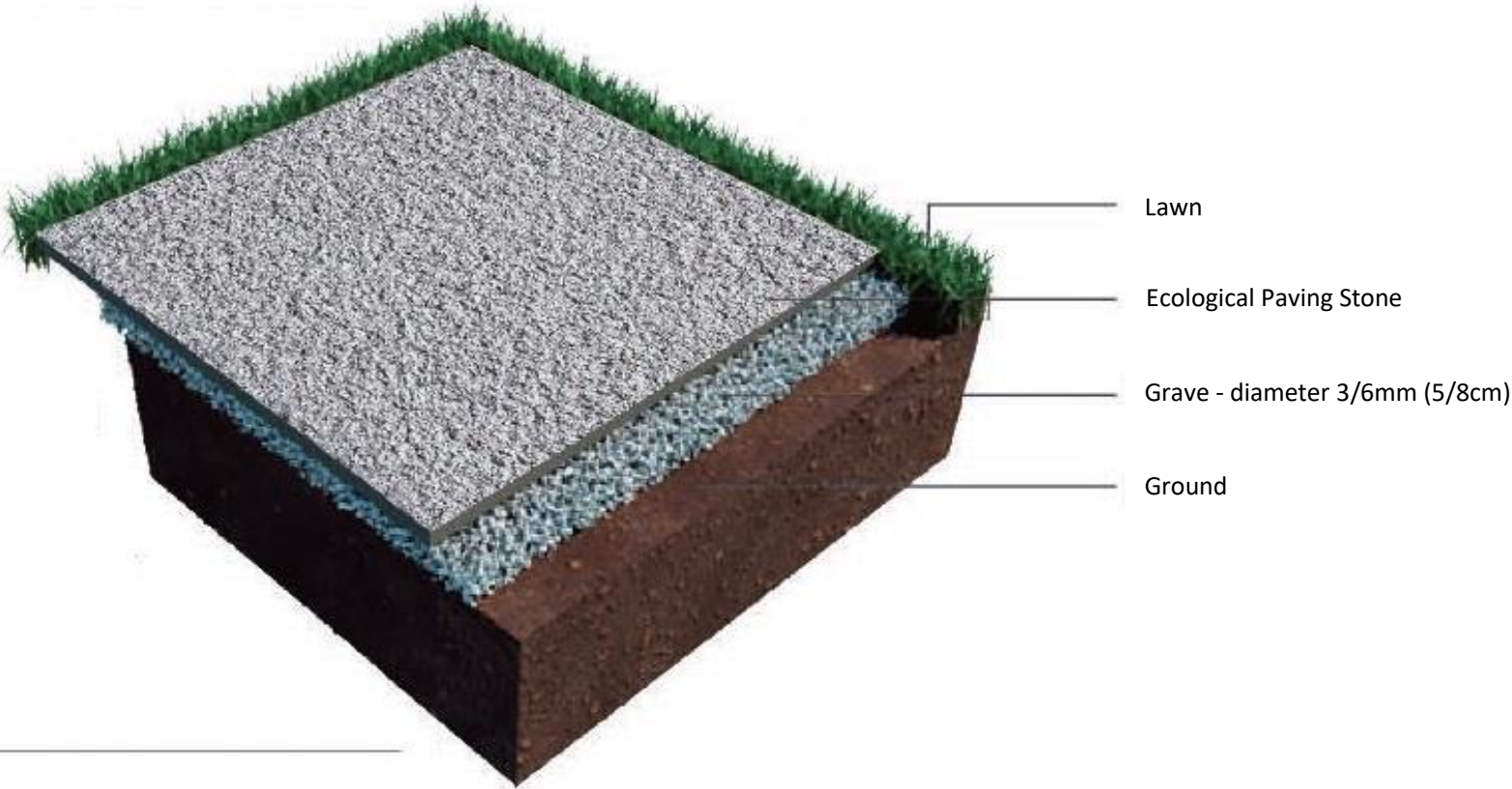




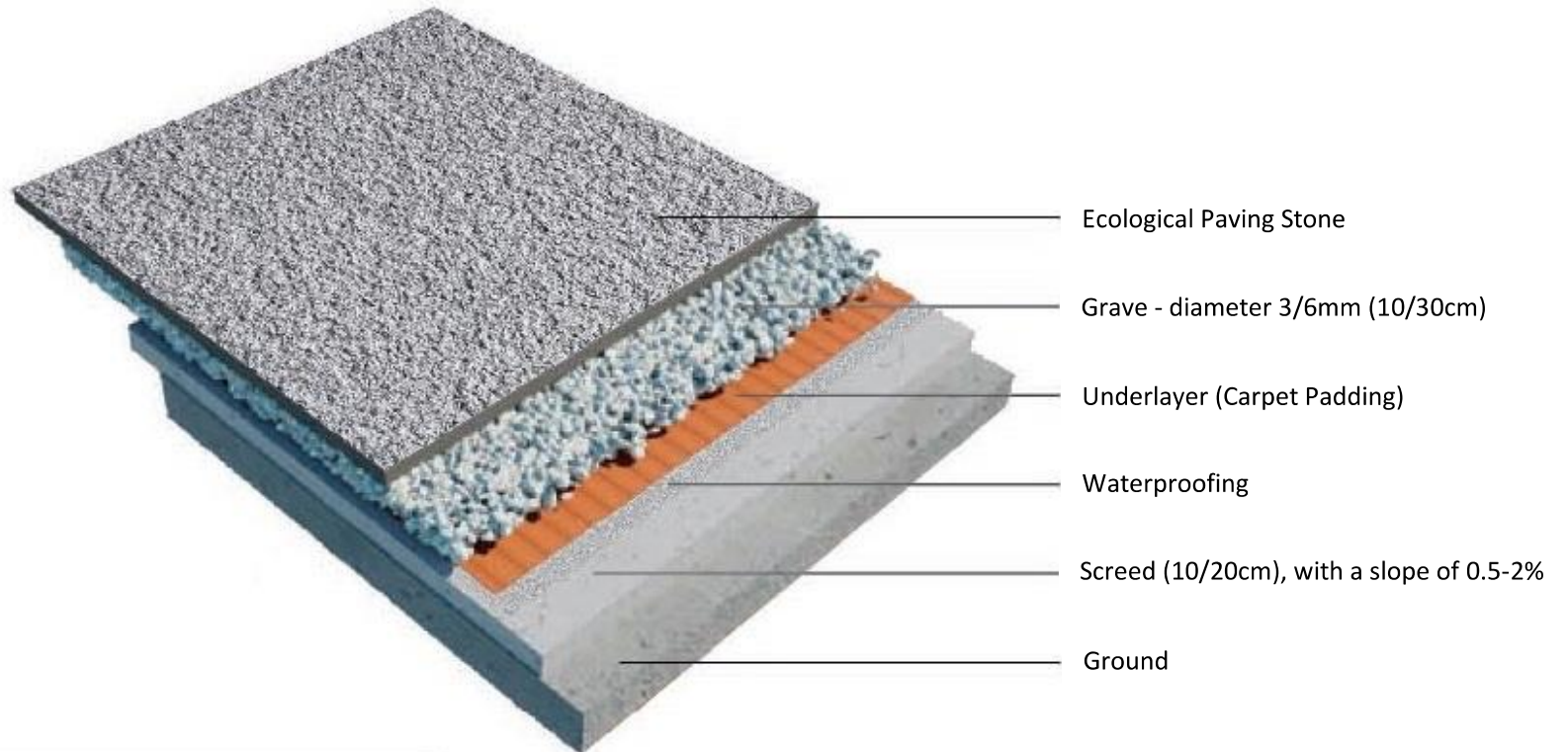


NEOSCAPE
INSTALLATION METHOD

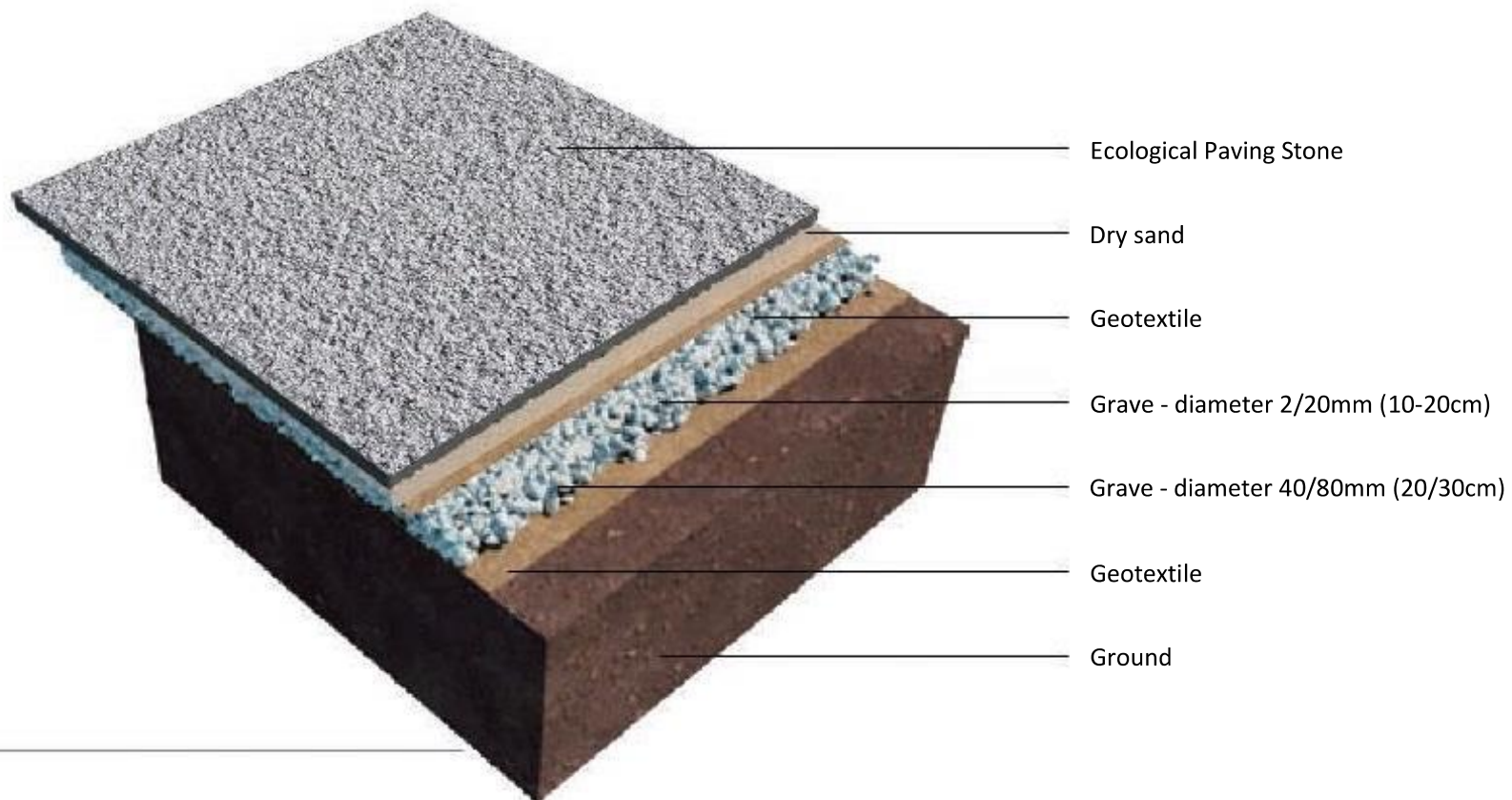
IT'S LAID ON THE LAWN



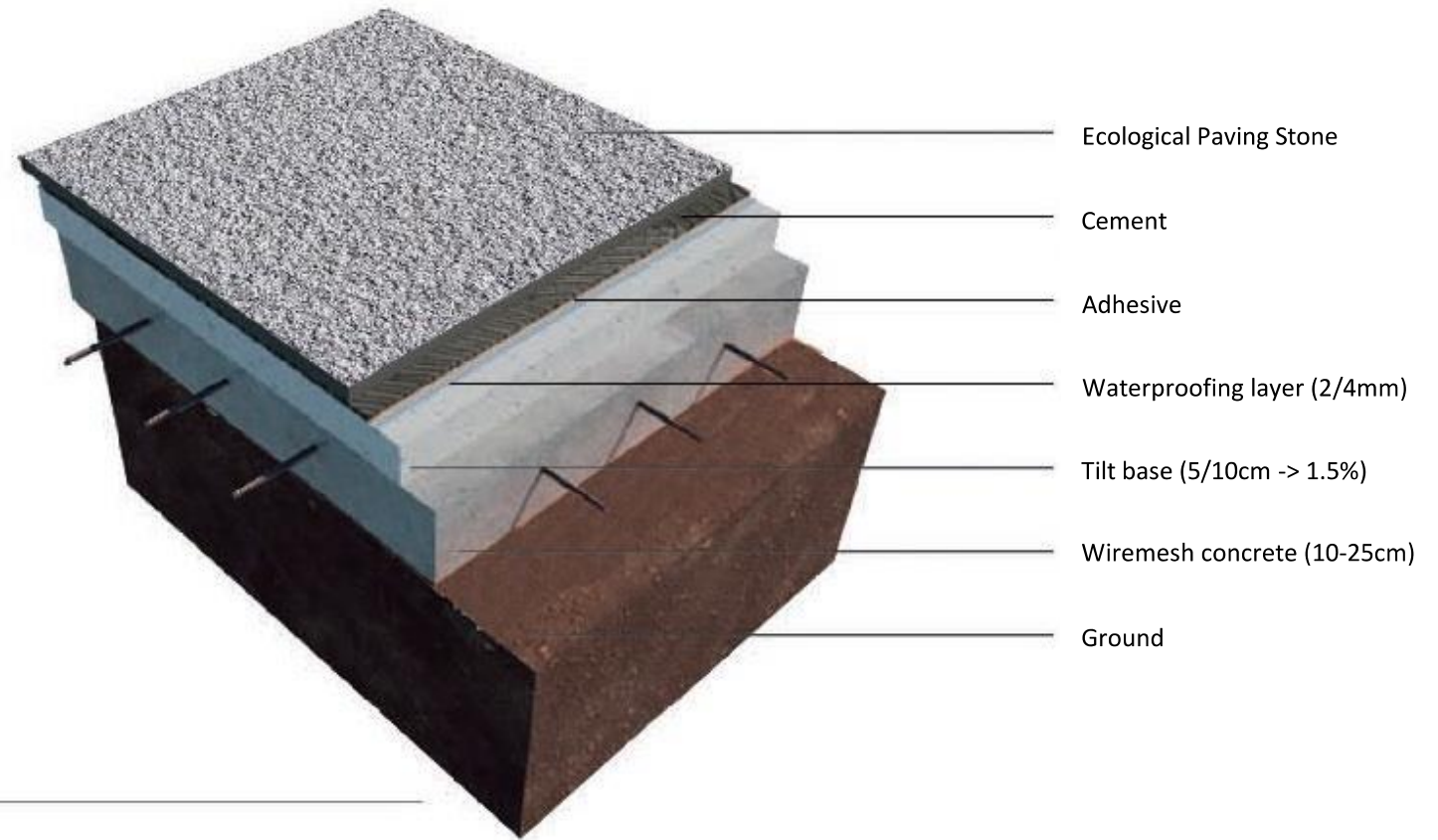
LAYING ON A BURR STONE



LAY ON DRY SAND



IT'S LAID ON CEMENT





CITATAH

Jakarta

Jl. Prof. Dr. Satrio Blok C4 No. 10
Kuningan Timur, Setiabudi,
Jakarta Selatan 12950, Indonesia
P. +62 21 526 2370
P. +62 21 526 2371
WA. +62 877 6583 3437

Bali

Jl. Cargo Permai No. 91
Ubung, Kec. Denpasar Utara,
Kota Denpasar
Bali 80116, Indonesia
P. +62 361 9090 962
WA. +62 877 6583 3437

Karawang Factory

Jl. Tarum Timur No.64
Desa Tamelang, Kecamatan Cikampek,
Karawang 41373, Indonesia
P. +62 264 317 577
F. +62 264 310 808

Pangkep Sulawesi

Kp. Siloro, Desa Mangilu
Kec. Bungoro, Kab. Pangkep
Sulawesi Selatan 90651, Indonesia
WA. +62 877 6583 3437

Contact Us

